

St Dionis House

£950,000

BRIK





St Dionis House

£950,000 LEASEHOLD | 2 Bed FLAT | 1053 SQ FT | 98 SQ M | E COUNCIL TAX | £38,750 STAMP DUTY

An outstanding second floor apartment, in an excellent location with direct views over Parsons Green, Fulham's most desirable area.

This lateral two double bedroom apartment offers over 1,050 sq ft (98 sq m) of internal living space, with plenty of natural light, comprising a superb reception space with an open plan kitchen living area, space for dining, and two Juliette balconies facing 'the Green' itself. There is a large principal bedroom suite, with built in storage and a modern en-suite bathroom, as well as a further double bedroom, shower room, and a separate utility room.

The property has generous proportions, and good ceiling height throughout, which further enhance the feeling of space. The common parts of the building are very well maintained, and there is a secure storage space allocated for the flat on the ground floor.

This property is located on 'The Green' itself making this apartment centrally positioned in the most desirable part of Fulham. The flat is in very close proximity to a range of excellent restaurants, independent cafes, boutique shops and Parsons Green underground station (District Line, Zone 2). There is also a very convenient Waitrose in Parsons Green. You are steps away from the New Kings Road and regular buses into Chelsea and towards Central London. EPC rating: C

Disclaimer: Advertised photos are from before previous tenancy.

- ✓ 2 bedrooms
- ✓ 2 bathrooms
- ✓ Large reception room
- ✓ Open plan kitchen
- ✓ Utility room
- ✓ Great location
- ✓ Excellent views
- ✓ Leasehold
- ✓ Approx 1053 sq ft (98 sq m)
- ✓ Council Tax Band - E



James Sims

DIRECTOR
18 YEARS EXPERIENCE

020 7384 6790

james@brik.co.uk







FULHAM AREA GUIDE

Parsons Green

“Parsons Green” is located right in the heart of Fulham, and refers to the area immediately adjacent to and encircling Parsons Green itself. It has become very much an up-market brand in itself - distinct from Fulham - and normally comes top of the list for people looking to buy.

The roads surrounding the area are lined with pretty Victorian terraced houses (and in some cases flats) and are some of the most desirable and in demand properties Fulham has to offer. The Peterborough Estate, sitting just to the South of the Green, holds some of the most expensive properties in Fulham and has no doubt powered the area into the most recognisably up-market area of Fulham. Indeed (with only a few exceptions) the closer you get to Parsons Green the more you'll be expected to pay.

One of the many reasons Parsons Green is so popular are its brilliant transport links. It has its own underground station (Parsons Green, District Line Zone 2) just North of the green itself.

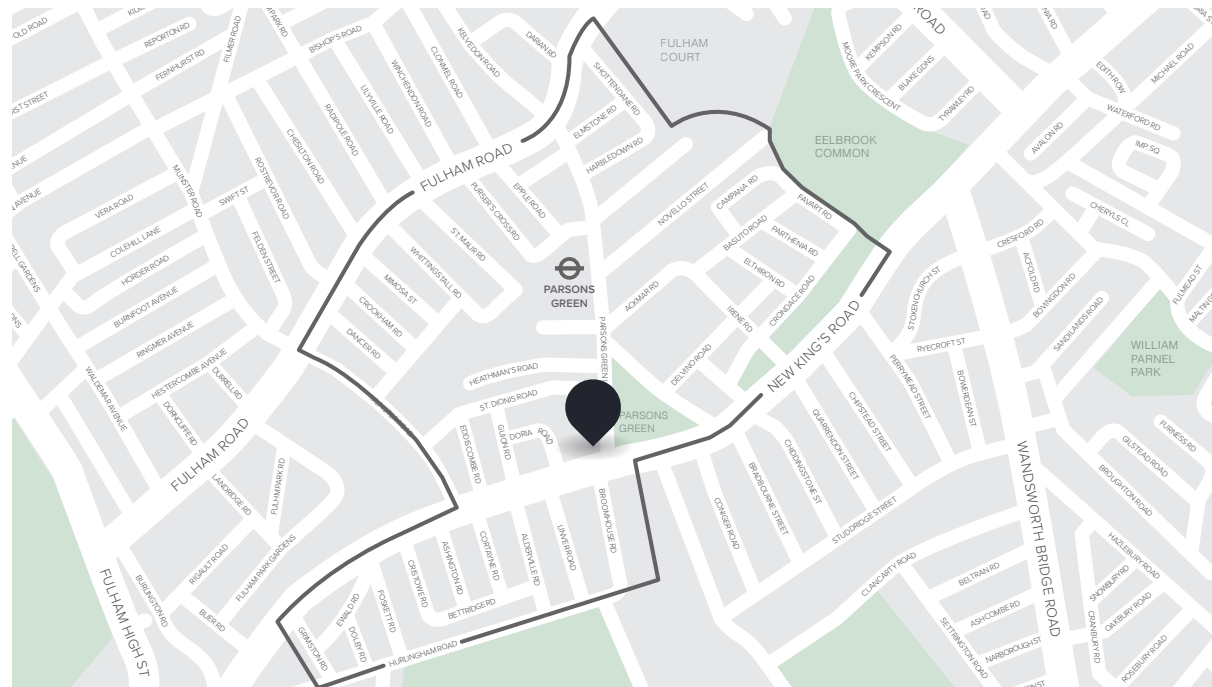
CLOSEST:

- 🚶 Parsons Green (4 mins)
- 🚶 West Brompton (20 mins)
- 🚶 Eel Brook Common (8 mins)

KEY:

- Property location
- ‘Parsons Green’ area of Fulham

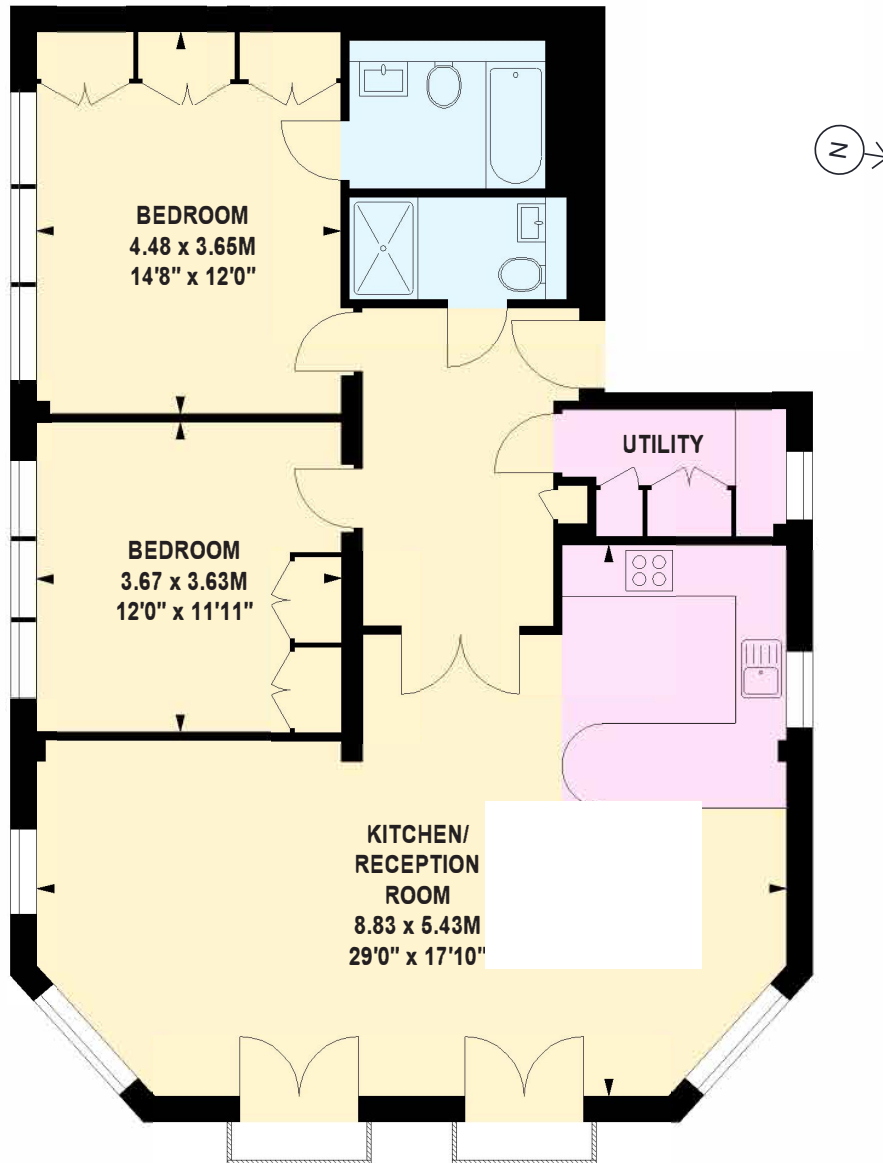
[Read all our Fulham area guides here](#)



BRIK

1053
SQ FT

98
SQ M



Second Floor

Important notice Brik give notice that: all text, photographs and plans on these brochure are for guidance only and are not necessarily comprehensive; any areas, measurements or distances given are approximate; these details do not constitute part of an offer or contract and must not be relied upon as statements or representations of fact; it should not be assumed that the property has all the necessary planning permissions and building regulations approvals; we are not authorised to give any representations or warranties in relation to this property whatsoever; potential purchasers must satisfy themselves as to the correctness of all details by inspection or otherwise. Brik, 77 Parsons Green Lane, Fulham, London SW6 4JA Tel: 020 7384 6790 Email: hello@brik.co.uk