

# 11 BAMBURGH GROVE

LEAMINGTON SPA



# EXECUTIVE FOUR-BEDROOM DETACHED HOME IN A PRESTIGIOUS RESIDENTIAL SETTING

**11 BAMBURGH GROVE,  
LEAMINGTON SPA,  
WARWICKSHIRE, CV32 6RL**

Regarded as one of the most prestigious and premium locations in North Leamington situated just off Northumberland Road, the cul-de-sac of Bamburgh Grove boasts an enviable setting of individual family home. This impressive executive four-bedroom detached home formally five bed roomed which could be converted back, offers spacious accommodation perfectly suited to modern family living, combining style, practicality and an excellent location, the property presents a superb opportunity for buyers seeking a long-term, aspirational home.







The property enjoys a commanding and secluded position with attractive kerb appeal and a well-maintained frontage that immediately conveys a sense of quality. Internally, the home is thoughtfully designed to provide a balance of formal and informal living spaces, ideal for both entertaining guests and day-to-day family life.

An entrance porch with guest cloakroom leads to a welcoming entrance hallway extending to a generous reception area, which includes a comfortable living room with adjoining conservatory, complemented

by an additional reception room that can serve as a dining room, family room/snug/TV room or home office/study. The layout provides flexibility and flow, making the home highly adaptable to modern lifestyles. At the heart of the property is a well-appointed kitchen, offering ample storage units with integrated appliances, extensive work surfacing with potential for open-plan living with dining area and adjoining utility room. The space is perfectly suited to family gatherings and everyday use, with convenient access to the garden.



Upstairs, the property boasts four well-proportioned bedrooms, including a spacious principal bedroom with en-suite facilities and an extensive range of tailored bedroom furniture. The remaining bedrooms provide excellent accommodation for family members which includes a guest bedroom with en-suite and two additional bedrooms, all supported by a contemporary family bathroom.

Externally, the home benefits from a private rear garden, offering an ideal environment for relaxation,

entertaining and family activities with patio area and recessed pergola with small terrace. The outdoor space combines privacy and practicality, while a driveway offers ample parking and double garaging provision add to the property's overall appeal.

Located in the sought-after town of Leamington Spa, the property is ideally positioned to take advantage of a wide range of amenities, including boutique shops, restaurants and coffee houses, excellent Ofsted schooling and superb transport links which includes



the M40 corridor and national railway station both offering access to London and Birmingham centres of commerce. The area is particularly popular with professionals and families due to its vibrant atmosphere and connectivity to Historic Warwick, Kenilworth and beyond.

This outstanding property represents a rare opportunity to secure an executive detached home in a prime location, combining space, versatility and long-term value.

## KEY FEATURES

Executive **four-bedroom detached family home**

Located in a **highly desirable Leamington Spa postcode**

Positioned within a quiet and **prestigious residential development**

Spacious and well-balanced **internal accommodation**

Ideal for **family living and entertaining**

Multiple reception rooms **offering flexibility**

Welcoming entrance hall with **porch & Guest Cloakroom**

Generous living room with **excellent natural light**

Versatile **second reception room (dining/family/office)**

Well-appointed kitchen with **scope for modernisation or open-plan design**

Four **well-proportioned bedrooms with en-suite & Family bathroom**

Principal **bedroom with en-suite**

Private and **enclosed rear garden**

Driveway and Double garage providing **ample parking**

Conservatory

Close to **highly regarded local schools**

Excellent **access to Leamington Spa town centre**

Convenient links to **Warwick, Coventry and major road networks**

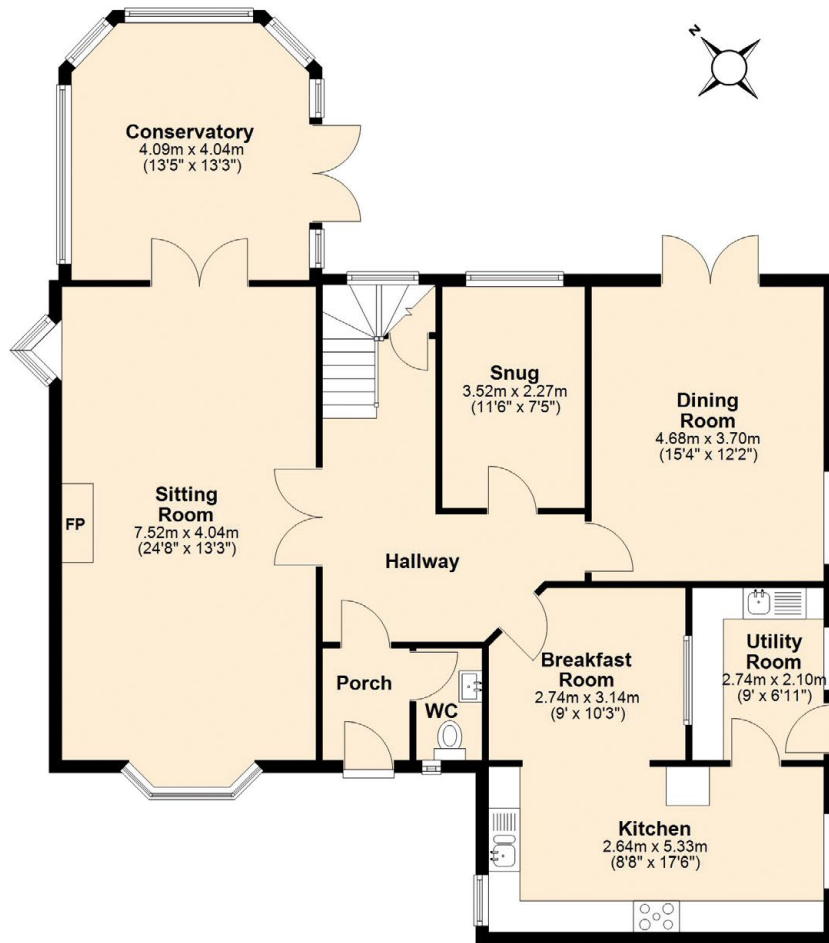
Sought-after location **appealing to professionals and families**

Benefiting from **'No Chain'**

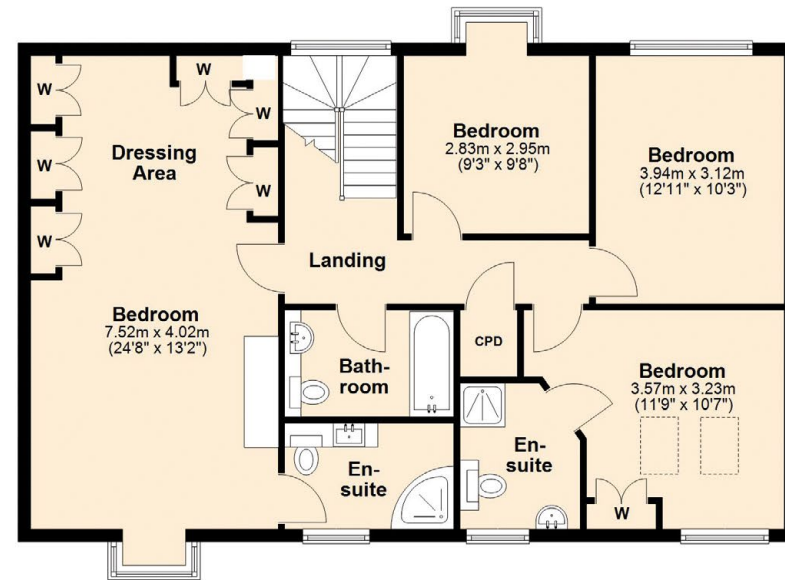


# FLOOR PLANS & DIMENSIONS

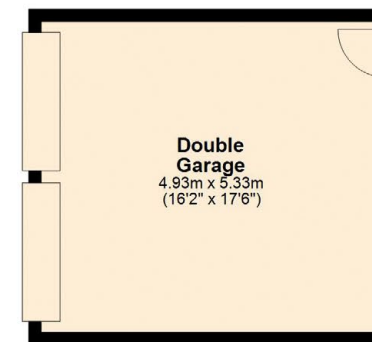
GROUND FLOOR



FIRST FLOOR



DOUBLE GARAGE



Total Area: 238.4 sq. metres. (2566.2 sq. feet)

Illustration only and not to scale.

## Handles Property

8A Regent Street,  
Leamington Spa,  
CV32 5HQ

**01926 354 400**

### DISCLAIMER

These particulars are for illustration only. We operate a policy of continuous improvement and individual features such as kitchen and bathroom layouts, doors, windows and elevational treatments may vary from time to time. Specification details are for guidance purposes only and remain subject to change without prior notice. Should a replacement be required this will be to an equal or higher standard. Consequently these particulars should be treated as general guidance only and cannot be relied upon as accurately describing any of the specified matters prescribed by any order under the Consumer Protection from Unfair Trading Regulations 2008 (CPR) and the Business Protection for Misleading Marketing Regulations 2008. Nor do they constitute a contract, part of a contract or a warranty. Computer generated images are indicative only and may be subject to change.

*Your local  
independent  
estate agents*

rightmove 

ZOOPLA

OnTheMarket

PrimeLocation.com



**HANDLES**  
PROPERTY

LOCATION

### CV32 6RL

Score	Energy rating	Current	Potential
92+	A		
81-91	B		
69-80	C	72 C	77 C
55-68	D		
39-54	E		
21-38	F		
1-20	G		



[www.handlesproperty.co.uk](http://www.handlesproperty.co.uk)