



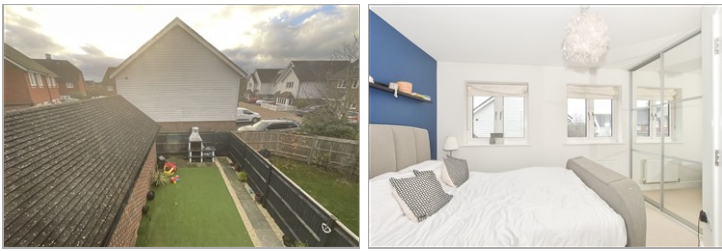
**Price**  
**£396,995**

**Freehold**

2x  2x  1x 

**White Close, Horley,  
Surrey, RH6**

**cubitt & west**  
Helping you move forwards



## Main features

- Complete chain
- Garage & driveway parking
- Open plan kitchen/lounge/diner
- En-suite to primary bedroom
- Close to parks, schools & transport links

## Accommodation

### GROUND FLOOR

Entrance Hallway: 10'2 x 3'6 (3.10m x 1.07m)

Cloakroom: 6'5 x 3'0 (1.96m x 0.92m)

Lounge / Diner: 16'5 x 13'8 (5.01m x 4.17m)

Kitchen: 10'9 x 6'5 (3.28m x 1.96m)

### FIRST FLOOR

Landing

Bedroom 1: 13'9 x 9'7 (4.19m x 2.92m)

En Suite Shower Room: 6'5 x 6'5 (1.96m x 1.96m)

Bedroom 2: 13'9 x 8'0 (4.19m x 2.44m)

Family Bathroom: 6'5 x 6'4 (1.96m x 1.93m)

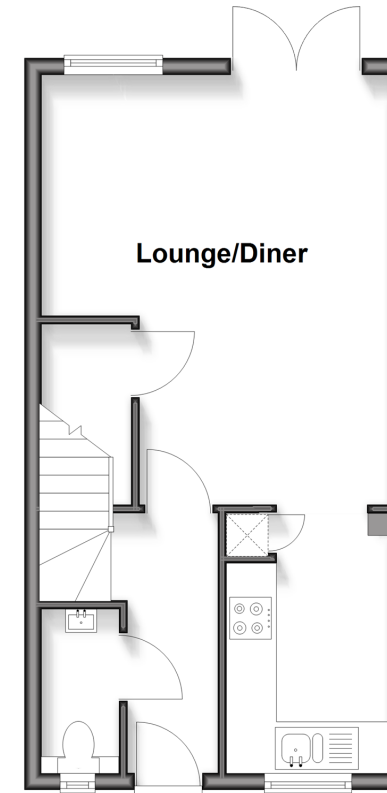
### OUTSIDE

Front & Rear Gardens

Garage

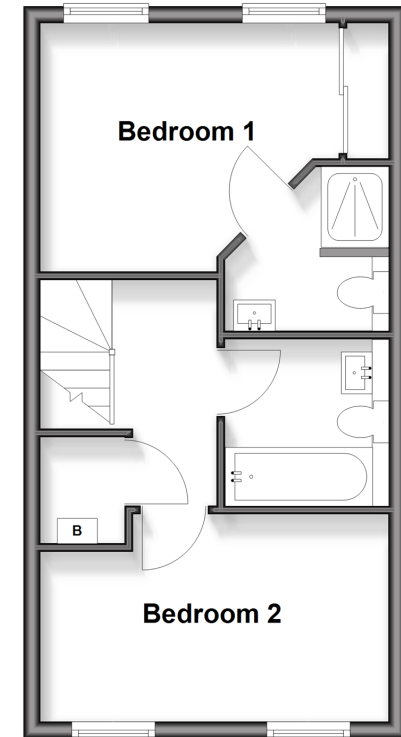
### Ground Floor

Approx. 34.9 sq. metres (375.4 sq. feet)



### First Floor

Approx. 34.9 sq. metres (375.4 sq. feet)



**Call Horley - 01293 785338 ■ [cubittandwest.co.uk](http://cubittandwest.co.uk)**

- Legal advice should be taken to verify fixtures/fittings, planning, alterations and/or lease details
- Appliances & services are untested, dimensions are approximate and floor plans are not to scale



20811321/20260130/TP/SI