

Kingston Lane

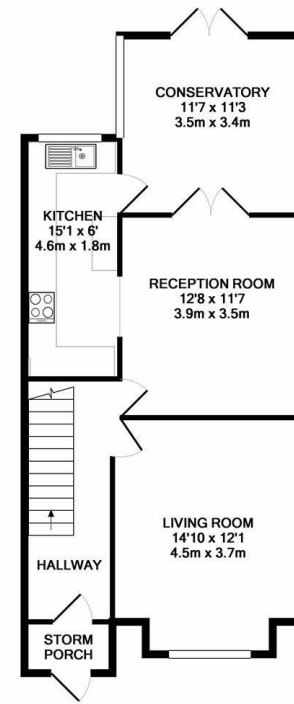
Uxbridge • Middlesex • UB8 3PN

PCM: £2,200 PCM

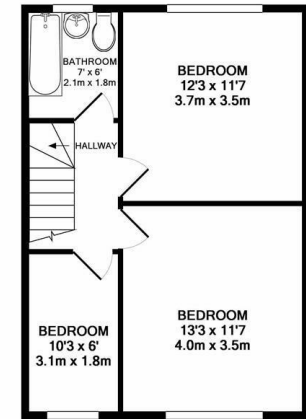


coopers
est 1986

Superb FOUR BEDROOM STUDENT HOUSE located virtually opposite Brunel University. This excellent property comprises of: Four bedrooms, lounge, kitchen, conservatory, bathroom, rear garden, off street parking for four cars, gas central heating and double glazing. Providing excellent student accommodation with an unrivalled location for Brunel and Uxbridge Town Centre. FURNISHED



GROUND FLOOR
APPROX. FLOOR
AREA 642 SQ.FT.
(59.6 SQ.M.)



1ST FLOOR
APPROX. FLOOR
AREA 448 SQ.FT.
(41.7 SQ.M.)

TOTAL APPROX. FLOOR AREA 1090 SQ.FT. (101.3 SQ.M.)
Whilst every attempt has been made to ensure the accuracy of the floor plan contained here, measurements of doors, windows, rooms and any other items are approximate and no responsibility is taken for any error, omission, or mis-statement. This plan is for illustrative purposes only and should be used as such by any prospective purchaser. The services, systems and appliances shown have not been tested and no guarantee as to their operability or efficiency can be given
Made with Metropix ©2019

- Four bedroom
- Perfect for student/sharers
- Driveway parking for 4 cars
- Nex to Brunel University
- Two reception rooms
- Easy access to Uxbridge tow centre
- Great local amenities
- Great transport links
- Fully furnished
- Private rear garden

Available Date

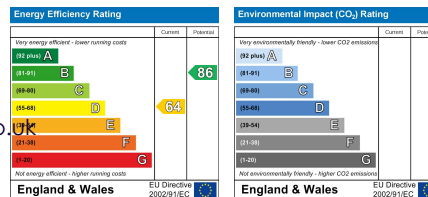
15th August 2026



01895 230 103

109 Hillingdon Hill, Hillingdon Village,
Middlesex, UB10 0JQ
propertymanagement@coopersresidential.co.uk

CoopersResidential.co.uk



Important Notice: These particulars, whilst believed to be accurate are set out as a general outline only for guidance and do not constitute any part of an offer or contract. Intending purchasers should not rely on them as statements or representation of fact, but must satisfy themselves by inspection or otherwise has the authority to make or give any representation or warranty in respect of the property.

