



St. Pauls Close, TW3

£799,950

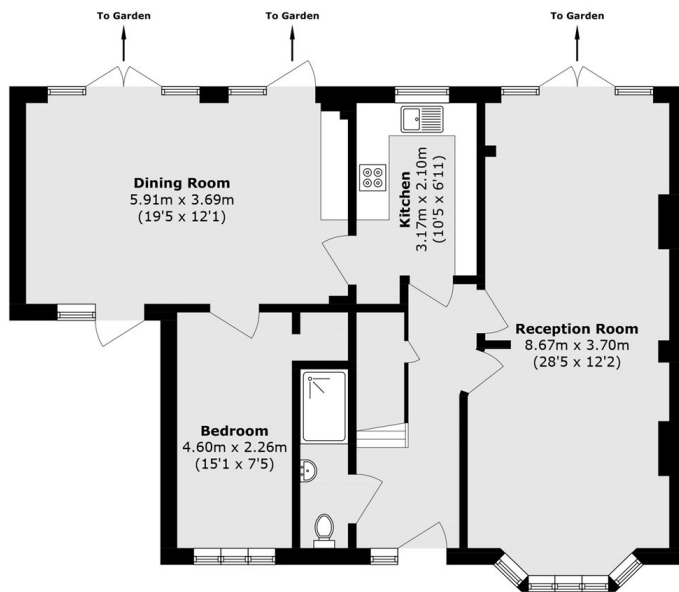
A Semi Detached family home, in great condition with benefits that include a large manicured private rear garden, driveway for multiple cars and side extended to create over 1,600 sq ft of living space. The property also benefits from the opportunity to further extend (STPP).

St. Pauls Close is a quiet residential cul-de-sac, it is a short walk to the Piccadilly line and has great road links to and from Central London.

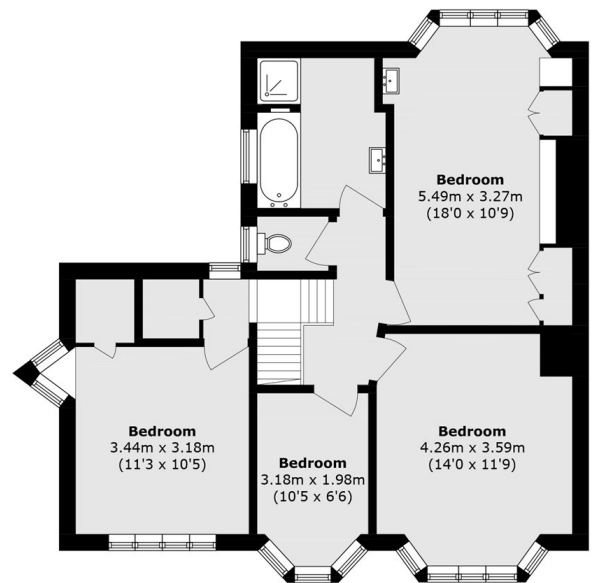
Features

- Driveway for Multiple Cars
- Large Garden
- Semi Detached
- Lovely Condition
- Quiet Cul-De-Sac
- Scope to Further Extend

St. Pauls Close, Hounslow, TW3



Ground Floor



First Floor

Total area (approx.): 154.5 sq. m (1663.0 sq. ft)