



Main Street
Horsley Woodhouse Ilkeston

burchell
edwards

Main Street Horsley Woodhouse Ilkeston DE7 6AT

for sale
£110,000



Property Description

Offered for sale with NO UPWARD CHAIN is this quaint one bedroom cottage nestled away down a private driveway in the popular village of Horsley Woodhouse. In brief the property comprises; lounge, kitchen, one bedroom and a bathroom to the first floor. Outside there is a shared garden to the rear being mainly laid to lawn with two brick outbuildings, while to the front there is a small driveway. Viewings are strongly recommended.

Lounge

Having UPVC double glazed window to the front elevation, UPVC double glazed door to the front elevation, a radiator, vinyl flooring, exposed beams, stairs off to the first floor, tiled hearth and door opening to the kitchen.

Kitchen

Having UPVC double glazed window to the rear elevation, UPVC double glazed door to the rear, boiler, space for fridge freezer, base units with work surface over, one and a half bowl sink and drainer unit, four ring electric hob, electric oven, vinyl flooring, a radiator and stainless steel extractor.

First Floor Landing

Having UPVC double glazed window to the rear, door off leading to the bedrooms and bathroom.

Bedroom One

Having UPVC double glazed window to the front elevation and a radiator.

Bathroom

Having a bath with mixer tap over, low level W.C, pedestal wash hand basin, tiled splashbacks, UPVC double glazed obscured window to the rear elevation, airing cupboard and loft access

Outside

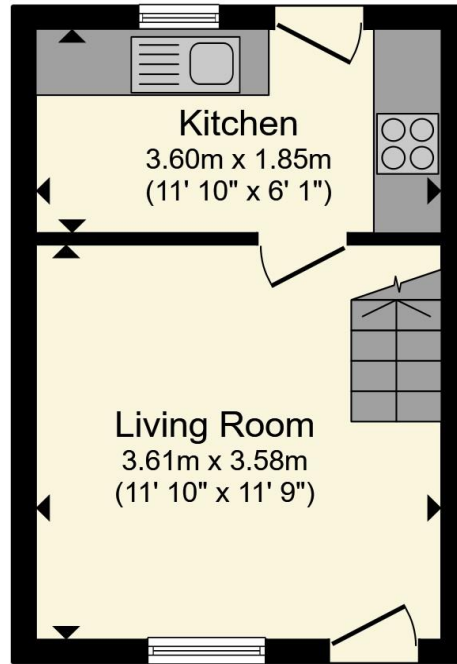
To the front of the property is a low maintenance frontage with shared gated side access leading to a shared rear courtyard with a brick built outbuilding and outside power points.



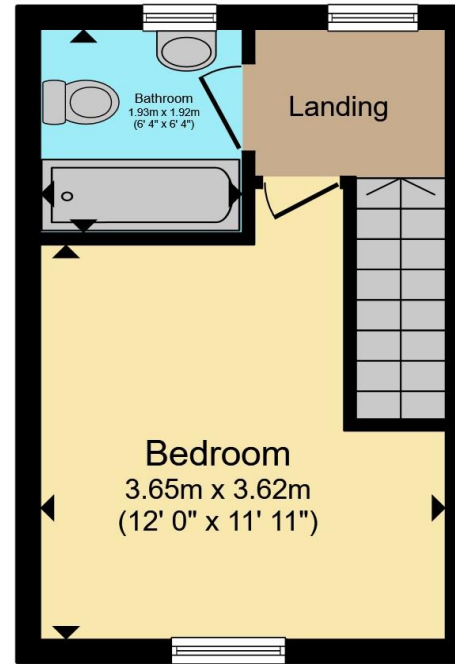








Ground Floor



First Floor

Total floor area 39.8 m² (429 sq.ft.) approx

This floor plan is for illustrative purposes only. It is not drawn to scale. Any measurements, floor areas (including any total floor area), openings and orientation are approximate. No details are guaranteed, they cannot be relied upon for any purpose and they do not form part of any agreement. No liability is taken for any error, omission or misstatement. A party must rely upon its own inspection(s). Powered by www.propertybox.io



To view this property please contact Burchell Edwards on

T 01773 822622
E belper@burchelledwards.co.uk

1-3 Bridge Street
 BELPER DE56 1AY

EPC Rating: D Council Tax
 Band: A

Tenure: Freehold

check out more properties at burchelledwards.co.uk



1. MONEY LAUNDERING REGULATIONS Intending purchasers will be asked to produce identification documentation at a later stage and we would ask for your co-operation in order that there will be no delay in agreeing the sale. 2. These particulars do not constitute part or all of an offer or contract. 3. The measurements indicated are supplied for guidance only and as such must be considered incorrect. Potential buyers are advised to recheck measurements before committing to any expense. 4. We have not tested any apparatus, equipment, fixtures, fittings or services and it is in the buyers interest to check the working condition of any appliances.

Burchell Edwards is a trading name of Connells Residential which is registered in England and Wales under company number 1489613, Registered Office is Cumbria House, 16-20 Hockliffe Street, Leighton Buzzard, Bedfordshire, LU7 1GN. VAT Registration Number is 500 2481 05.

See all our properties at www.burchelledwards.co.uk | www.rightmove.co.uk | www.zoopla.co.uk

Property Ref: BEL207005 - 0002