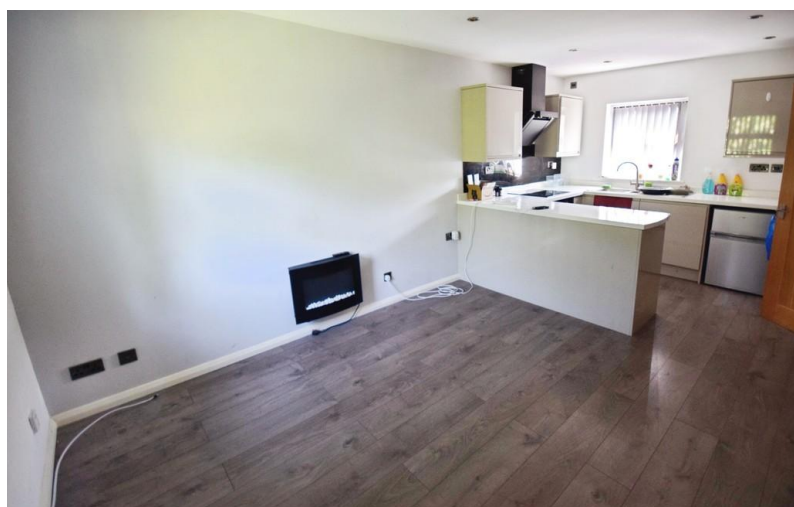


TO LET



Maryfield Walk, Penkhull

1 Bedroom, 1 Bathroom, Apartment

£685 pcm

MARTIN&CO



Maryfield Walk, Penkhull

1 Bedroom, 1 Bathroom

£685 pcm

FIRST FLOOR FLAT. Martin and co are pleased to offer for rent this 1 bedroom first floor flat located in a sought after location within walking distance from the hospital and local shops in Penkhull. The property has the benefit of a private front door with landing area and inner door to an entrance hall with doors to an open plan lounge kitchen area, double bedroom and bathroom. Outside there is allocated parking.

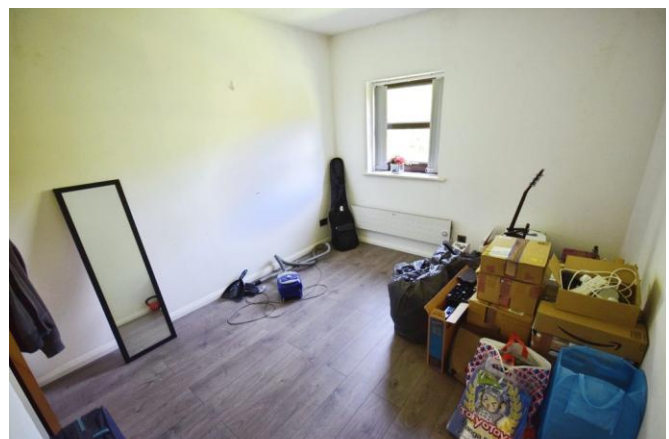
Date available: Available Now

Deposit: £790

Unfurnished

Council Tax band: A

- Walking Distance to Royal Stoke Hospital
- 1st Floor Flat
- Lounge
- Kitchen
- Double Bedroom
- Bathroom
- Allocated Parking





Score	Energy rating	Current	Potential
92+	A		
81-91	B		
69-80	C	77 C	80 C
55-68	D		
39-54	E		
21-38	F		



Martin & Co Stoke on Trent

12 Albion Street • Stoke-On-Trent • ST1 1QH

T: 01782 262880 • E: stokeontrent@martinco.com <http://www.martinco.com>

01782 262880



Accuracy: References to the Tenure of a Property are based on information supplied by the Seller. The Agent has not had sight of the title documents. A Buyer is advised to obtain verification from their Solicitor. Items shown in photographs including but not limited to carpets, fixtures and fittings are not included unless specifically mentioned within the sales particulars. They may however be available by separate negotiation. Buyers must check the availability of any property and make an appointment to view before embarking on any journey to see a property. No person in the employment of the agent has any authority to make any representation about the property, and accordingly any information given is entirely without responsibility on the part of the agents, sellers(s) or lessors(s). Any property particulars are not an offer or contract, nor for part of one. **Sonic / laser Tape:** Measurements taken using a sonic / laser tape measure may be subject to a small margin of error. **All Measurements:** All Measurements are Approximate. **Services Not tested:** The Agent has not tested any apparatus, equipment, fixtures and fittings or services and so cannot verify that they are in working order or fit for the purpose. A Buyer is advised to obtain verification from their Solicitor or Surveyor.