



Montefiore Street, SW8

£3,750 Per calendar month

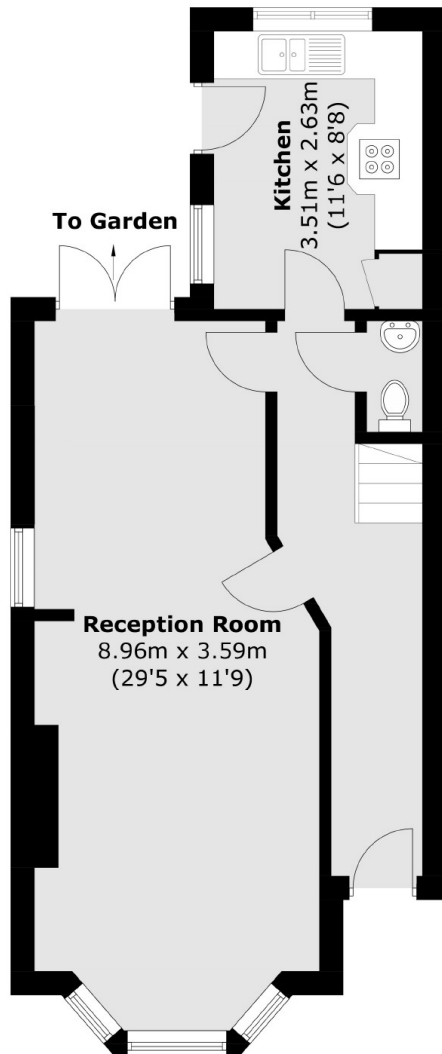
A gorgeous three bedroom, two bathroom house located in Battersea, offering a double reception room, a separate eat-in kitchen and a private garden. This is the perfect home for a family or professional sharers.

Montefiore Street is located in the popular Diamond Conservation area. The area is renowned for its uniform attractive Victorian houses and is close to Nine Elms and Battersea Power Station and between the green open spaces of Clapham Common and Battersea Park.

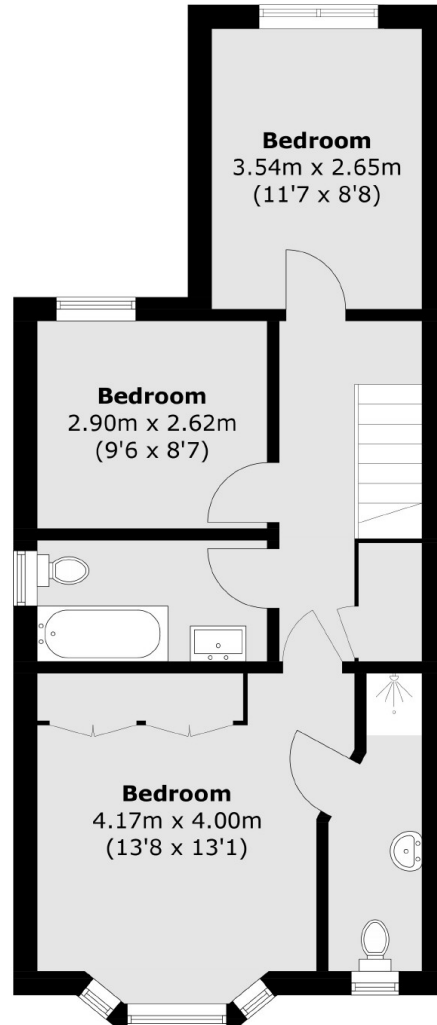
Features

- Three Bedrooms
- Two Bathrooms
- Eat-In Kitchen
- Double Reception Room
- Private Garden
- Prime Location

Montefiore Street, London, SW8



Ground Floor



First Floor

Total area (approx.): 100.5 sq. m (1,081.7 sq. ft)