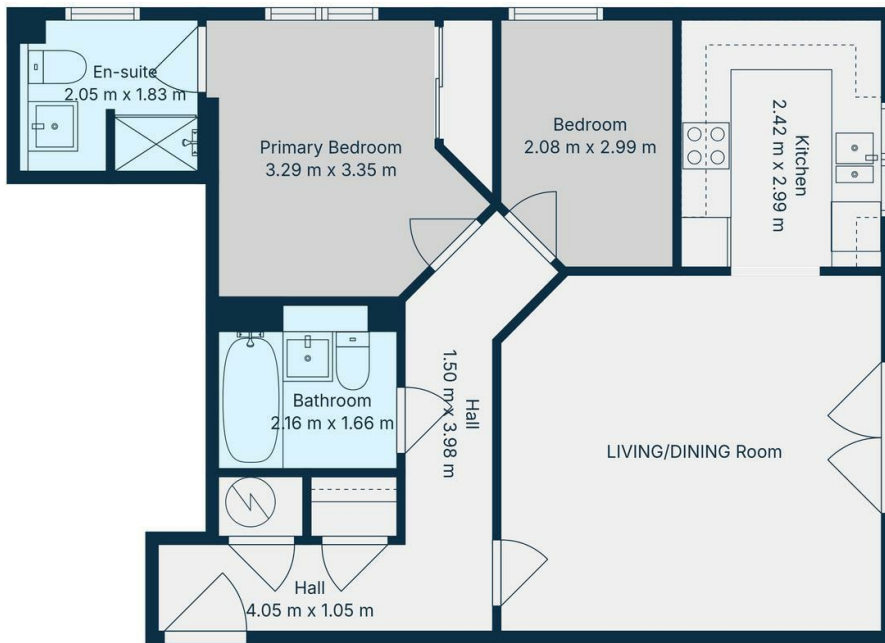


4 Tatler Close, Warwick  
Guide Price £220,000

charlesrose.



**TOTAL: 65 m2**  
Ground floor: 65 m2  
EXCLUDED AREAS: WALLS: 5 m2

Floor Plan Created By Cubicasa App. Measurements Deemed Highly Reliable But Not Guaranteed.



An immaculately presented apartment set within a sought-after riverside development. The property offers a bright open-plan living space with a Juliet balcony. The principal bedroom benefits from an en-suite shower room, complemented by a second double bedroom and a further modern bathroom. Additional features include a communal lift, an allocated parking space, and the advantage of no onward chain. Ideally situated for both Leamington Spa and Warwick, this property represents a fantastic first-time buy or investment opportunity.

charlesrose.

- 01926 832411
- hello@charlesrose.co.uk
- charlesrose.co.uk

