

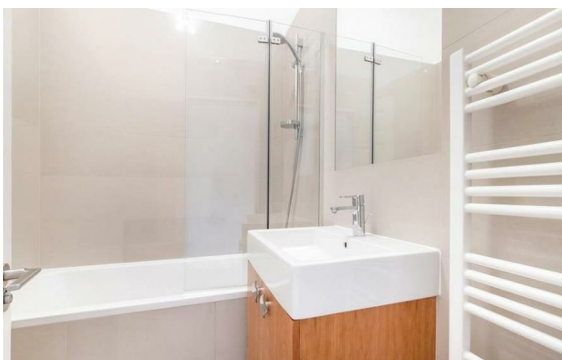


Gloucester Place, Marylebone, London, NW1

Rent £850 PCM

2 Bed | 2 Bath | 1 Reception

Please call us on 020 7724 2233 or email us info@newingtonstates.com to book a viewing.



60 Upper Montagu Street

London

W1H 1SN

020 7724 2233

info@newingtonestates.com

A beautifully presented two-bedroom apartment offering bright interiors and modern finishes in a sought-after Marylebone location. The property features a spacious reception and dining room, a fully fitted kitchen with integrated appliances, and two double bedrooms. The principal bathroom includes a shower over the bath, while the second bedroom benefits from an en-suite shower room. Wooden flooring, high ceilings, and neutral décor enhance the bright and contemporary feel throughout.

Residents benefit from lift access and porter service. Ideally located opposite Regent's Park and close to Baker Street Station, with excellent transport links and a wide range of local amenities nearby.

EPC Rating: D

Energy Efficiency Rating: D

Agents Note: Whilst every care has been taken to prepare these particulars, they are for guidance purposes only. All measurements are approximate and are for general guidance purposes only and whilst every care has been taken to ensure their accuracy, they should not be relied upon and potential buyers/tenants are advised to recheck the measurements.

<http://www.newingtonestates.com>