

FREEHOLD



House - Detached (EPC Rating: D)

2 BOWLING STREET, COATBRIDGE, ML5 1PP

Offers over

£620,000



4 Bedroom House - Detached located in Coatbridge

Caroline Morrison of Sweet Home Scotland presents this truly exceptional sandstone detached villa, situated within one of Blairhill's most prestigious and sought-after addresses. Beautifully combining timeless character with modern family living, this substantial home offers impressive and versatile accommodation throughout.

Upon entering, you are welcomed by a stunning entrance hallway featuring an elegant staircase and beautiful period charm. The ground floor comprises a generous formal lounge, downstairs WC and a spacious double bedroom complete with fitted wardrobes and its own en-suite bathroom.

To the rear of the property lies the impressive kitchen diner, perfectly designed for modern family living and entertaining, with access to the rear garden.

The upper level boasts an outstanding master suite featuring a walk-in wardrobe and luxurious four-piece en-suite bathroom complete with a freestanding bath and walk-in shower. Two further double bedrooms also benefit from their own en-suite facilities, offering comfort and privacy throughout.

Externally, the property enjoys a private rear garden alongside a fantastic self-contained studio annex, ideal for guest accommodation, a home office, salon or creative workspace. The annex offers an open-plan living, kitchen and bedroom area along with an en-suite shower room.

Further benefits include gated access to both sides of the property, a substantial private driveway and foundations already laid for a future double garage.



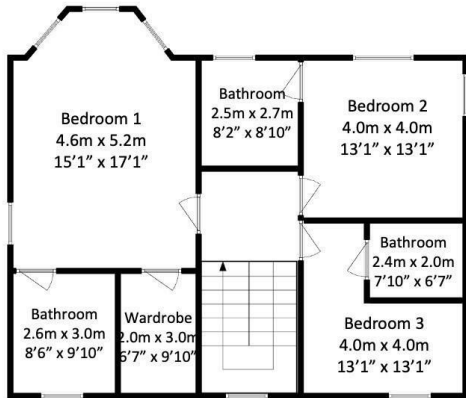
COATBRIDGE | C/O 1 MAIN ST, COATBRIDGE, NORTH LANARKSHIRE, ML5 3AJ



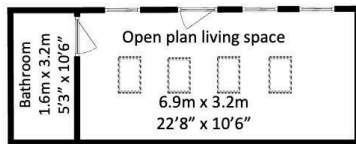
COATBRIDGE | C/O 1 MAIN ST, COATBRIDGE, NORTH LANARKSHIRE, ML5 3AJ



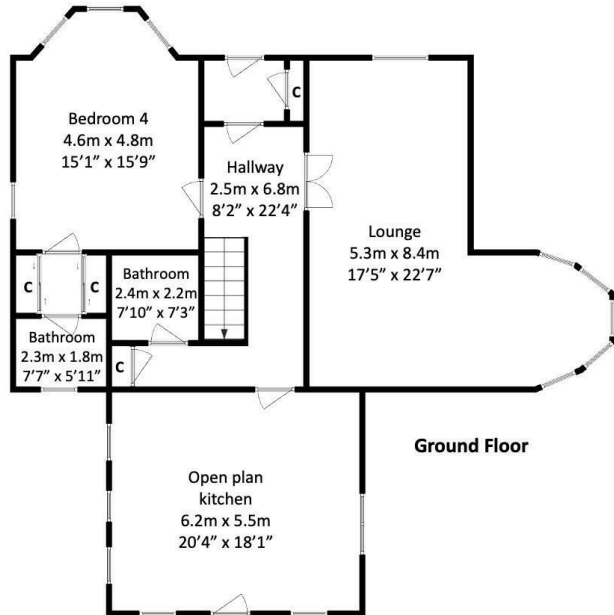
COATBRIDGE | C/O 1 MAIN ST, COATBRIDGE, NORTH LANARKSHIRE, ML5 3AJ



First Floor



Annex building

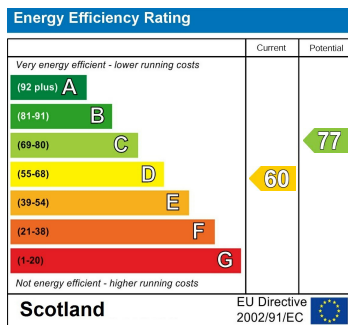


Ground Floor

Council Tax Band

G

Energy Performance Graph



Call us on

01236 677500

sales@sweet-home.co.uk

<https://sweet-home.co.uk/>

Agents Note: Whilst every care has been taken to prepare these particulars, they are for guidance purposes only. All measurements are approximate and are for general guidance purposes only and whilst every care has been taken to ensure their accuracy, they should not be relied upon and potential buyers are advised to recheck the measurements.

SWEET HOME

