



72 Ranwell Close Beale Road, London

London

Guide Price £400,000



## 72 Ranwell Close Beale Road

London

Guide Price - £400,000 to £425,000 Beautifully presented 2-bed flat in Bow near Victoria Park. Modern finish, open plan living, close to amenities and transport. Ideal for first-time buyers.

- Two Bed Flat
- Two Minutes Walk To Victoria Park
- Close To Amenities On Roman Road
- Turn Key Condition
- Recently Decorated Throughout with Good Spec
- Lift Access
- Permit Parking
- Heart Of Bow



Guide Price - £400,000 to £425,000

This beautifully presented two bedroom flat is situated in the heart of Bow, just a two minute walk from the vibrant green spaces of Victoria Park and close to an excellent range of amenities on Roman Road. Offered in turn key condition, the property has been recently decorated throughout to a high specification, creating a modern and inviting living space. The flat comprises a spacious and light-filled open plan living area, a sleek contemporary kitchen with integrated appliances, two generously sized bedrooms, and a stylish modern bathroom. The property benefits from lift access, making it easily accessible, and permit parking is available for residents (subject to application). With its prime location, high quality finish, and excellent transport links nearby, this flat offers an ideal opportunity for first-time buyers, professionals, or investors looking for a move-in ready home in one of East London's most sought-after areas. Early viewing is highly recommended to appreciate the quality and convenience this superb flat has to offer.

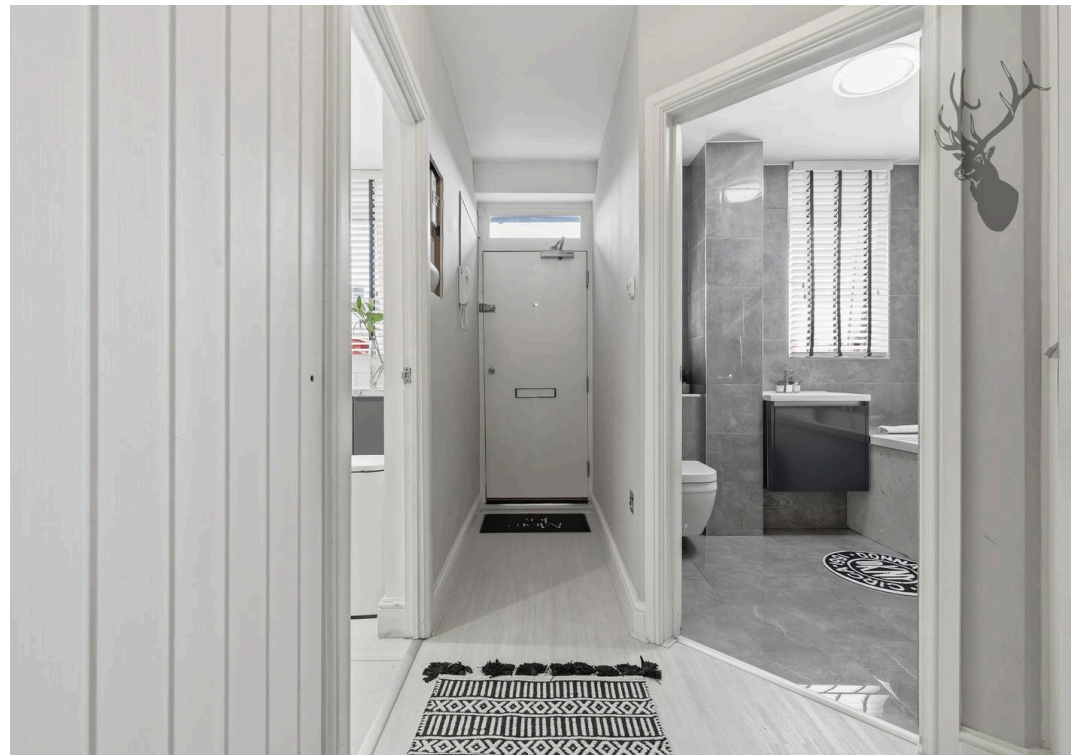
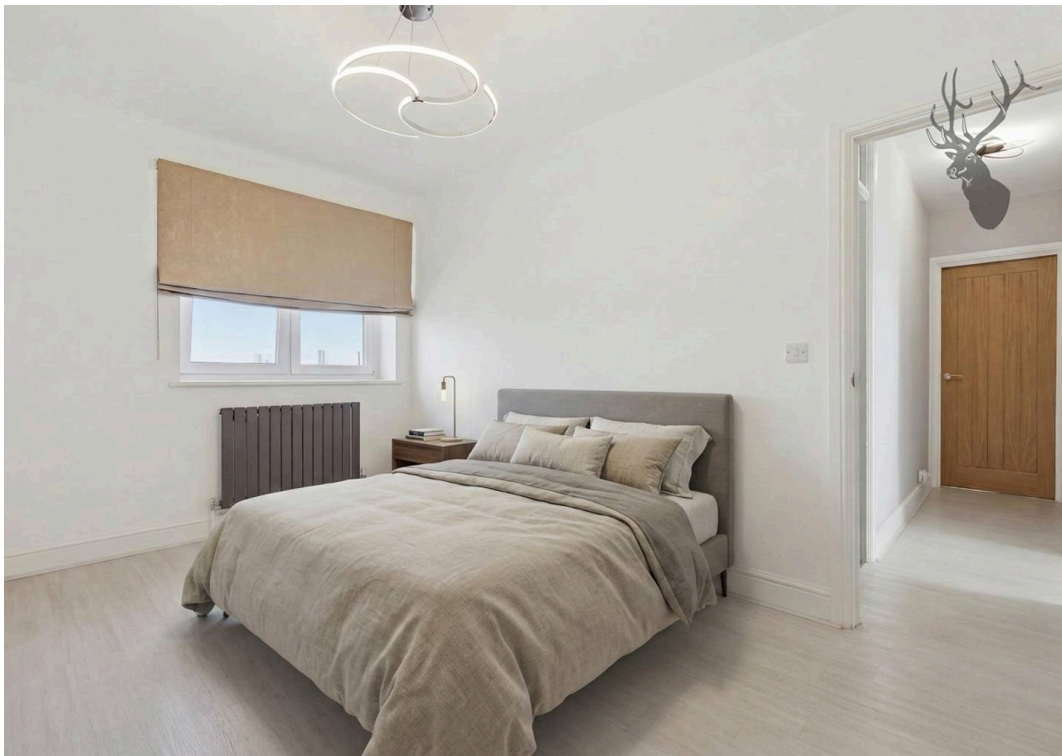
Council Tax band: C

Tenure: Leasehold

EPC Energy Efficiency Rating: C

EPC Environmental Impact Rating: C





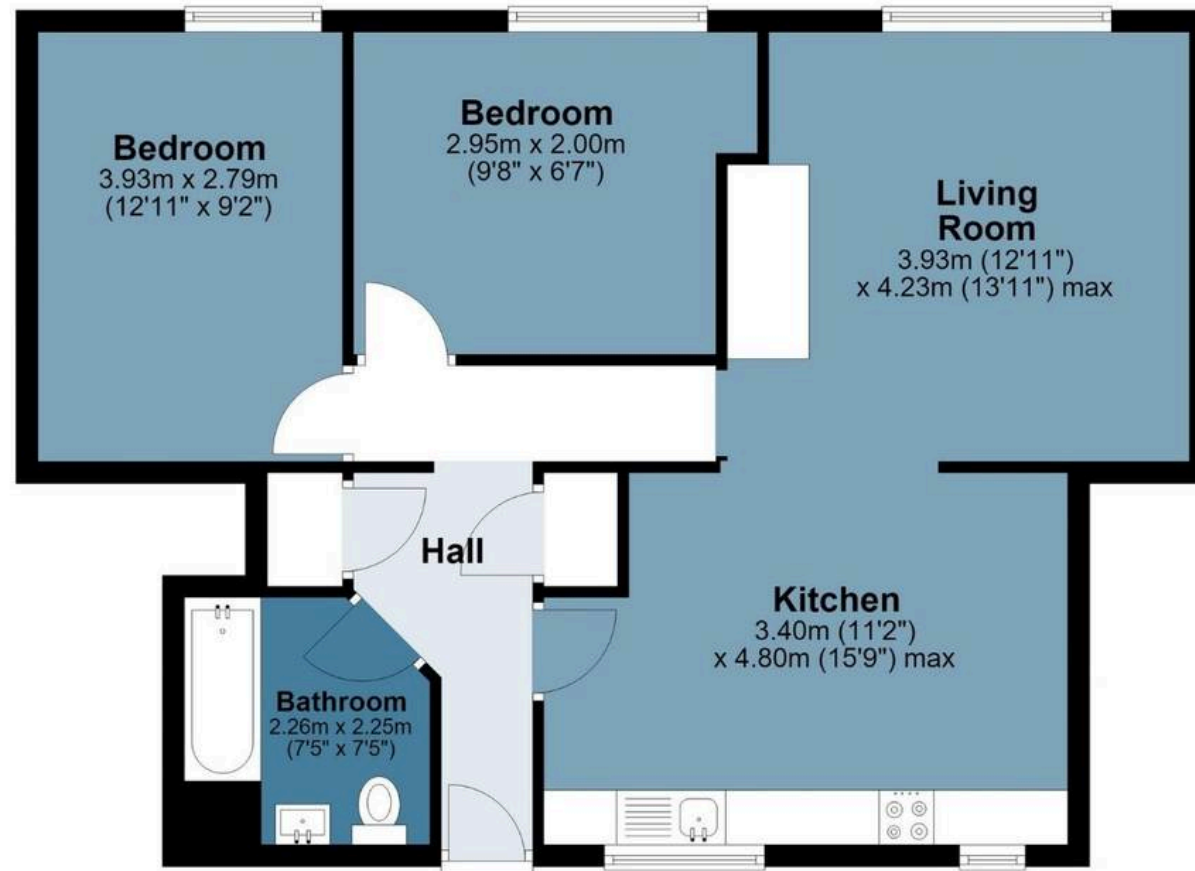
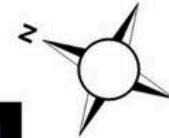


# Ranwell Close

Approx. Gross Internal Area 68.8 sq. metres (740.8 sq. feet)

## Fourth Floor

Approx. 68.8 sq. metres (740.8 sq. feet)



Measurements are approximate and for illustration purposes only. While we do not doubt the accuracy and completeness, we advise you conduct a careful independent assessment of the property to determine monetary value

# FROM EAST LONDON ENERGY TO WEST ESSEX EASE

## We Make Moving Home Easy.

At Butler and Stag, we do more than just connect London to West Essex – we make the move seamless. With offices spanning from vibrant East London to the tranquillity of West Essex, we understand the nuances of each area and the journey people take between them. Our marketing goes beyond standard listings, showcasing every property with precision, creativity, and reach that others simply can't match. Coupled with an unparalleled attention to detail, from first enquiry to final move-in, we ensure every client and customer feels informed, supported, and confident. Simply put, we do the little things that make a big difference, setting us apart in every step of the property experience.



LONDON   STRATFORD   SOUTH WOODFORD   BUCKHURST HILL   LOUGHTON   EPPING   BEYOND

# Like what you see? Let's talk

Book your **FREE** valuation now



020 8102 1236

[london@butlerandstag.com](mailto:london@butlerandstag.com)

508 Roman Road, Bow, London, E3 5LU

[butlerandstag.uk](http://butlerandstag.uk)

IMPORTANT NOTICE - These particulars have been prepared in good faith and they are not intended to constitute part of an offer or contract. We have not performed a structural survey on this property and the services, appliances and specific fittings have not been tested. All photographs, measurements, floor plans and distances referred to are given as a guide and should not be relied upon.

BUTLER & STAG

