



Main Street, Whittington, Lichfield, WS14 9JS

£575,000

3 2 3



Occupying a prominent position on Main Street in the charming village of Whittington, this characterful three-bedroom semi-detached property offers beautifully presented accommodation ideal for modern family living.

This property is ideally positioned within the heart of the highly sought-after Whittington, offering a strong sense of community and an excellent range of local amenities. The village benefits from a popular primary school, local shops, traditional public houses, and scenic countryside walks, all within easy reach. Lichfield city centre is just a short distance away, providing a wider selection of shopping, dining, and cultural attractions, as well as a mainline railway station with links to Birmingham and London. The area is well served by road networks, including the A51 and A38, making it ideal for commuters while retaining a charming village atmosphere.

The accommodation is set across two floors, with an entrance hall, separate living, dining and garden rooms, a kitchen/diner, utility room and shower room all to the ground floor, whilst to the first floor are the three bedrooms and main bathroom. A spacious driveway, private patio area and wonderful rear garden with another patio and generous lawn make up the property's exterior.

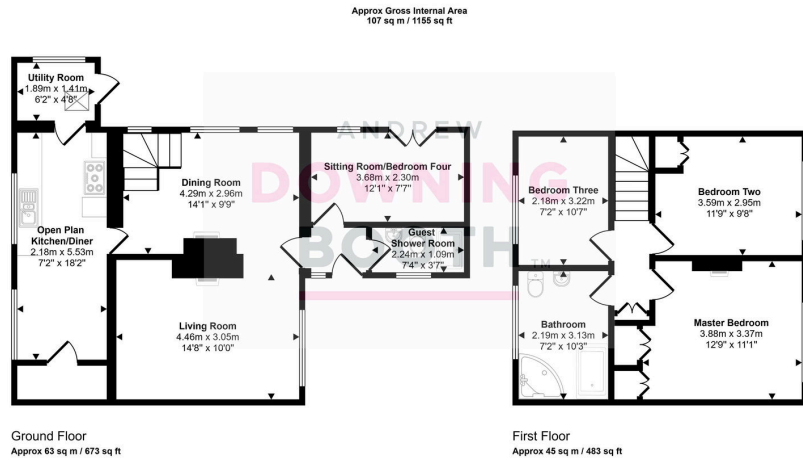
An internal viewing is highly recommended to fully appreciate the character, space, and convenient village location this home has to offer.



ANDREW
DOWNING
BOOTH
ESTATE AGENTS



ANDREW
DOWNING
BOOTH
ESTATE AGENTS



- Three Bedroom Semi-Detached Property
- Beautifully Presented Throughout
- Fabulous Garden With Feature Pod & Private Patio
- Separate Living & Dining Rooms Plus Versatile Sitting Room/Bedroom Four
- Character Features Throughout
- Spacious Driveway
- Highly Desirable Village Location
- Stunning Contemporary Style Family Bathroom
- EPC Rating: A
- Council Tax Band: E

