



ALBERT EMBANKMENT, SE1

£1,299,995

Stunning river views
Three bedrooms
Secure underground parking
Riverside development
24-hour concierge
Residents gym

@marshandparsons
marshandparsons.co.uk

MARSH &
PARSONS



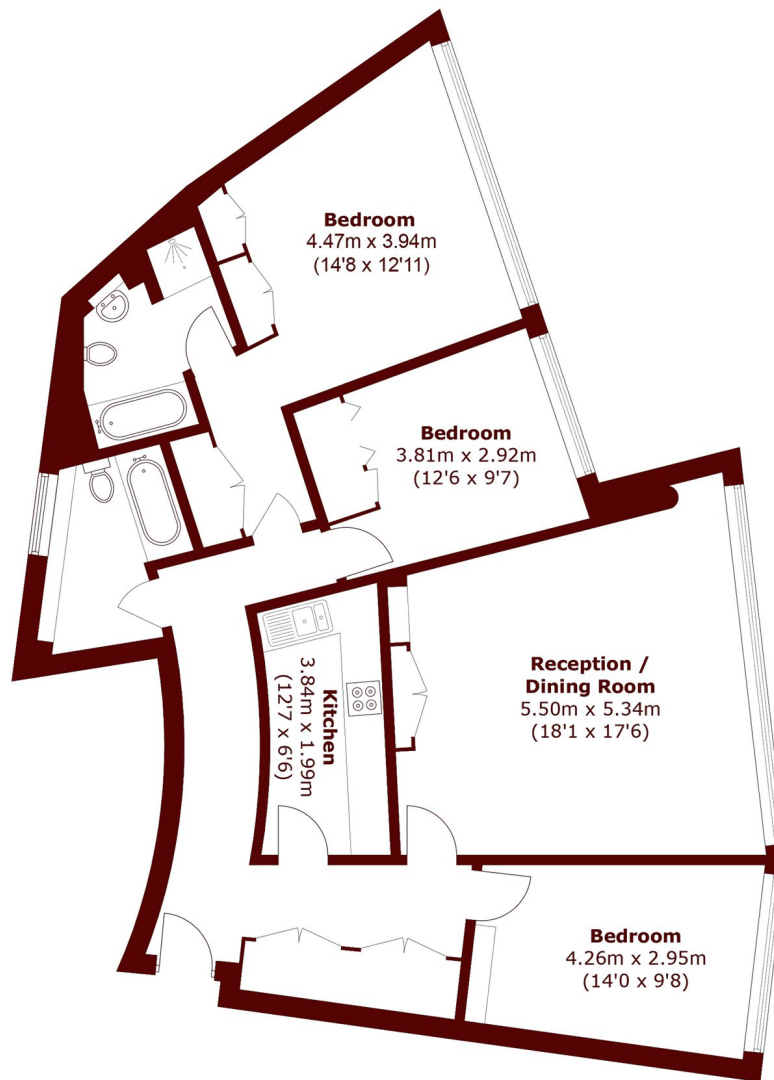
ABOUT THE PROPERTY

Boasting arguably some of the finest views in London, this exceptional three bedroom apartment is situated on the fifth floor of the sought after Parliament View Apartments. The property enjoys expansive, uninterrupted views across the River Thames towards the Houses of Parliament and Big Ben.

Parliament View is located close to Lambeth Bridge, on the banks of the River Thames. There are also excellent transport links with Westminster, Vauxhall and Lambeth North all located close by giving easy access to the rest of central London.



STEP INSIDE ALBERT EMBANKMENT



Total area (approx.): 108.4 sq. m (1,166.8 sq. ft)

Kennington
020 7587 1533

Energy Rating: D We aim to make our particulars both accurate and reliable. However, they are not guaranteed; nor do they form part of an offer or contract. If you require clarification on any points then please contact us, especially if you're traveling some distance to view. Please note that appliances and heating systems have not been tested and therefore no warranties can be given as to their good working order

**MARSH &
PARSONS**