



OVER 60?

Secure this property
for up to **59% less!**

Price

£575,000

Freehold

4x  3x  2x 

**Norton Close, Paddock
Wood, Tonbridge, Kent,
TN12**

Wards
Helping you move forwards



Main features

- Garage and off road parking, with car charging point
- Large rear garden and patio to enjoy
- A short distance from Paddock Wood mainline station
- Within walking distance of Mascalls School and high street amenities
- Open plan kitchen diner with large separate lounge

Accommodation

GROUND FLOOR

Entrance Hall

Lounge: 16'8 x 12'3 (5.08m x 3.74m)

Playroom: 10'2 x 8'3 (3.10m x 2.52m)

Kitchen/Diner: 25'5 x 11'0 (7.75m x 3.36m)

Cloakroom: 4'7 x 3'1 (1.40m x 0.94m)

FIRST FLOOR

Landing

Bedroom 1: 12'2 x 12'1 (3.71m x 3.69m)

En suite

Bedroom 2: 14'7 x 9'1 (4.45m x 2.77m)

Bedroom 3: 10'5 x 9'1 (3.18m x 2.77m)

Bedroom 4: 10'2 x 7'5 (3.10m x 2.26m)

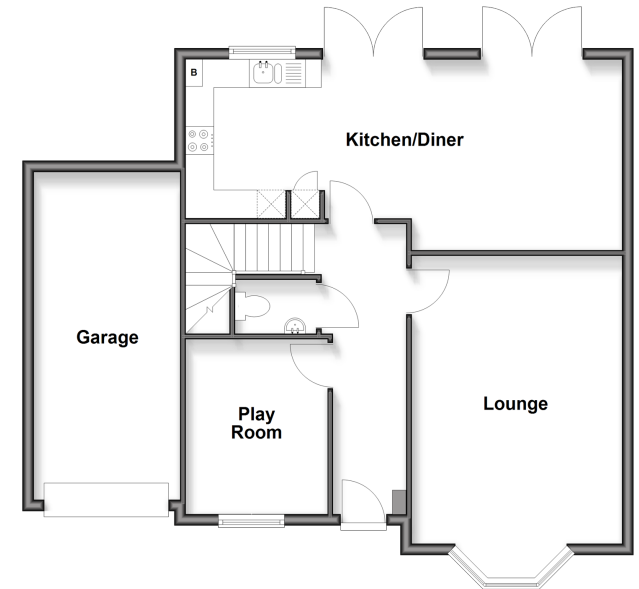
Bathroom: 8'9 x 6'4 (2.67m x 1.93m)

OUTSIDE

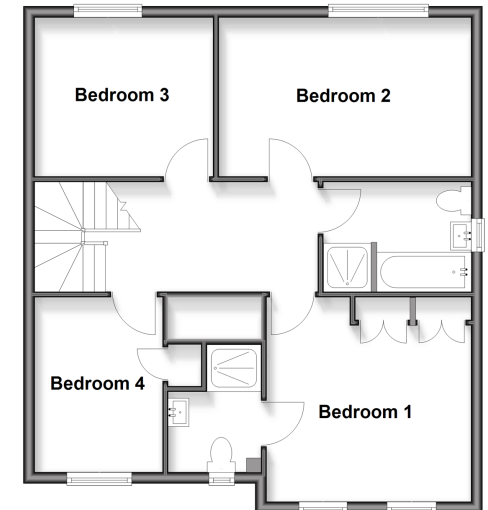
Garden

Off Road Parking

Ground Floor
Approx. 80.5 sq. metres (866.0 sq. feet)



First Floor
Approx. 64.5 sq. metres (693.8 sq. feet)



Call Paddock Wood - 01892 836877 ■ wardsofkent.co.uk

- Legal advice should be taken to verify fixtures/fittings, planning, alterations and/or lease details
- Appliances & services are untested, dimensions are approximate and floor plans are not to scale
- Through a Homewise Home For Life Plan people aged 60+ can secure this property for up to 50% less, by purchasing a Lifetime Lease.



13627337/20250823/LF/GD