

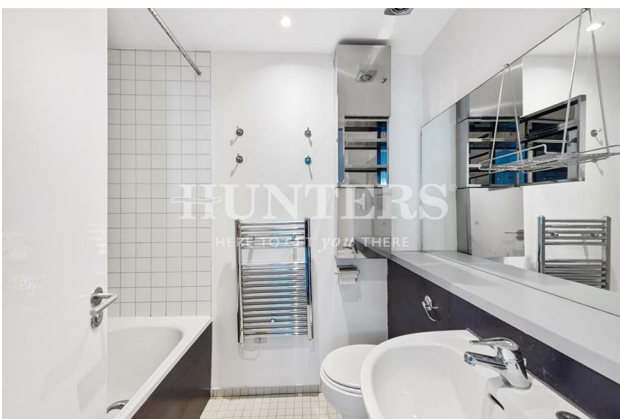
HUNTERS[®]

HERE TO GET *you* THERE

Red Square, Carysfort Road, London, N16

Asking Price £750,000

Property Images



HUNTERS[®]

HERE TO GET *you* THERE

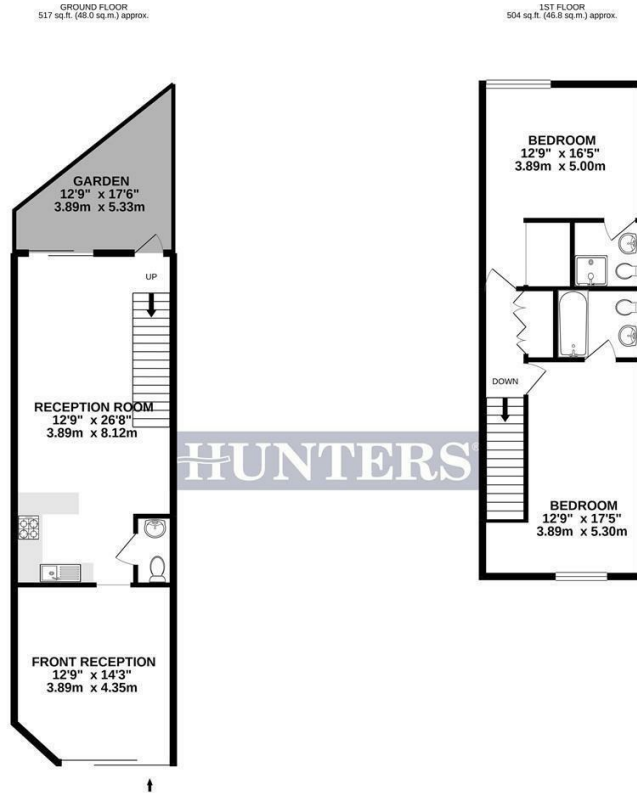
Property Images



HUNTERS®

HERE TO GET *you* THERE

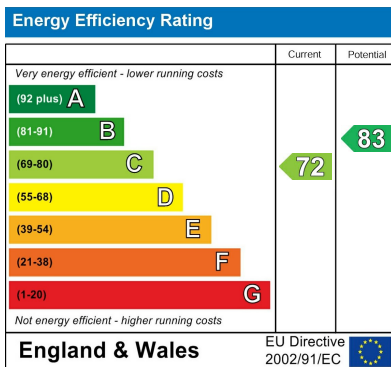
Floorplan



Whilst every attempt has been made to ensure the accuracy of the floorplan contained here, measurements of doors, windows, rooms and any other items are approximate and no responsibility is taken for any error, omission or mis-statement. This plan is for illustrative purposes only and should be used as such by any prospective purchaser. The services, systems and appliances shown have not been tested and no guarantee as to their operability or efficiency can be given. Made with Metrepro 15/23.



EPC



Map



Details

Type: Maisonette Beds: 2 Bathrooms: 2 Receptions: 1 Tenure: Leasehold

Summary

Chain free and available to view by appointment, this well-presented two double bedroom maisonette spans over 1,020 sq. ft. (94 sq. m.) and forms part of an award-winning gated development on one of Stoke Newington's premier roads.

Arranged over the ground and first floor, the property offers a spacious double reception with integrated kitchen and direct access to a private patio garden. Upstairs features a principal bedroom with en-suite shower room, a second double bedroom, and a modern family bathroom. There is also a ground floor guest W.C. and excellent storage throughout. Further benefits include a 24-hour concierge, secure bicycle storage and off-street parking.

Red Square, Piano Lane, is ideally positioned just moments from the shops, bars and restaurants of Stoke Newington Church Street, as well as local schools and the wide open spaces of Clissold Park.

Transport links are excellent with Stoke Newington (Overground), Canonbury (Overground), Arsenal (Piccadilly Line) and a variety of bus routes into The City & West End all within easy reach.

Features

- Chain free
- Two bedrooms
- Two bathrooms
- Off-street parking
- Gated development
- Close to Clissold Park