



Flat

141 CAMDEN HIGH STREET, NW1 7JR

Per Month
£2,900

Available: 16th December 2025

FEATURES

- Refurbished
- Finished To A High Standard
- Wooden Flooring Throughout
- Moments to Camden Town Underground
- Great Sized Double Rooms
- Bright Reception Room
- Superbly Located For All Of Camden Towns Local Amenities
- £150pcm for utilities (Gas, heating, hot water)



Huddletons

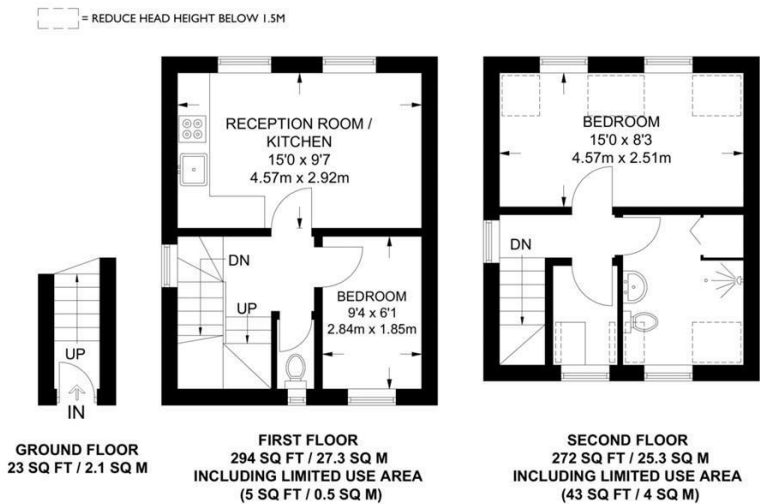
2 Bedroom Flat located in London

This bright and spacious 2-bedroom flat is ideally located, just a stone's throw from Camden Town and Chalk Farm's vibrant mix of amenities. With a stylish open-plan living area featuring a skylight that floods the space with natural light, this flat offers a comfortable and modern lifestyle.

Prime Location, Moments from Camden Town & Mornington Crescent

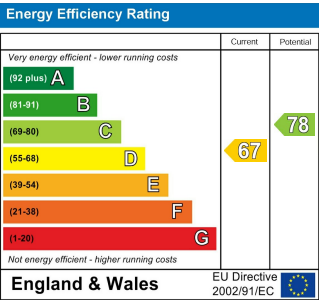
The generous bedroom provides ample space, while the separate, sleek bathroom offers convenience and privacy. The flat is perfect for those seeking a blend of comfort and excitement, with Camden Town's eclectic atmosphere right on your doorstep.

APPROXIMATE FLOOR AREA = 589 SQ FT / 54.7 SQ M
INCLUDING LIMITED USE AREA (48 SQ FT / 4.5 SQ M)



Call us on
0207 205 4411
info@huddletons.com
<http://www.huddletons.com>

Council Tax Band
D



Agents Note: Whilst every care has been taken to prepare these particulars, they are for guidance purposes only. All measurements are approximate and are for general guidance purposes only and whilst every care has been taken to ensure their accuracy, they should not be relied upon and potential buyers are advised to recheck the measurements.

Huddletons