



Azalea Court, Sycamore Road, Colchester, CO4 3NU

welcome to

Azalea Court, Sycamore Road, Colchester

This two double bedroom first floor apartment is situated on the east side of Colchester offering good access to local amenities, schooling and transport links such as Hythe station and bus services into the city. The University of Essex is also within easy reach, being located around 2 miles away.



This spacious first floor apartment offers good access to amenities and transport links and could be an ideal first time purchase or investment opportunity.

Accommodation comprises entrance hall, lounge/diner with balcony, two double bedrooms and family bathroom.

Externally there is residents parking available.

Communal Entrance Door To:

Communal Entrance Hall

With stairs to first floor.

Entrance Door To:

Hallway

Carpet, built-in cupboard, radiator, doors to:

Lounge / Diner

Upvc double glazed window to side, upvc double glazed French doors to balcony, laminate wood flooring, radiator, electric fireplace.

Kitchen

Upvc double glazed window to side, vinyl flooring, range of matching base and eye level units, work surfaces, inset stainless steel sink and drainer unit with mixer tap, built in oven and hob, spaces for fridge/freezer and washing machine.

Bedroom One

Upvc double glazed window to front, radiator, carpet, built-in wardrobe cupboards.

Bedroom Two

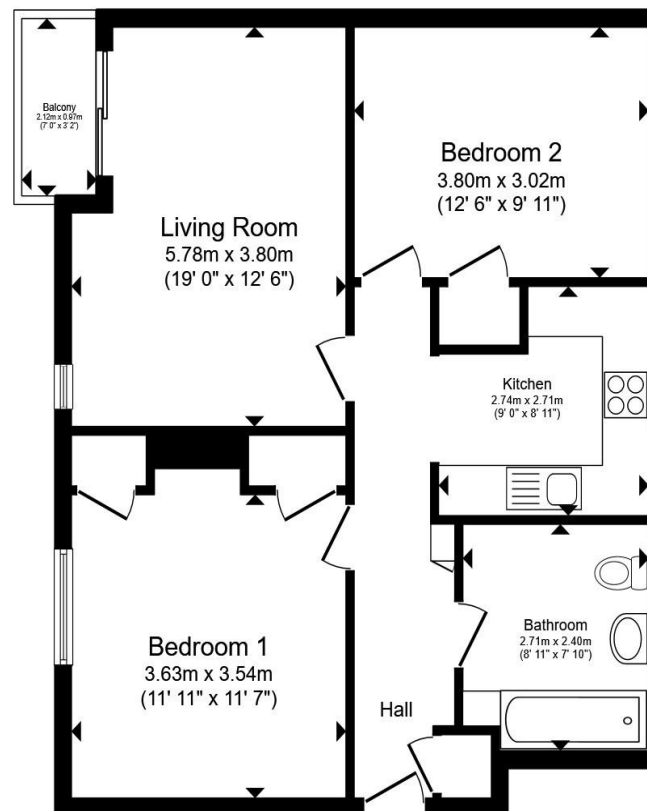
Upvc double glazed window to rear, carpet, built-in wardrobe cupboard.

Bathroom

Bath with shower over, wash hand basin, low level w.c., tiled flooring, part tiled walls, radiator, upvc double glazed window to side.

Outside

The property benefits from residents parking.



Total floor area 66.2 m² (713 sq.ft.) approx

This floor plan is for illustrative purposes only. It is not drawn to scale. Any measurements, floor areas (including any total floor area), openings and orientation are approximate. No details are guaranteed, they cannot be relied upon for any purpose and they do not form part of any agreement. No liability is taken for any error, omission or misstatement. A party must rely upon its own inspection(s). Powered by www.propertybox.io


william
h brown



view this property online williamhbrown.co.uk/Property/CCS121325



welcome to

Azalea Court Sycamore Road, Colchester

- Spacious First Floor Apartment
- Kitchen & Lounge/Diner
- Two Double Bedrooms
- Family Bathroom
- Residents Parking
- Local Amenities & Schools

Tenure: Leasehold EPC Rating: Awaited

Council Tax Band: A Service Charge: 120.00

Ground Rent: 10.00

This is a Leasehold property with details as follows; Term of Lease 125 years from 26 Jun 2000. Should you require further information please contact the branch. Please Note additional fees could be incurred for items such as Leasehold packs.

offers in excess of

£140,000



directions to this property:

Refer to map



Please note the marker reflects the postcode not the actual property

view this property online [williamhbrown.co.uk/Property/CCS121325](https://www.williamhbrown.co.uk/Property/CCS121325)



Property Ref:
CCS121325 - 0004

1. MONEY LAUNDERING REGULATIONS Intending purchasers will be asked to produce identification documentation at a later stage and we would ask for your co-operation in order that there is no delay in agreeing the sale. 2. These particulars do not constitute part or all of an offer or contract. 3. The measurements indicated are supplied for guidance only and as such must be considered incorrect. Potential buyers are advised to recheck measurements before committing to any expense. 4. We have not tested any apparatus, equipment, fixtures or services and it is in the buyers interest to check the working condition of any appliances. 5. Where an EPC, or a Home Report (Scotland only) is held for this property, it is available for inspection at the branch by appointment. If you require a printed version of a Home Report, you will need to pay a reasonable production charge reflecting printing and other costs. 6. We are not able to offer an opinion either written or verbal on the content of these reports and this must be obtained from your legal representative. 7. Whilst we take care in preparing these reports, a buyer should ensure that his/her legal representative confirms as soon as possible all matters relating to title including the extent and boundaries of the property and other important matters before exchange of contracts.

William H Brown is a trading name of Sequence (UK) Limited which is registered in England and Wales under company number 4268443, Registered Office is Cumbria House, 16-20 Hockliffe Street, Leighton Buzzard, Bedfordshire, LU7 1GN. VAT Registration Number is 500 2481 05.



william h brown



01206 577772



Colchester@williamhbrown.co.uk



8 Culver Street West, COLCHESTER, Essex, CO1 1JG



[williamhbrown.co.uk](https://www.williamhbrown.co.uk)