

75 Beresford Drive, Southport

Southport

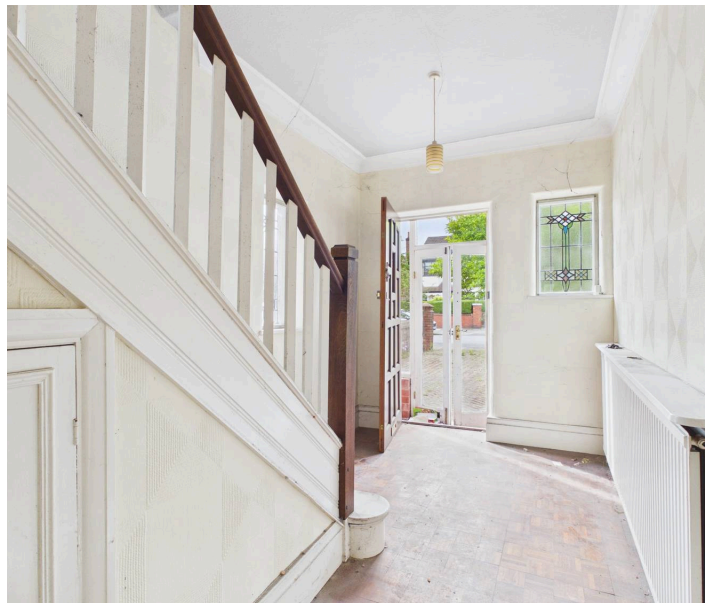
In Excess of £230,000

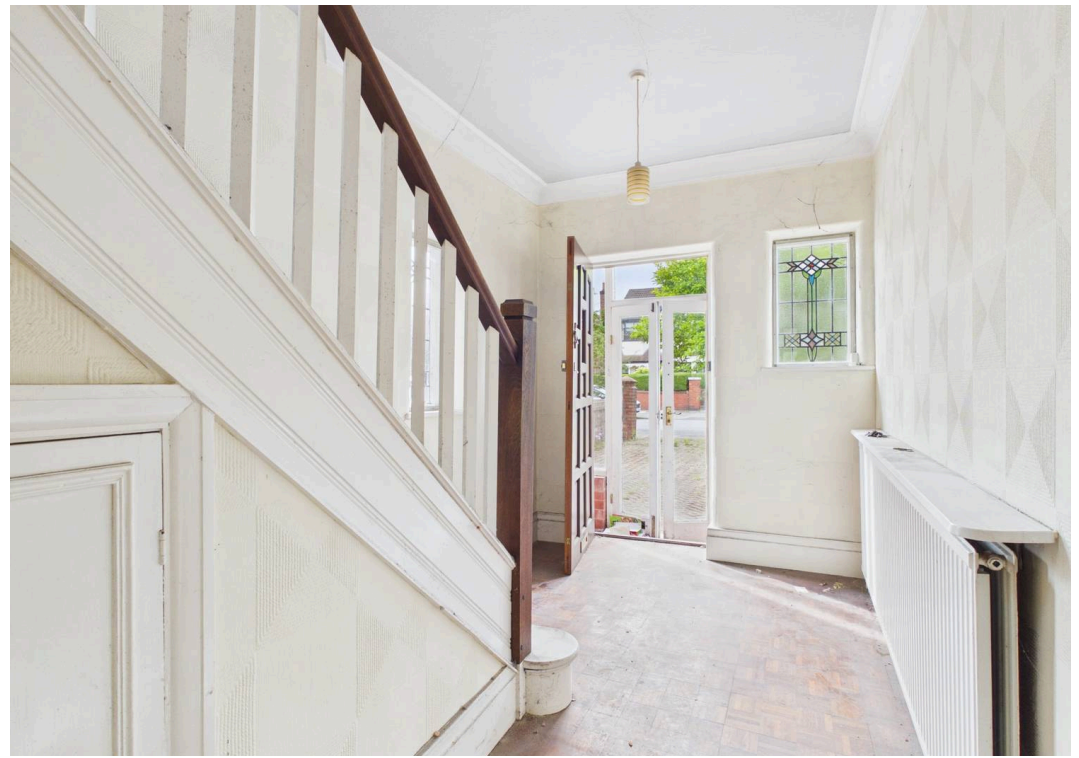
75 Beresford Drive

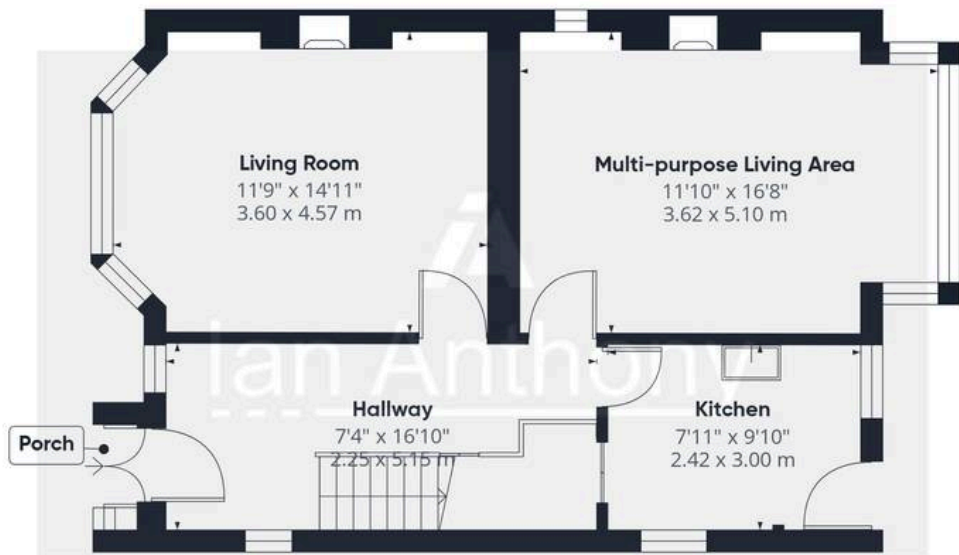
Southport

Three-bedroom detached home on Beresford Drive, Southport. Spacious, full of character, large garden, driveway, garage. Needs renovation. Great potential. Close to amenities and schools. Council Tax band: E

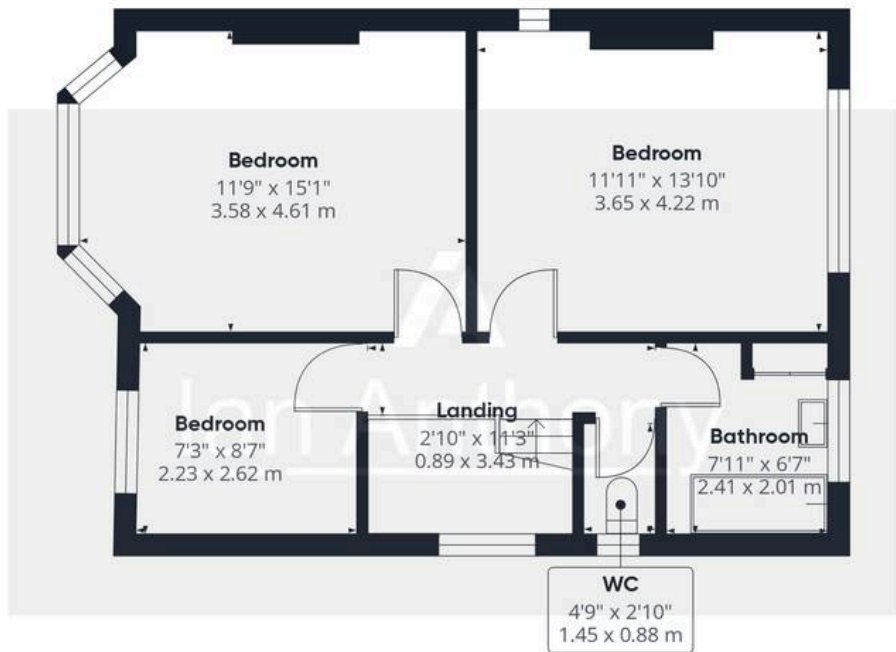
- Excellent renovation project
- No Chain
- Detached family home
- Three well-proportioned bedrooms
- Living room and separate dining room
- Detached garage







Ground Floor



Floor 1

Approximate total area⁽¹⁾

1076 ft²
100 m²

(1) Excluding balconies and terraces

Calculations reference the RICS IPMS 3C standard. Measurements are approximate and not to scale. This floor plan is intended for illustration only.

GIRAFFE360





IAN ANTHONY

5 Burscough Street, Ormskirk - L39 2EG

01695580888

enquiries@iananthonyestates.co.uk

iananthonyestates.co.uk/

