



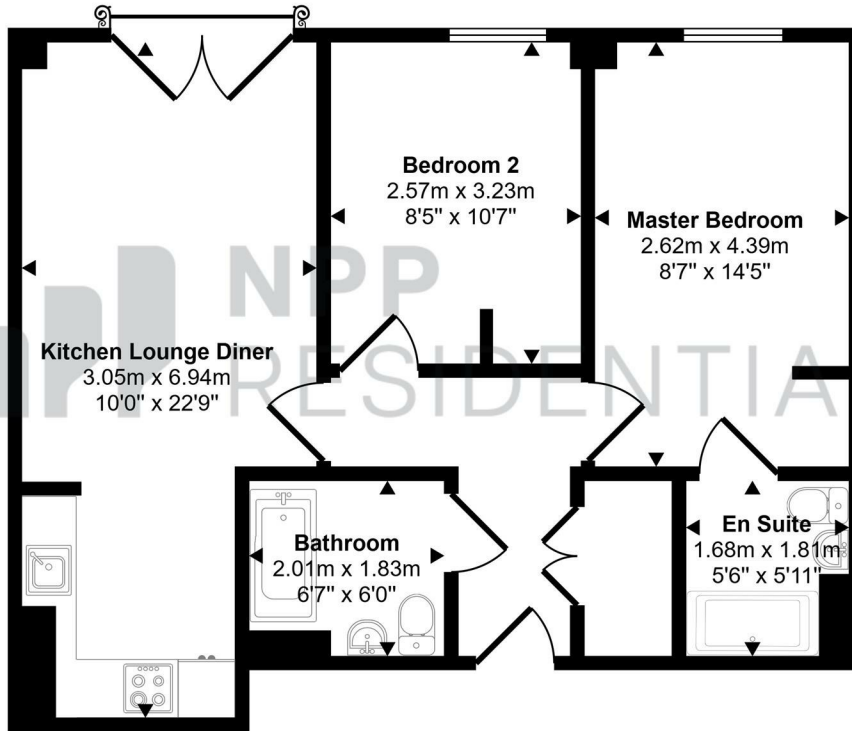
2 Bed  
Apartment  
located in

£240,000



 **NPP**  
RESIDENTIAL

Approx Gross Internal Area  
56 sq m / 598 sq ft



Floorplan

This floorplan is only for illustrative purposes and is not to scale. Measurements of rooms, doors, windows, and any items are approximate and no responsibility is taken for any error, omission or mis-statement. Icons of items such as bathroom suites are representations only and may not look like the real items. Made with Made Snappy 360.

**DIRECTIONS**

**CONTACT**

22 Lloyd Street  
Manchester  
M2 5WA

E: [info@nppresidential.co.uk](mailto:info@nppresidential.co.uk)  
T: 0161 639 0059  
<https://nppresidential.co.uk/>

**EPC Rating: C**  
**Council Tax Band: B**

