



Sunbury Court Road, TW16

£2,595 Per calendar month

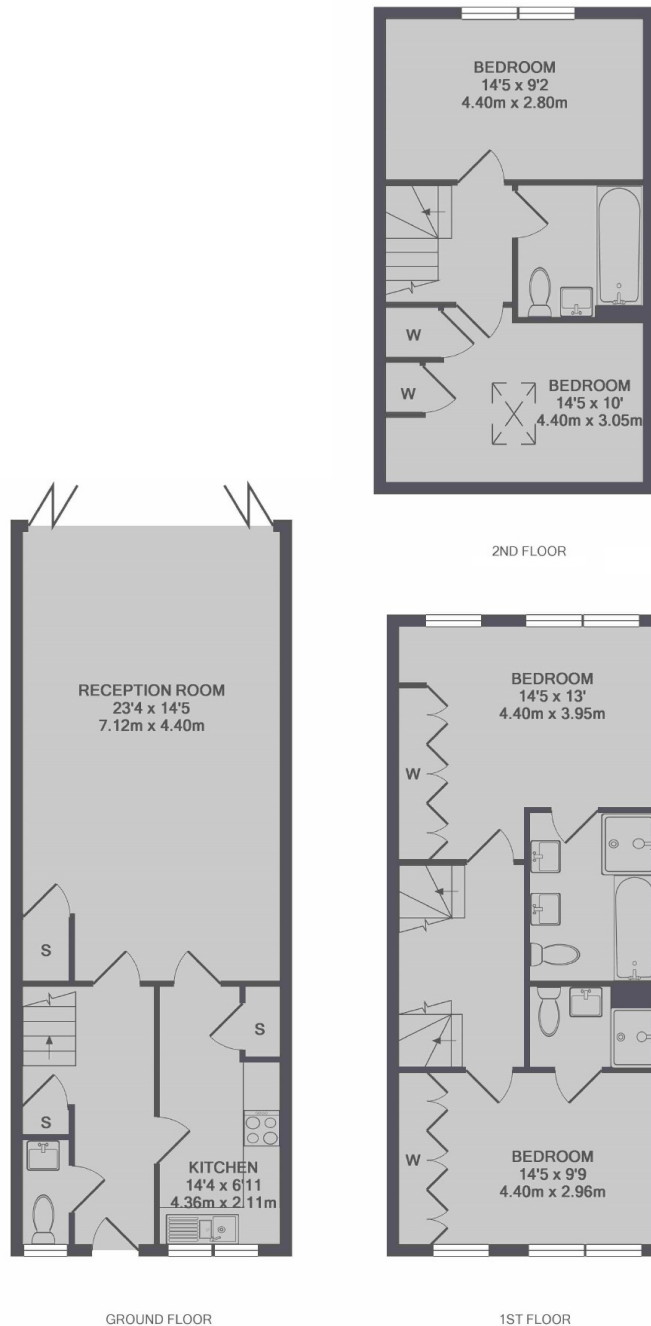
This modern family home offers a large living space with bi-folding doors to the rear garden, separate kitchen, downstairs cloakroom, four double bedrooms, three bathrooms and off-street parking.

Sunbury Court Road is located just 0.7 miles from both Sunbury and Kempton Park station and has excellent access onto the A316, M3 and M25.

Features

- Modern Home
- Open Plan Lounge
- Four Bedrooms
- Three Bathrooms
- Good size Garden
- Off-Street Parking

Sunbury Court Road, Sunbury-On-Thames, TW16



TOTAL APPROX. FLOOR AREA 1413 SQ.FT. (131.2 SQ.M.)