

Barnsbury Lane, Surbiton

Monthly Rental Of £1,500

1 Bedrooms | 1 Bathrooms | 1 Reception

IVY GATE™



Summary:

Sundial Court is conveniently located for excellent transport links, with Tolworth Mainline Station providing direct services into London Waterloo, making it ideal for commuters. The nearby A3 also offers easy access in and out of London, as well as routes towards Surrey and the South Coast. Tolworth itself offers a range of local amenities including shops, supermarkets, cafés, and gyms, while nearby Kingston upon Thames provides a wider selection of retail, dining, and leisure options. The area also benefits from a number of green spaces, perfect for outdoor activities and weekend relaxation.

One Bedroom Apartment

Second Floor

Short Walk To Tolworth Mainline Station

Modern Bathroom

Open Plan Modern Kitchen

Allocated Parking For One Car

Barnsbury Lane, Surbiton

Monthly Rental Of £1,500

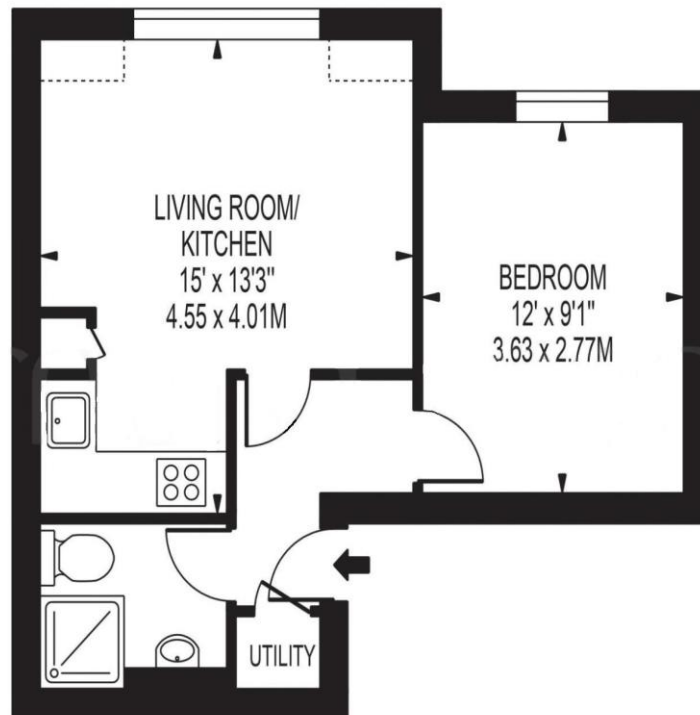
1 Bedrooms | 1 Bathrooms | 1 Reception

IVY GATE™



SUNDIAL COURT

APPROXIMATE GROSS INTERNAL FLOOR AREA: 363 SQ FT - 33.74 SQ M



SECOND FLOOR

FOR ILLUSTRATION PURPOSES ONLY

Tenure:

Council Tax:

Local Authority: Royal Borough of Kingston upon
Thames

MONEY LAUNDERING REGULATIONS 2003

Intending purchasers will be asked to produce identification and proof of financial status when an offer is received. We would ask for your co-operation in order that there will be no delay in the offer process.

THE PROPERTY MISDESCRIPTIONS ACT 1991

The agent has not tested any apparatus, equipment, fixtures and fittings or services and so cannot verify that they are in working order or fit for the purpose. A Buyer is advised to obtain verification from their Solicitor or Surveyor. References to the Tenure of a Property are based on information supplied by the Seller. The Agent has not had sight of the title documents. The mention of any appliances and services within these details does not imply that they are in full and efficient working order. These particulars are intended as a guide and act as information to prospective buyers. They are not an offer or contract, or part of one. All details, areas, measurements floorplans and distances referred to are given as a guide only and should not be relied upon, they are approximate and illustrative only and **not to scale**. Lease details, service charges and ground rent (where applicable) are given as a guide only and the agent has not had sight of the original documentation, they should be checked by your solicitor prior to exchange of contracts.