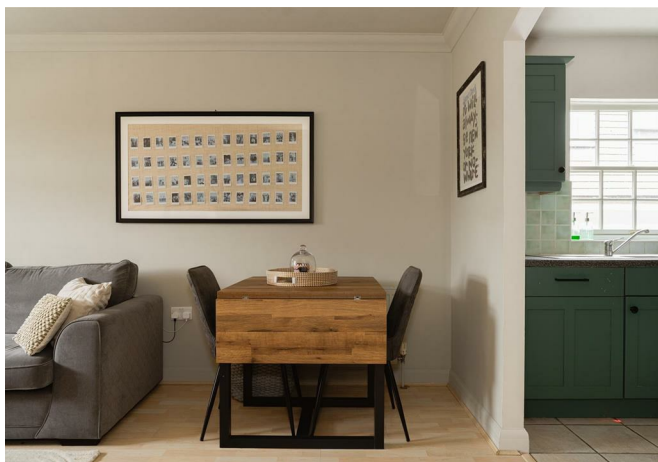




# Station Road North, Redhill

£325,000





“

A newly refurbished top-floor apartment offering bright, modern living in a highly convenient Merstham location. With two double bedrooms, allocated parking and fast links to London and Gatwick, it's an ideal home for comfort and connectivity.

”



Positioned on the popular Station Road North, this thoughtfully updated top-floor apartment at Stephenson Place offers a comfortable and well-presented home within a modern development built in the early 2000s. Recently refurbished by the current owner, the property provides a fresh, move-in-ready space that will appeal to anyone looking for practical, low-maintenance living in a convenient setting. Available chain free for buyers convenience.

Step inside and you're met with an impressive sense of openness. The layout has been thoughtfully designed to maximise both living space and storage, with a loft, fitted wardrobes and multiple cupboards ensuring everything has its place. The current owner's tasteful improvements have created a modern, welcoming home that feels instantly comfortable.

The apartment features two generous double bedrooms, including a principal suite complete with its own ensuite shower room. A well-appointed main bathroom serves the rest of the home. The standout living/dining room enjoys a bright dual-aspect outlook and flows seamlessly into the fitted kitchen — ideal for relaxed evenings in or hosting friends. The communal areas throughout the building are well maintained, adding to the overall appeal.

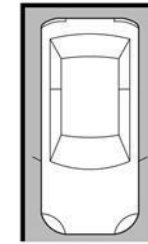
Outside, residents benefit from an allocated parking space and a peaceful communal garden at the rear — a lovely spot to unwind on warmer days.

Merstham itself sits on the edge of the Surrey Hills, offering that perfect blend of village charm and excellent connectivity. Redhill's vibrant town centre is just moments away, home to The Belfry, The Light cinema and a wide choice of cafés, restaurants and leisure facilities. For commuters, Merstham station is a standout advantage, providing direct links into London and Gatwick in under 30 minutes.



# Need to know

- Chain Free Newly refurbished top-floor apartment in a modern development on Station Road North.
- Fresh, move-in-ready interior updated by the current owner.
- Bright dual-aspect living/dining room with direct access to the fitted kitchen.
- Two double bedrooms, including a principal bedroom with ensuite.
- Main bathroom and useful storage throughout, including a loft.
- Allocated parking space and a quiet communal garden at the rear.
- Close to Redhill's shops, leisure facilities and everyday amenities.
- Merstham station offers fast links to London and Gatwick, ideal for commuters.



1x Allocated Parking Space



Second Floor

Stephenson Place, Station Road North, Merstham, Redhill

Total Area: 67.5 m<sup>2</sup> ... 727 ft<sup>2</sup>

FOR ILLUSTRATIVE PURPOSES ONLY.

Whilst every attempt has been made to ensure the accuracy of the floor plan shown, all measurements, positioning, fixtures, features, fittings and any other data shown are an approximate interpretation for illustrative purposes only and are not to scale.

No responsibility is taken for any error, omission, miss-statement or use of data shown.

The above statement applies to both 'Still Moving London LTD' and the Company or individual displaying this floor plan.

Unauthorised reproduction prohibited.

Â© Still Moving London LTD (www.stillmoving.london)



---

## Interested?

redhill@ralphjames.co.uk  
01737 765 555

1

ralphjames.co.uk