



OFFERS IN THE REGION OF

£700,000

Meeting House Lane

London, SE15 2UN

GARETH
JAMES

PROPERTY SUMMARY

Occupying the upper two floors of an elegant Victorian conversion, this exceptional 972 sq ft residence has been meticulously renovated to an outstanding standard, offering a seamless blend of period charm and contemporary sophistication.

2



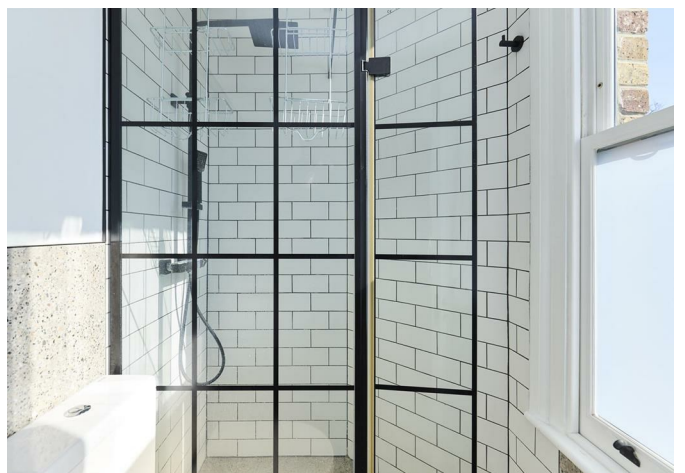
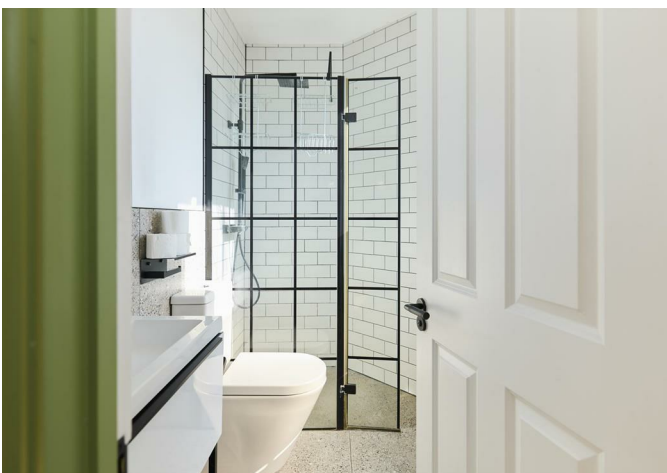
2



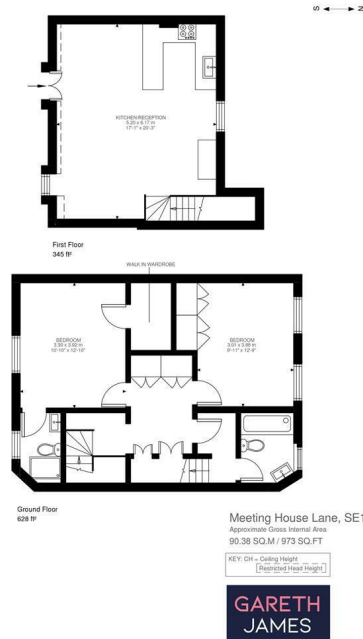
1











2	
2	
1	

Energy Efficiency Rating		
	Current	Potential
Very energy efficient - lower running costs		
(92 plus) A		
(81-91) B		
(69-80) C	83	83
(55-68) D		
(39-54) E		
(21-38) F		
(1-20) G		
Not energy efficient - higher running costs		
England & Wales	EU Directive 2002/91/EC	

Agents Note: Whilst every care has been taken to prepare these particulars, they are for guidance purposes only. All measurements are approximate and are for general guidance purposes only and whilst every care has been taken to ensure their accuracy, they should not be relied upon and potential buyers/tenants are advised to recheck the measurements

GARETH JAMES	OFFICE ADDRESS 129 Bellenden Road London SE15 4QY	OFFICE DETAILS 02077324330 sales@garethjames.com https://www.garethjames.com/
---------------------	---	--