

Elmfield Avenue

Cheltenham

Spacious first-floor maisonette with two bedrooms, modern kitchen and shower room, private entrance, loft storage, and on-street parking in a quiet cul-de-sac near town centre and amenities.

Council Tax band: A

Tenure: Leasehold

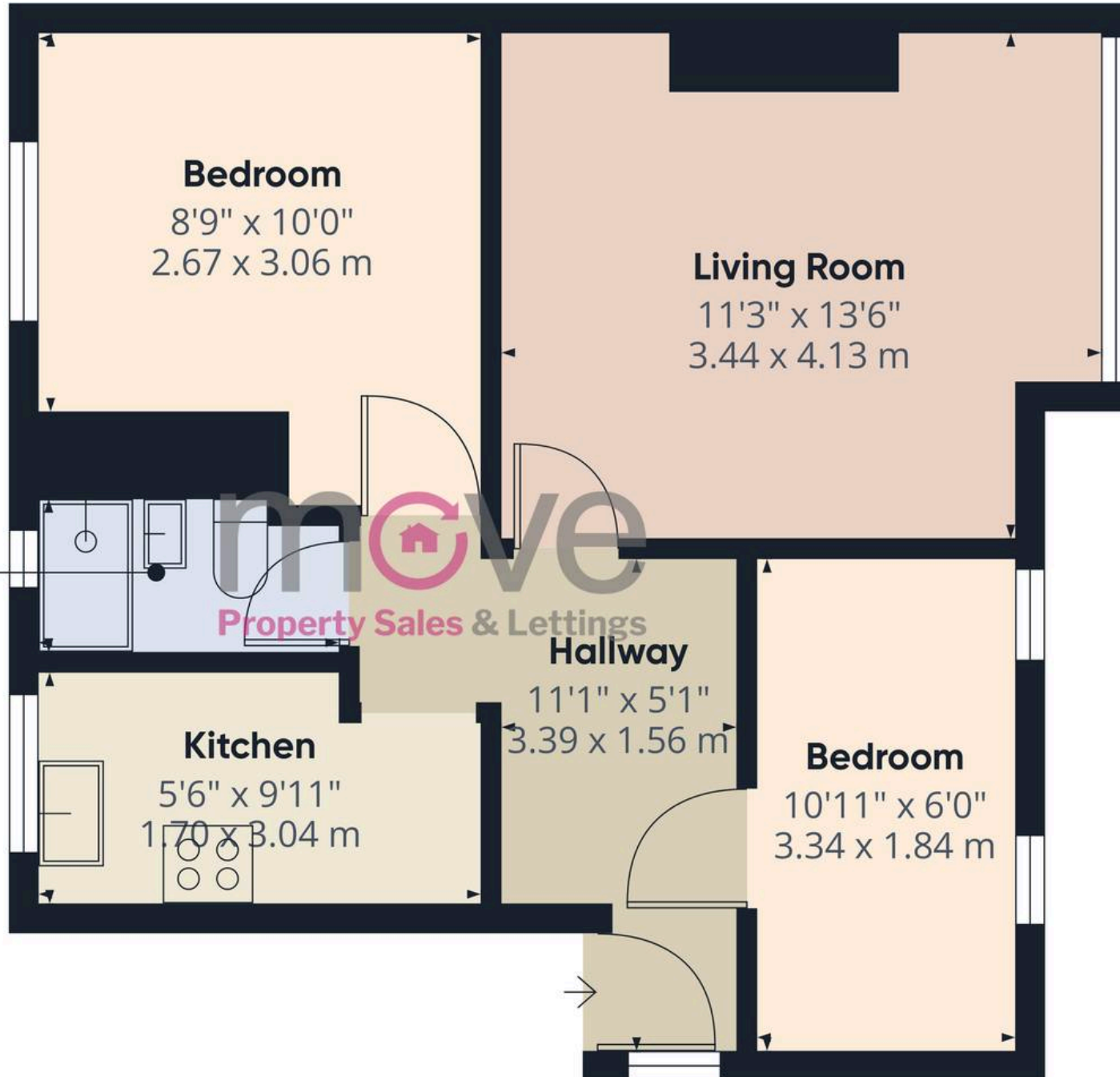
EPC Energy Efficiency Rating: C

EPC Environmental Impact Rating: C

- Spacious First Floor Maisonette
- Two Bedrooms
- Private Entrance
- Ideal For First Time Buyers Or Investors
- Modernised Shower Room
- Ample On Street Parking
- Quiet Cul De Sac Location
- Stones Throw From Elmfield Park



Bathroom
3'8" x 6'11"
1.12 x 2.12 m



Approximate total area⁽¹⁾

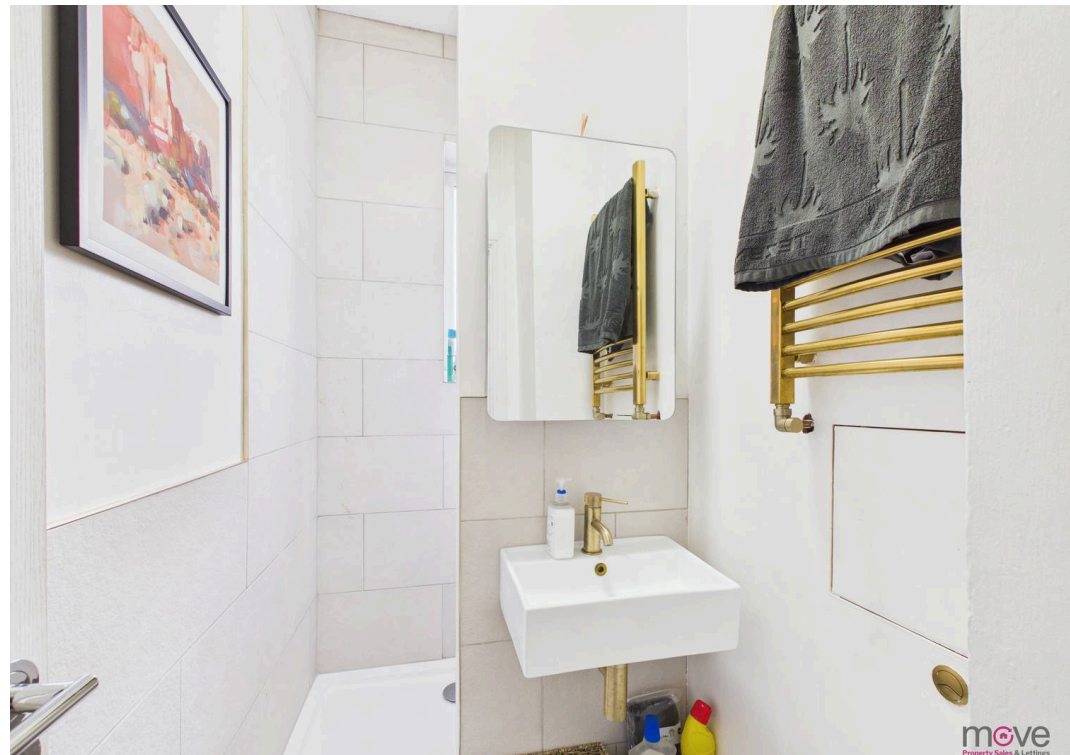
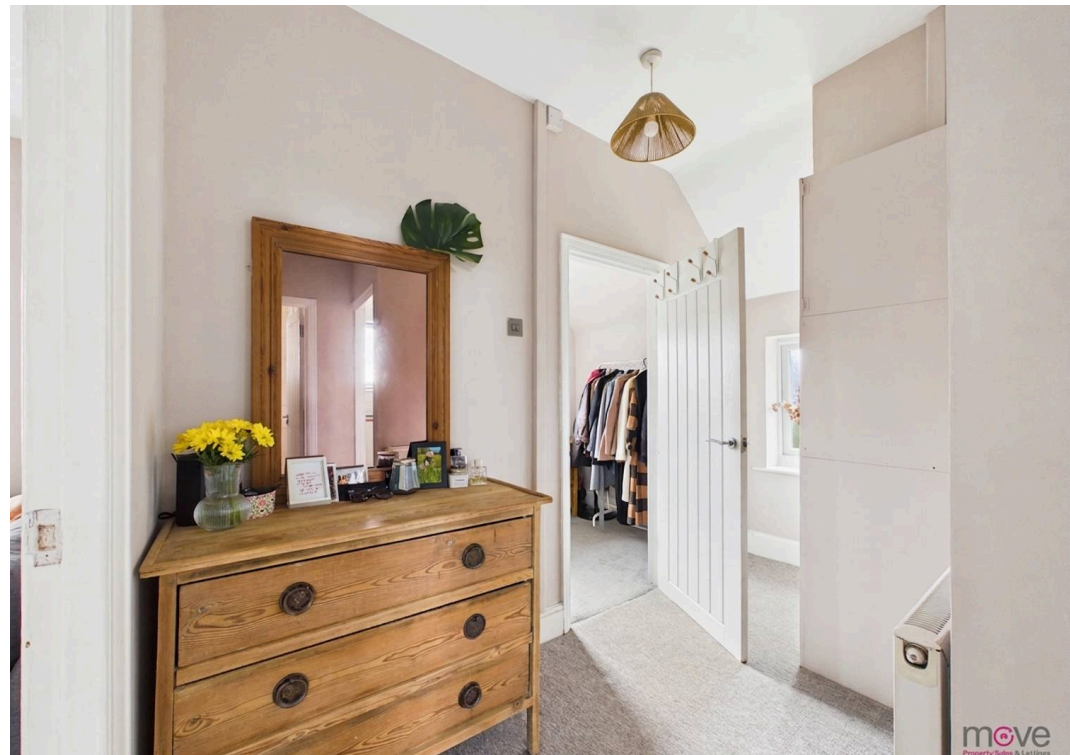
442 ft²
41 m²

(1) Excluding balconies and terraces

Calculations reference the RICS IPMS 3C standard. Measurements are approximate and not to scale. This floor plan is intended for illustration only.

GIRAFFE360







Move Estate Agents Cheltenham

1 The Clarence Clarence Parade, Cheltenham - GL50 3NY

01242 257333

cheltenham@move.uk.net

move.uk.net/

move
Property Sales & Lettings