



16 Graylands, Theydon Bois

Epping



16 Graylands

Theydon Bois, Epping

Beautifully arranged over three floors, Graylands offers spacious and versatile accommodation designed to suit modern family life

- Semi Detached Family Home
- Four Bedrooms/Two Bathrooms
- Spacious Kitchen Dining/Area
- Utility Room/Downstairs WC
- Off Street Parking
- Stunning South Facing Garden





The property combines well-balanced living space with generous bedrooms creating a home that is both practical and welcoming.

The ground floor features a bright and sociable kitchen/dining room, providing the perfect hub for everyday living and entertaining alike. A separate living room offers a comfortable space to unwind, while the utility room and cloakroom add further convenience.

The first floor provides three bedrooms served by a family bathroom, while the top floor is dedicated to an impressive principal bedroom suite with en-suite facilities, creating a private retreat away from the rest of the home.

Outside, the property enjoys a stunning south-facing garden, offering an excellent space for outdoor dining, entertaining and family enjoyment throughout the day, with plenty of natural sunlight.

With its flexible layout, spacious accommodation and family-friendly design, Graylands is ideally suited to buyers seeking a home that can adapt to changing needs while offering comfortable living both inside and out.

Council Tax band: D

Tenure: Freehold

EPC Energy Efficiency Rating: E

EPC Environmental Impact Rating: F

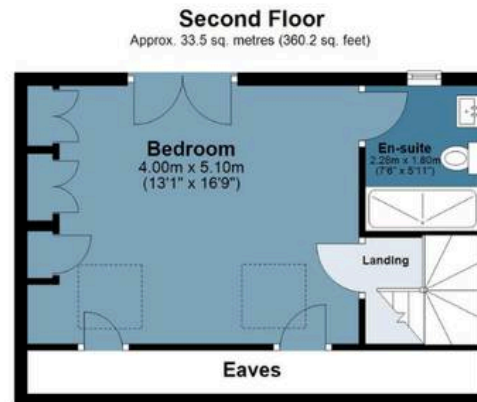
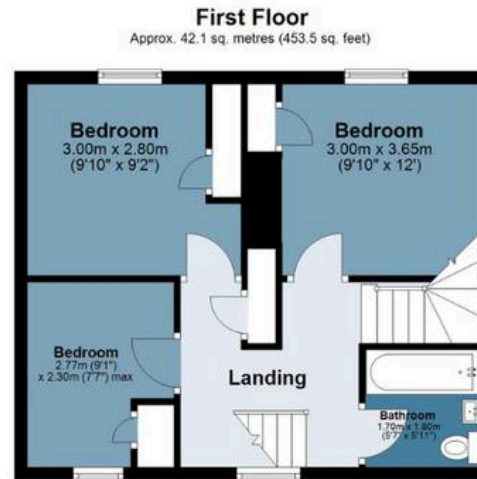
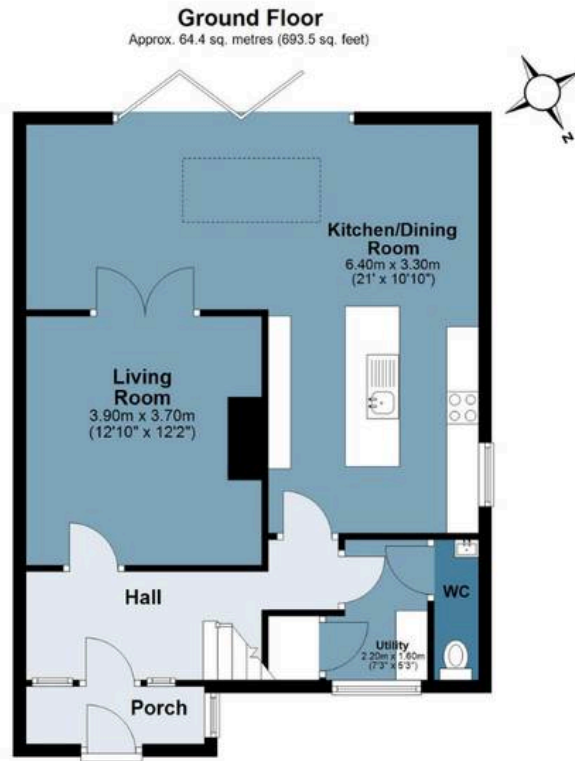






Graylands

Approx. Gross Internal Area 140.0 sq. metres (1507.2 sq. feet)



Measurements are approximate and for illustration purposes only. While we do not doubt the accuracy and completeness, we advise you conduct a careful independent assessment of the property to determine monetary value

FROM EAST LONDON ENERGY TO WEST ESSEX EASE

We Make Moving Home Easy.

At Butler and Stag, we do more than just connect London to West Essex – we make the move seamless. With offices spanning from vibrant East London to the tranquillity of West Essex, we understand the nuances of each area and the journey people take between them. Our marketing goes beyond standard listings, showcasing every property with precision, creativity, and reach that others simply can't match. Coupled with an unparalleled attention to detail, from first enquiry to final move-in, we ensure every client and customer feels informed, supported, and confident. Simply put, we do the little things that make a big difference, setting us apart in every step of the property experience.



LONDON STRATFORD SOUTH WOODFORD BUCKHURST HILL LOUGHTON EPPING BEYOND

Like what you see? Let's talk

Book your **FREE** valuation now



01992 667666

theydon@butlerandstag.com

4 Forest Drive, Theydon Bois, CM16 7EY

[butlerandstag.uk](https://www.butlerandstag.uk)

IMPORTANT NOTICE - These particulars have been prepared in good faith and they are not intended to constitute part of an offer or contract. We have not performed a structural survey on this property and the services, appliances and specific fittings have not been tested. All photographs, measurements, floor plans and distances referred to are given as a guide and should not be relied upon.

BUTLER & STAG

