



Milton Road, W7

£1,200 Per week

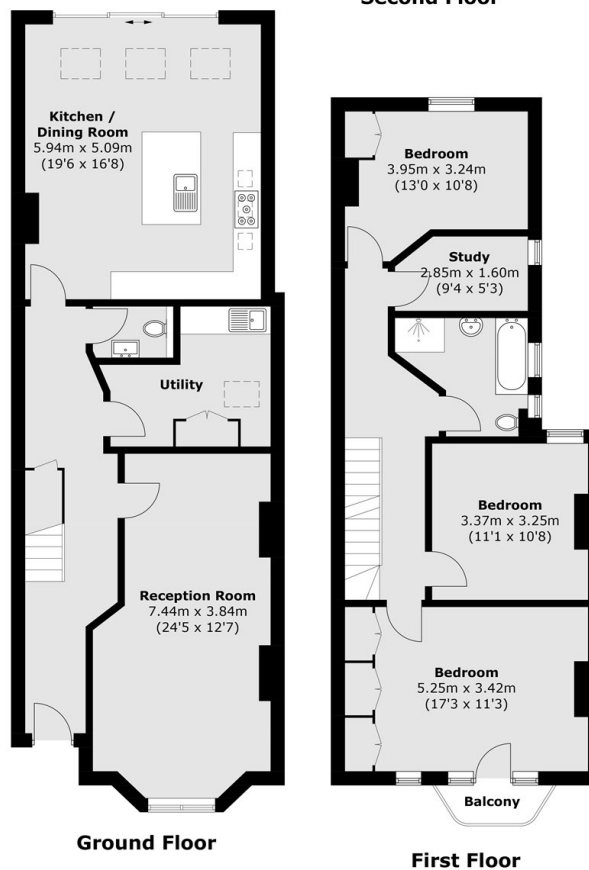
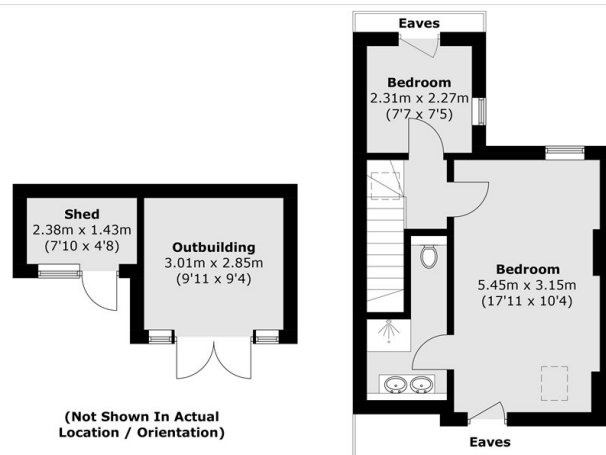
A substantial five-bedroom home offering three modern bathrooms, a spacious open-plan kitchen and lounge, and a generous double reception room. The property enjoys a beautifully landscaped garden, ideal for relaxing or entertaining, and is conveniently located within close proximity to the Elizabeth Line, providing fast and reliable transport links.

Milton Road is located 0.3 miles from Hanwell Station (Elizabeth Line). Milton Road is also close to local schools and has bus links into Ealing Broadway which offers an array of Transport links

Features

- Five Bedrooms
- Three Bathrooms
- Spacious Kitchen/Lounge
- Double Reception
- Landscaped Garden
- Close Proximity to Elizabeth Line

Milton Road,
London, W7



Total area (approx.): 183.3 sq. m (1,973.0 sq. ft)
(Excluding Eaves)
Outbuilding / Shed: 12.6 sq. m (135.6 sq. ft)
Balcony: 1.7 sq. m (18.3 sq. ft)

Dexters

Northfields
140 Northfield Avenue
London
W13 9SB
Lettings
020 8545 8589

Energy Rating: D. We aim to make our particulars both accurate and reliable. However they are not guaranteed; nor do they form part of an offer or contract. If you require clarification on any points then please contact us, especially if you're traveling some distance to view. Please note that appliances and heating systems have not been tested and therefore no warranties can be given as to their good working order.

RICS Regulated
Estate Agent
and Letting Agent

dexters.co.uk