



# Camden Square

Camden, NW1

£2,150 per month  
(£496.15 per week)

Situated within the Camden Square conservation area is this larger than average 1 Bedroom apartment with it's own private Patio. The Property benefits from a newly fitted eat-in Kitchen which was done in 2019.

**CHESTERTONS**



# Camden Square

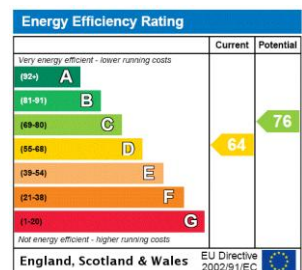
## Camden, NW1

- 1 Bedroom apartment with private Patio
- Reception, Eat-In Kitchen & Bathroom
- Camden Square conservation area



Situated within the Camden Square conservation area is this larger than average 1 Bedroom apartment with it's own private Patio. The Property benefits from a newly fitted eat-in Kitchen which was done in 2019. Accommodation comprises of; spacious Reception with French doors out to the Patio, eat-in Kitchen, Double Bedroom & full Bathroom. EPC Rating "tbc"

**Minimum Term:** 4 months  
**Deposit Required:** £0.00  
**Local Authority:**  
**Council Tax Band:**  
**EPC Rating:** D  
**Part Furnished, Unfurnished**

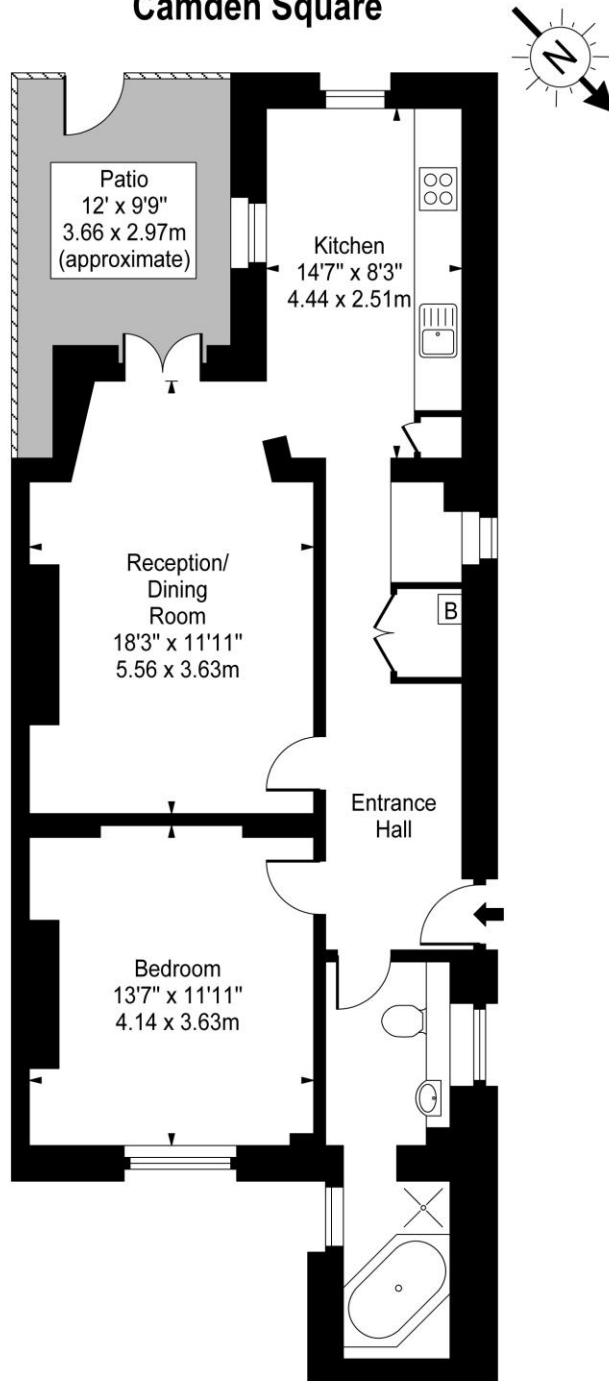


### Chestertons Camden & Primrose Hill Lettings

99-101 Parkway  
 London  
 NW1 7PP  
 camdentownlettingsusers@chestertons.co.uk  
 02072673574  
 chestertons.co.uk

Additional tenant charges apply (fees apply to non-AST tenancies only)  
 Tenancy Agreement Fee: £300  
 References per Tenant/Guarantor: £60  
 Inventory check (approx. £100 – £250 inc. VAT)  
 chestertons.co.uk/property-to-rent/applicable-fees

# Camden Square



Lower Ground Floor

Gross Internal Area - 712 Sq Ft - 66.14 Sq M

Approx Gross Internal Area **712 Sq Ft - 66.14 Sq M**

For Illustration Purposes Only - Not To Scale

[www.goldlens.co.uk](http://www.goldlens.co.uk)

Ref. No. 009238K

