



29, High Road, Stapleford
SG14 3NW
Offers In Excess Of £685,000



stevenoates.com



29 High Road, Stapleford, Hertfordshire, SG14 3NW

A spacious 5 bedroom detached family home located within a popular village location on the outskirts of Hertford. The versatile accommodation comprises of a galleried entrance hall, living room, spacious kitchen/dining/living room, separate utility, 2 bedrooms and a shower room on the ground floor. On the first floor, there are 3 further bedrooms and a family bathroom. Externally, there is ample driveway parking for a number of cars, a detached single garage and good size gardens adjoining countryside.

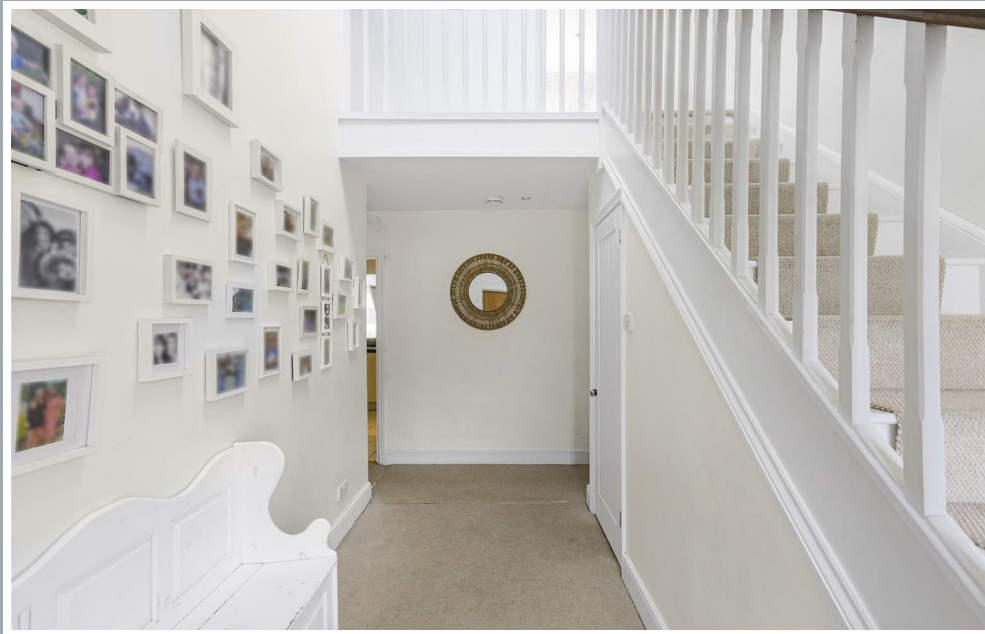
Stapleford is a small village just 2 miles from Hertford, surrounded by beautiful Hertfordshire countryside, just is a short drive from Hertford and the larger village of Watton At Stone. There is a very popular village school with a recent Ofsted rating of Good, whilst Hertford can provide an excellent choice of secondary schools.



70 Fore Street, Hertford, Hertfordshire, SG14 1BY



70 Fore Street, Hertford, Hertfordshire, SG14 1BY



70 Fore Street, Hertford, Hertfordshire, SG14 1BY



70 Fore Street, Hertford, Hertfordshire, SG14 1BY



70 Fore Street, Hertford, Hertfordshire, SG14 1BY



70 Fore Street, Hertford, Hertfordshire, SG14 1BY



70 Fore Street, Hertford, Hertfordshire, SG14 1BY

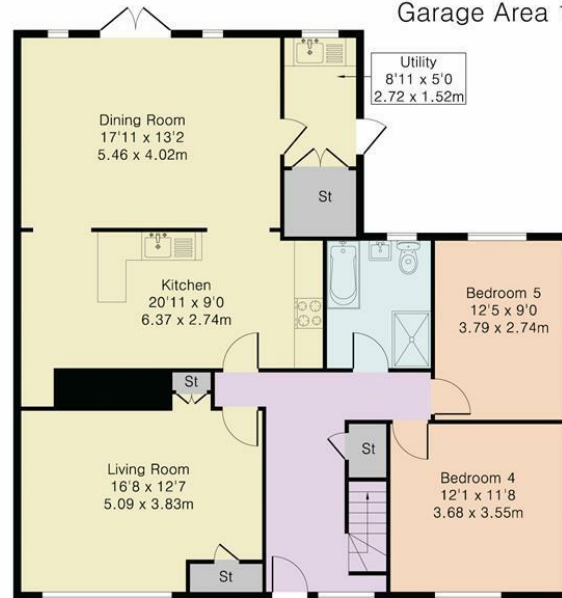


70 Fore Street, Hertford, Hertfordshire, SG14 1BY

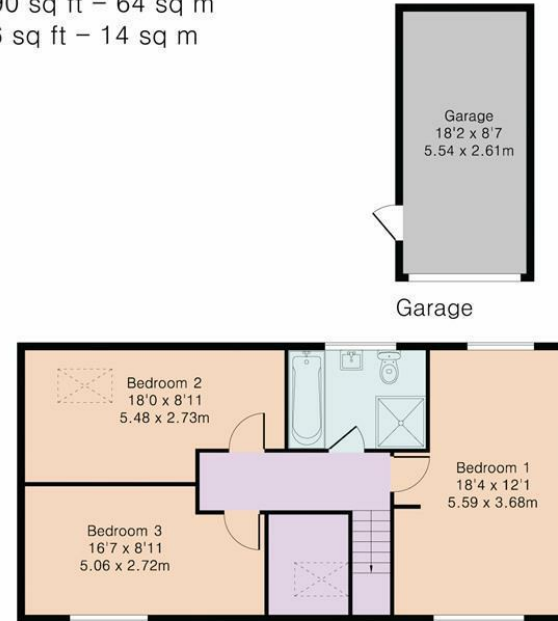


70 Fore Street, Hertford, Hertfordshire, SG14 1BY

Approximate Gross Internal Area 2087 sq ft – 193 sq m
 Ground Floor Area 1241 sq ft – 115 sq m
 First Floor Area 690 sq ft – 64 sq m
 Garage Area 156 sq ft – 14 sq m



Ground Floor



First Floor



Although Pink Plan Ltd ensures the highest level of accuracy, measurements of doors, windows and rooms are approximate and no responsibility is taken for error, omission or misstatement. These plans are for representation purposes only as defined by RICS code of measuring practise. No guarantee is given on total square footage of the property within this plan. The figure icon is for initial guidance only and should not be relied on as a basis of valuation.



These particulars, whilst believed to be accurate are set out as a general outline only for guidance and do not constitute any part of an offer or contract. Intending purchasers should not rely on them as statements of representation of fact, but must satisfy themselves by inspection or otherwise as to their accuracy. No person in this firms employment has the authority to make or give any representation or warranty in respect of the property.



stevengoates.com