



Guide Price

£650,000

Freehold

5x  2x  1x 

**Juniper Close,
Maidstone, Kent ME16**

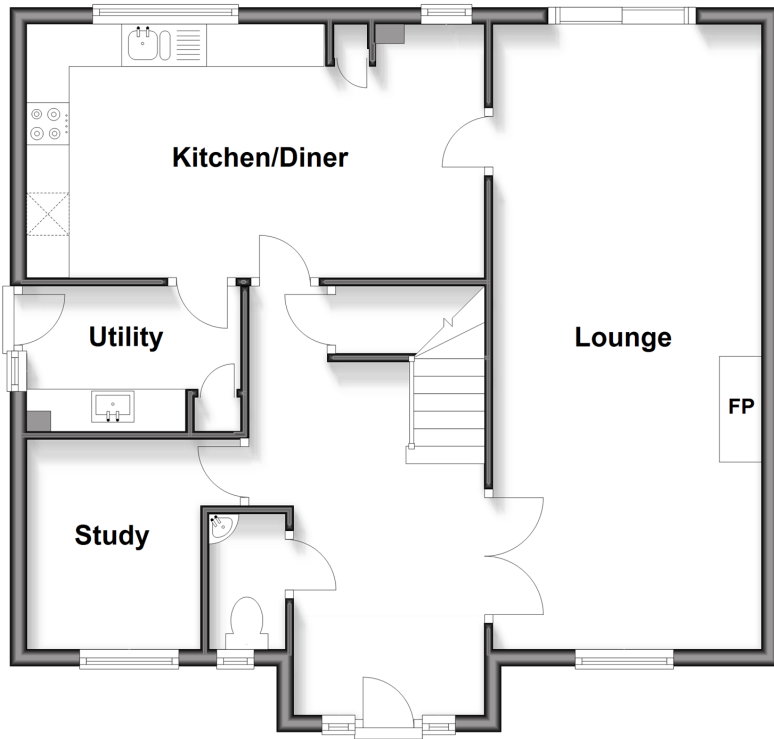
OVER 60?

Secure this property
for up to **59% less!**

Wards
Helping you move forwards

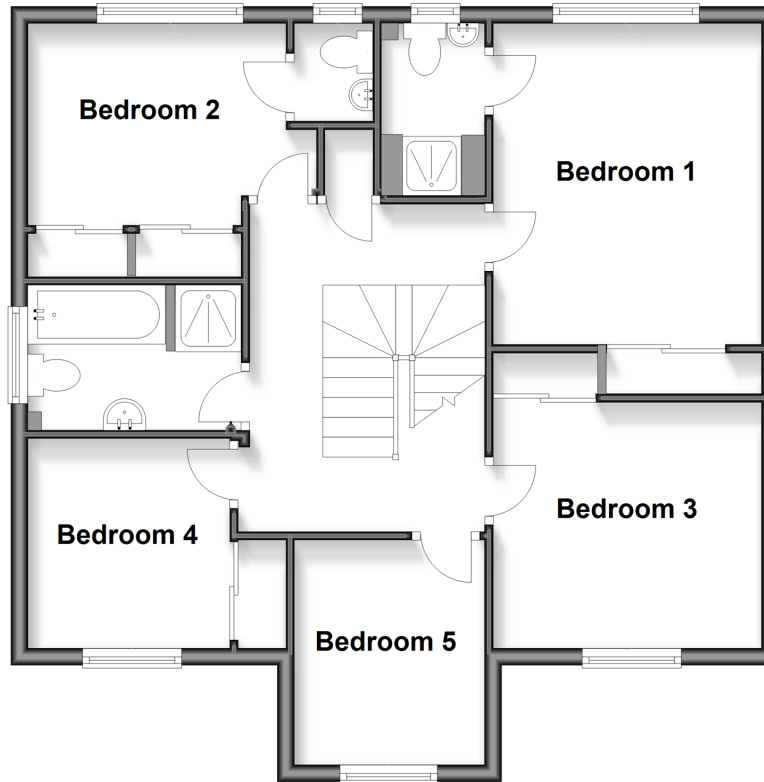
Ground Floor

Approx. 65.7 sq. metres (707.4 sq. feet)



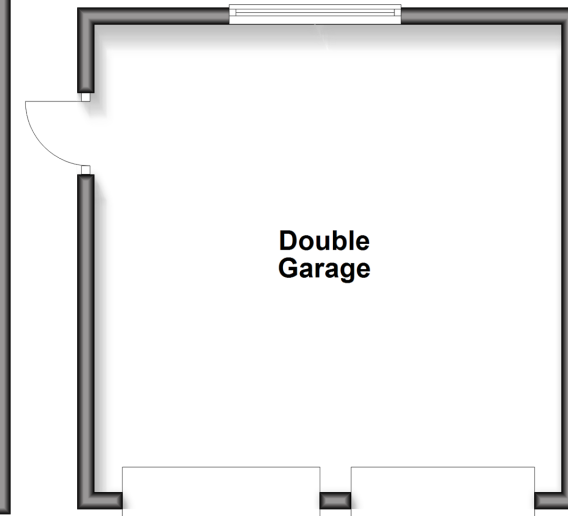
First Floor

Approx. 67.0 sq. metres (721.1 sq. feet)



Outbuilding

Approx. 29.7 sq. metres (319.6 sq. feet)



Accommodation

GROUND FLOOR

Entrance Hall
Cloakroom
Study: 7'9 x 6'7 (2.36m x 2.01m)
Lounge: 24'0 x 10'4 (7.32m x 3.15m)
Kitchen/Diner: 17'6 x 9'8 (5.34m x 2.95m)
Utility Room: 8'1 x 5'6 (2.47m x 1.68m)

FIRST FLOOR

Landing
Bedroom 1: 12'3 x 10'3 (3.74m x 3.13m)
En-Suite Shower Room
Bedroom 2: 10'4 x 9'6 (3.15m x 2.90m)
Bedroom 3: 9'6 x 7'8 (2.90m x 2.34m)
En-Suite Cloakroom
Bedroom 4: 7'9 x 7'6 (2.36m x 2.29m)
Bedroom 5: 8'7 x 7'4 (2.62m x 2.24m)
Bathroom

OUTBUILDING

Double Garage: 18'1 x 17'5 (5.52m x 5.31m)

OUTSIDE

Rear Garden
Front Garden
Driveway



Main features

- Substantial mock tudor style detached family house
- En-suite facilities to bedroom & family bathroom
- Chain free & cul-de-sac location
- Particularly large rear garden for an estate location
- Double detached garage with further off road parking



Nearest Schools

Primary Schools: Allington Primary 0.3 miles, Palace Wood Primary 0.3 miles, St Francis' Catholic Primary, Maidstone 0.8 miles

Secondary Schools: St Simon Stock Catholic School 0.9



Transport Information

Train Stations: Barming 0.4 miles, Maidstone Barracks 1.2 miles, Maidstone East 1.4 miles



Address

Juniper Close, Maidstone, Kent ME16



Directions

For directions to this property please contact us.



Wards
Helping you move forwards

Call Maidstone Branch 01622 683737 ■ wardsof Kent.co.uk



■ Through a Homewise Home For Life Plan people aged 60+ can secure this property for up to 59% less, by purchasing a Lifetime Lease



13159424/20260404/CV/DS