



## Imperial Square, SW6

£692 Per week

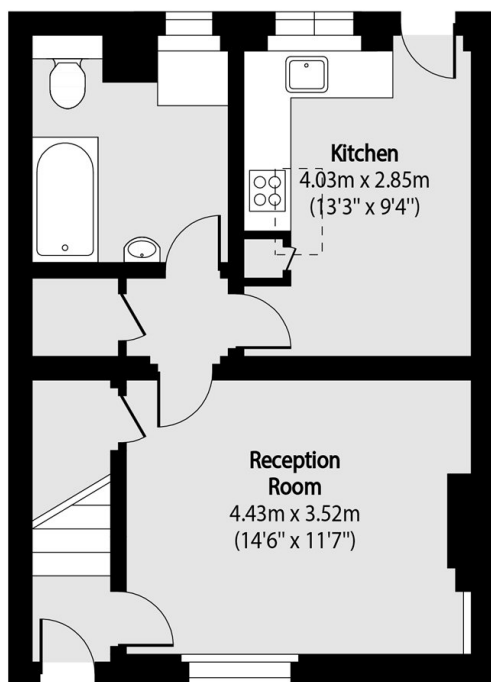
Situated on the prestigious Imperial Square, this two bedroom cottage is spread over two floors with a cosy reception room which has period features, a modern eat in kitchen with access to a private turfed garden and a further front garden.

Imperial Square is off Imperial Road with closest stations Fulham Broadway and Imperial Wharf. There is a selection of bus routes on Imperial Road leading into the city and Sloane Square.

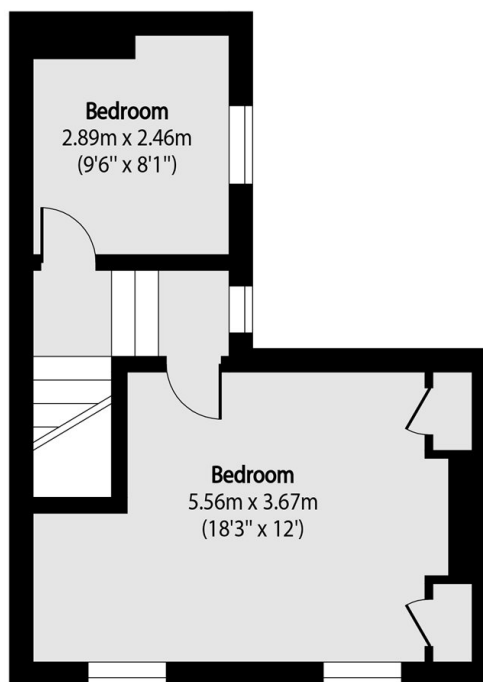
### Features

- Two Double Bedrooms
- Separate Reception
- Eat In Kitchen
- Family Bathroom
- Front and Rear Garden
- Good Storage

# Imperial Square, Fulham, SW6



Ground Floor



First Floor

Total area (approx): 74.66 sq m (804 sq. ft)