

OFFERS IN THE REGION OF

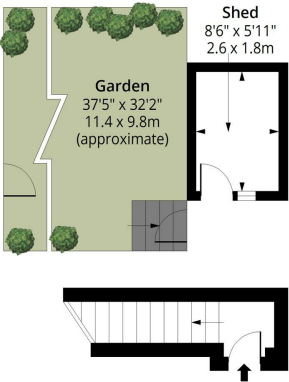
£440,000

Vernon Crescent

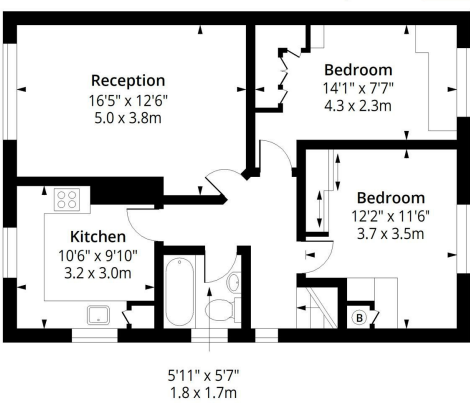
Barnet, EN4 8QQ

EPC RATING: C COUNCIL TAX BAND: D

Vernon Crescent, EN4
Approx. Gross Internal Area 726 Sq Ft - 67.45 Sq M
Approx. Gross Shed Area 50 Sq Ft - 4.65 Sq M



Ground Floor Entrance
Floor Area 44 Sq Ft - 4.09 Sq M



First Floor
Floor Area 682 Sq Ft - 63.36 Sq M



Measured according to RICS IPMS2. Floor plan is for illustrative purposes only and is not to scale. Every attempt has been made to ensure the accuracy of the floor plan shown, however all measurements, fixtures, fittings and data shown are an approximate interpretation for illustrative purposes only. 1 sq m = 10.76 sq feet. Date: 5/2/2026
lpaplus.com



Energy Efficiency Rating		
	Current	Potential
Very energy efficient - lower running costs		
(92 plus) A		
(81-91) B		
(69-80) C		
(55-68) D		
(39-54) E		
(21-38) F		
(1-20) G		
Not energy efficient - higher running costs		
England & Wales	76	78
EU Directive 2002/91/EC		



Agents Note: Whilst every care has been taken to prepare these particulars, they are for guidance purposes only. All measurements are approximate and are for general guidance purposes only and whilst every care has been taken to ensure their accuracy, they should not be relied upon and potential buyers/tenants are advised to recheck the measurements.

Christopher Mark
ESTATE AGENTS

OFFICE ADDRESS
25 Heddon Court Parade
London
EN4 ODB

OFFICE DETAILS
02033 690989
Hello@christophermark.co.uk