

# Parkheath

*Sold on Service*

## Grafton Yard NW5 £2,850 PCM (£658 per week) - Camden Band F



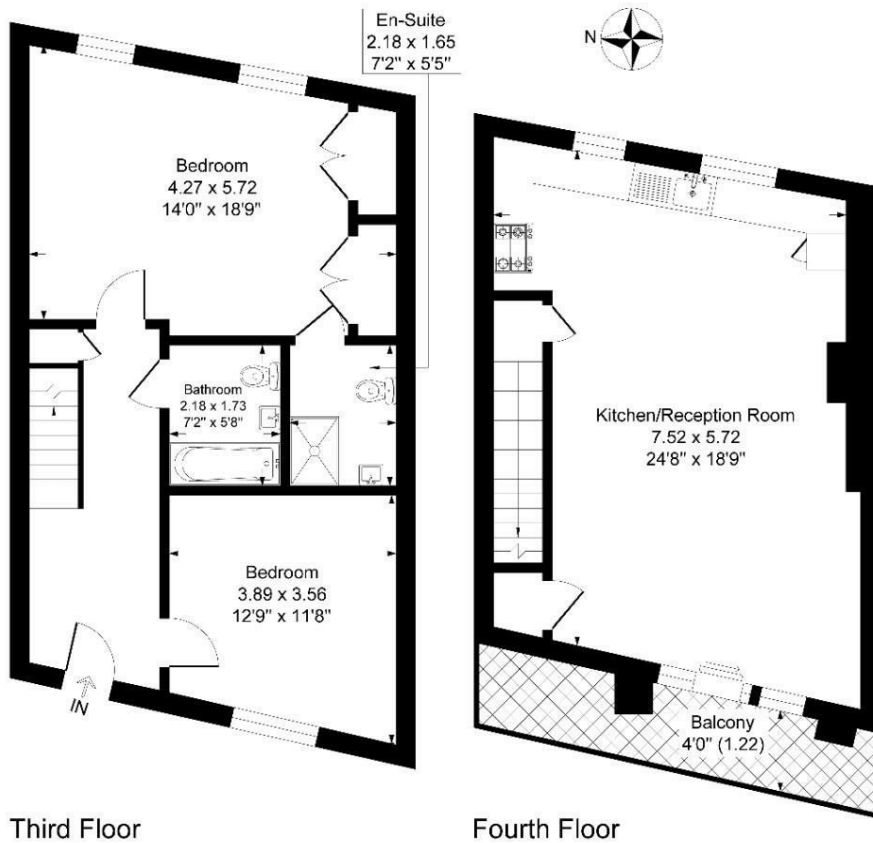
Impressive loft style apartment with balcony  
Very spacious reception  
Impressive main bedroom with en suite shower room  
3 piece bathroom  
Moments to tube and overground station

2nd and 3rd floors in modern development with lift  
Open plan kitchen with all appliances  
Good size 2nd double bedroom  
Perfectly located for Kentish Town amenities  
EPC Rating C, Council Tax: Camden band F

Belsize Park Office 020 7431 3104

## Grafton Yard Kentish Town, London, NW5

Approximate Gross Internal Floor Area = 99.9 sq m / 1076 sq ft



Third Floor

Fourth Floor

Illustration for identification purposes only, measurements are approximate, not to scale.

The particulars do not constitute part of an offer or contract. The particulars, including text, photographs and plans, are for the guidance only of prospective purchasers/tenants and must not be relied upon as statements of fact. The descriptions provided therein represent the opinion of the author and whilst given in good faith should not be construed as statements of fact. Nothing in these particulars shall be deemed a statement that the property is in good condition or otherwise or that any services or facilities are in good working order. All measurements are approximate