



Connells
connells.co.uk 02380 618 343
FOR SALE

Connells

Pilgrim Place
Southampton



Property Description

Nestled in the popular area of Swaythling, this spacious and well-presented three-bedroom family home offers generous living accommodation, excellent outdoor space, and fantastic transport links to Eastleigh, Southampton and Winchester.

To the front, the property benefits from on-road parking, an attractive front garden, and useful side access.

Upon entering, the welcoming entrance hall leads through to a bright and comfortable lounge, perfect for relaxing with the family.

The heart of the home is the modern kitchen/diner featuring French doors opening onto the rear garden, an integral oven, breakfast bar, utility area, and a convenient downstairs cloakroom - ideal for modern family living and entertaining alike.

Upstairs offers three well-proportioned bedrooms alongside a stylish four-piece family bathroom complete with a corner bath and separate shower.

Externally, the rear garden is designed for both enjoyment and practicality, boasting a decking area, lawn, and a substantial summer house which would make an excellent home office, workshop, or hobby space.

Conveniently located close to local amenities, schools, and excellent travel connections, this wonderful home is perfectly suited for growing families and commuters alike.

Entrance Hall

PVC door to front aspect. Double glazed window to front aspect. Radiator.

Cloakroom

Double glazed window to rear aspect. Toilet.

Lounge

Double glazed window to front aspect. Radiator. TV port..

Kitchen Diner

Double glazed patio doors to garden. Modern fitted kitchen with wall and base units. Fitted gas hob, electric oven and extractor fan. Sink and drainer set in to work top. Space for fridge freezer. Space for washing machine. Radiator. Breakfast bar.

Utility Room

Double glazed window to side aspect. Boiler on wall.

Landing

Stairs from hallway upto landing. Loft access.

Bedroom 1

Double glazed window to front aspect. Radiator. TV port.

Bedroom 2

Double glazed window to rear aspect. Radiator.

Bedroom 3

Double glazed window to front aspect. Radiator.

Bathroom

Double glazed window to rear aspect. Corner bath with mixer taps. Shower cubicle. Vanity sink and unit. Toilet. Tiled.

Outside

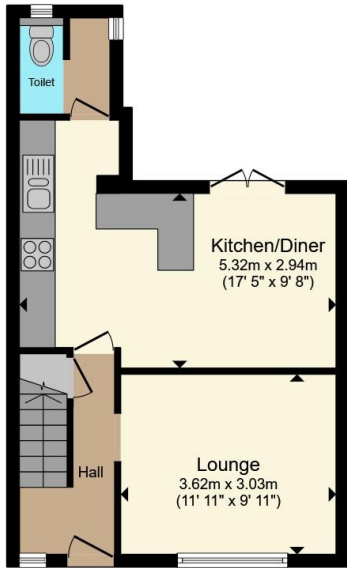
To the front. On road parking. Picket fence around front garden. Path to front door. Lawn area. Side access.

To the rear. Decking area, Lawn area. Summer house.

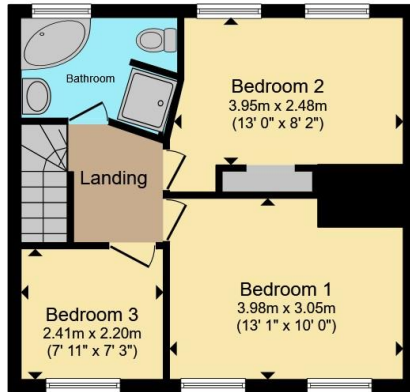
Outbuilding

Large summer house in rear garden, ideal workshop or home office.

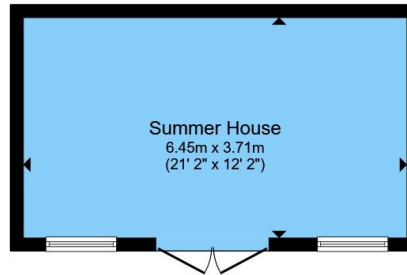




Ground Floor



First Floor



Outbuilding



Total floor area 100.0 m² (1,077 sq.ft.) approx

This floor plan is for illustrative purposes only. It is not drawn to scale. Any measurements, floor areas (including any total floor area), openings and orientation are approximate. No details are guaranteed, they cannot be relied upon for any purpose and they do not form part of any agreement. No liability is taken for any error, omission or misstatement. A party must rely upon its own inspection(s). Powered by www.propertybox.io



To view this property please contact Connells on

T 02380 618 343
E eastleigh@connells.co.uk

19 Market Street
 EASTLEIGH SO50 5RH

EPC Rating: D Council Tax
 Band: C

view this property online connells.co.uk/Property/EGH309669

Tenure: Freehold



1. MONEY LAUNDERING REGULATIONS Intending purchasers will be asked to produce identification documentation at a later stage and we would ask for your co-operation in order that there will be no delay in agreeing the sale. 2. These particulars do not constitute part or all of an offer or contract. 3. The measurements indicated are supplied for guidance only and as such must be considered incorrect. Potential buyers are advised to recheck measurements before committing to any expense. 4. We have not tested any apparatus, equipment, fixtures, fittings or services and it is in the buyers interest to check the working condition of any appliances.

Connells Residential is registered in England and Wales under company number 1489613, Registered Office is Cumbria House, 16-20 Hockliffe Street, Leighton Buzzard, Bedfordshire, LU7 1GN. VAT Registration Number is 500 2481 05.

See all our properties at www.connells.co.uk | www.rightmove.co.uk | www.zoopla.co.uk

Property Ref: EGH309669 - 0004