



Hogarth Close, W5

£1,199,950

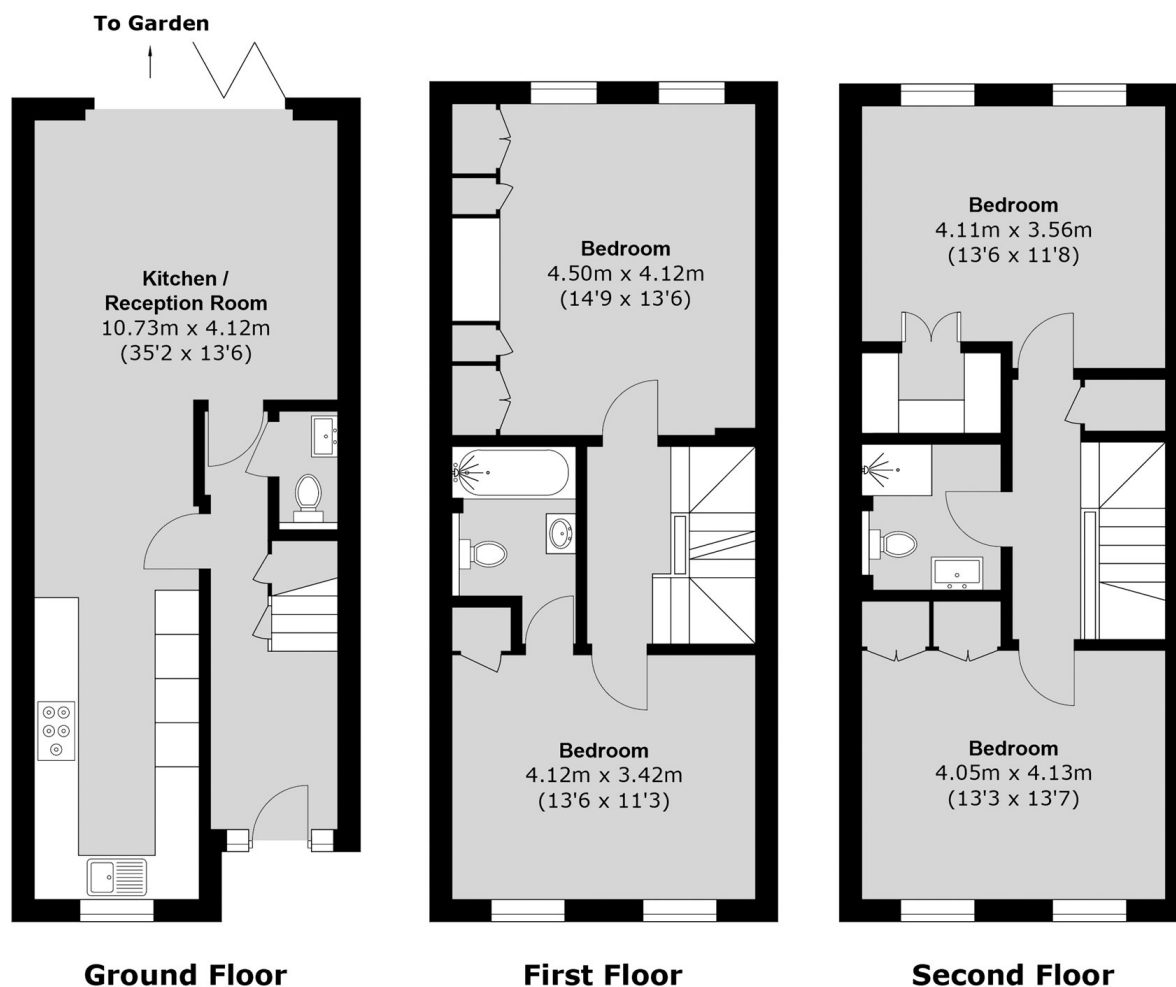
This beautifully renovated four double bedroom, two-bathroom townhouse is presented to an exceptional standard throughout. Arranged over three floors, the property offers spacious family accommodation, off-street parking with EV charging to the front, and a private south-facing rear garden.

Set within a quiet cul-de-sac less than a mile from Ealing Broadway station (Elizabeth line, London Underground Central line and London Underground District line), with Hanger Lane station and Park Royal station also nearby. The property is a short walk to Ada Lovelace Church of England High School and close to excellent local schools including Montpelier Primary School and St Augustine's Priory.

Features

- Four Double Bedrooms
- Two Bathrooms
- Newly Modernised
- Close To Schools
- Off Street Parking with EV Charging
- South Facing Garden

Hogarth Close, London, W5



Total area (approx.): 131.2 sq. m (1,412.2 sq. ft)