



Willesden Lane, NW2

£3,000 Per Month

AVAILABLE TO LET is this bright and spacious three bedroom Top Floor Flat, situated in the heart of Willesden Green.

- AVAILABLE TO LET - FURNISHED
- Spanning 1007 sq ft of accommodation
- Three double bedrooms and two bathrooms
- Transport links: Willesden Green (Jubilee-Zone 2)
- Council: Brent (C)
- Deposit: £3,461
- Close to the amenities of Walm Lane
- Early viewing is highly recommended

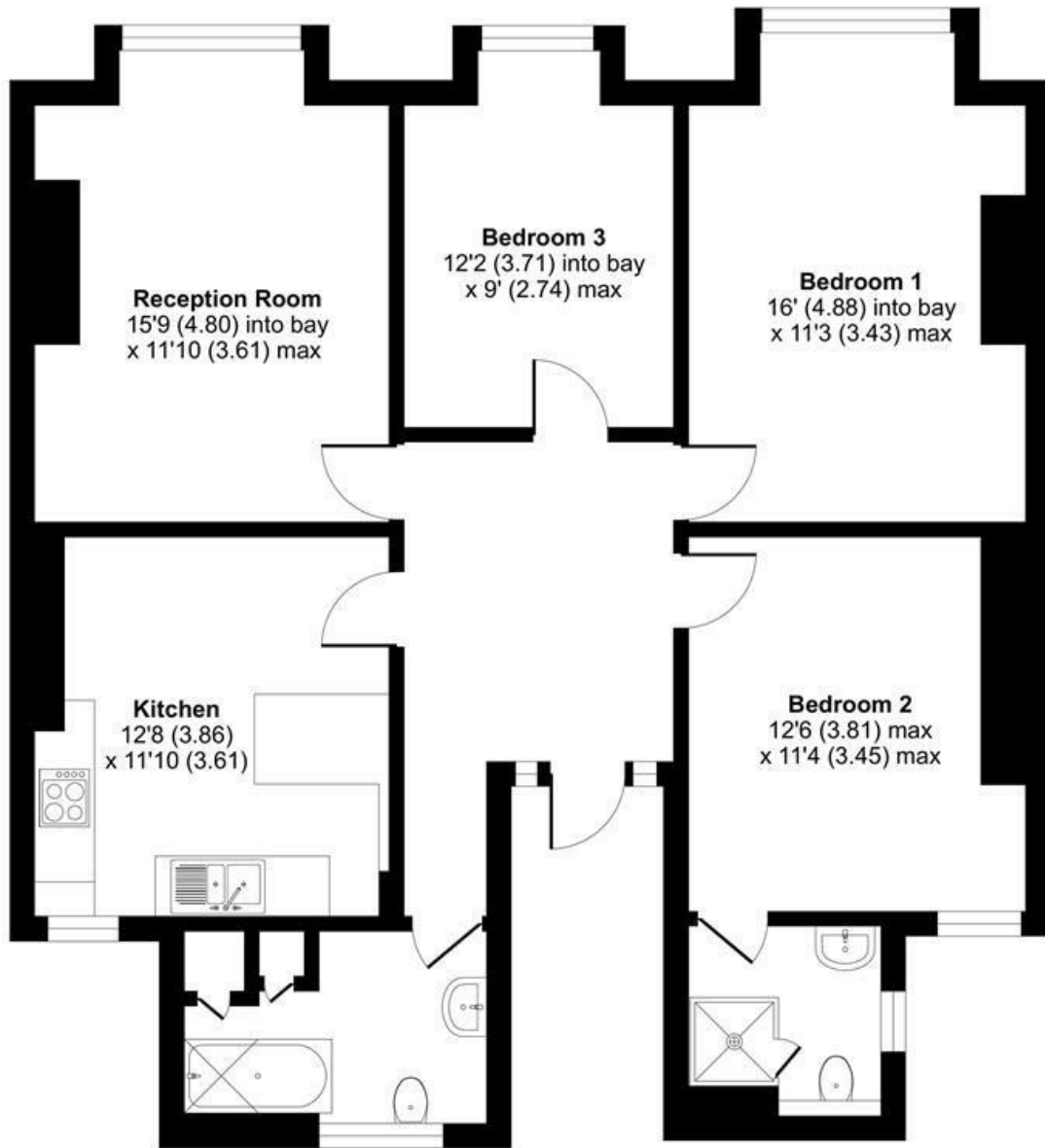


020 8450 9377 - 020 8459 1133
rentals@cameronsstiff.co.uk

Willesden Lane, London, NW2

Approximate Area = 1007 sq ft / 93.6 sq m

For identification only - Not to scale



THIRD FLOOR



Floor plan produced in accordance with RICS Property Measurement Standards incorporating International Property Measurement Standards (IPMS2 Residential). © n'che.com 2022. Produced for Camerons Stiff & Co. REF: 832654

EPC: D

Ref: 19725812

