



Choumert Road, SE15

£600,000

This lovely two bedroom Victorian conversion maisonette is full of character and benefits from its own private front door as well as a spacious south facing garden, creating a real sense of independence and house like living.

Ideally positioned for the independent shops, bars and restaurants and the characterful Bellenden Road, sits just moments away.

Peckham Rye Station is just a few minutes away, creating fast connections to London Bridge, Victoria and The City.

Features

- Two Bedroom
- Victorian Conversion
- South Facing Garden
- Split Level
- Share of Freehold
- Chain Free



Choumert Road, SE15

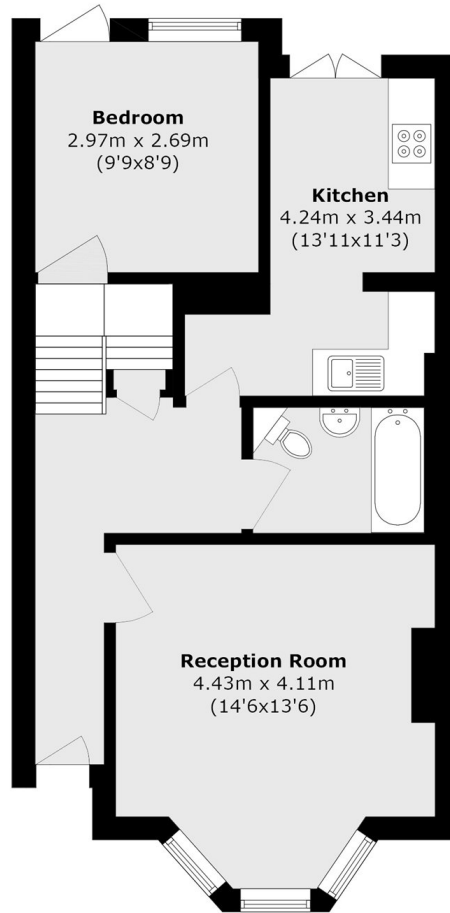
Set across the lower and raised ground floor, the home offers a welcoming reception and dining space, perfect for everyday living and entertaining. A separate fitted kitchen sits to the rear, with direct access to the garden, while two comfortable bedrooms and a well appointed bathroom to complete the accommodation. One of the bedrooms also opens directly onto the garden, bringing in plenty of natural light and a wonderful connection to the outdoors.

The standout feature is the exceptionally large private garden, a rare find for a period conversion in this location. Whether you enjoy hosting friends, spending time outdoors or simply having a peaceful green space to retreat to, this garden offers huge potential.

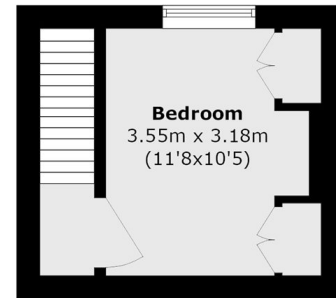
Offered chain free, the property would suit buyers looking for a smooth and straightforward purchase, either as a long term home or a smart investment.



Choumert Road, London, SE15



Ground Floor



First Floor

Total area (approx.): 61.0 sq. m (656.6 sq. ft)