

KE



1a Bognor Drive, Herne Bay, Kent, CT6 8QP

£210,000

- Chain Free Sale
- Lovely, Private Rear Garden
- Perfect First Time Buy
- Close To Seafront, Shops And Railway Station
- Nicely Presented Throughout
- Planning Permission Granted For A Single Storey Extension. Canterbury City Council Ref: CA/24/01933

1a Bognor Drive, Herne Bay CT6 8QP

CHAIN FREE SALE.

This delightful ground floor apartment presents an excellent opportunity for those seeking a coastal retreat. The property boasts its own sunny garden, perfect for enjoying the warm summer days or hosting gatherings with friends and family.

One of the standout features of this home is its enviable location, just a stone's throw from the beach, allowing for leisurely strolls along the seafront and the chance to embrace the vibrant coastal lifestyle. Additionally, the nearby railway station offers high-speed links to London, making it an ideal choice for commuters or those who wish to explore the capital with ease.

This property is being offered for sale chain free, providing a smooth and straightforward purchasing process. We are advised by our sellers that there is 130 years remaining on the lease, you can enjoy peace of mind knowing that this home has a long and secure future ahead.

Whether you are a first-time buyer, a downsizer, or looking for a holiday home, this ground floor apartment in Herne Bay is a wonderful opportunity not to be missed. Embrace the coastal living experience and make this charming property your own.



Council Tax Band:



Ground Floor

Communal Entrance Hall

Bedroom One

15'3 x 11'2

Lounge-Diner

15'3 x 11'2

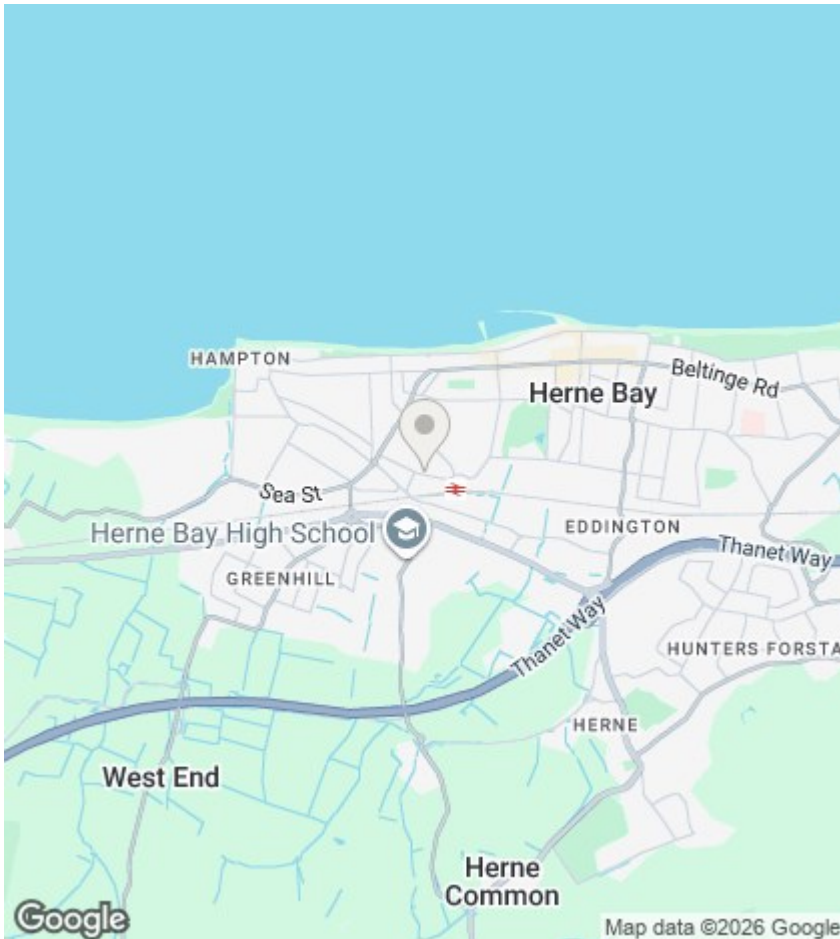
Kitchen

13'5 x 7'1

Bathroom

Outside

Rear Garden



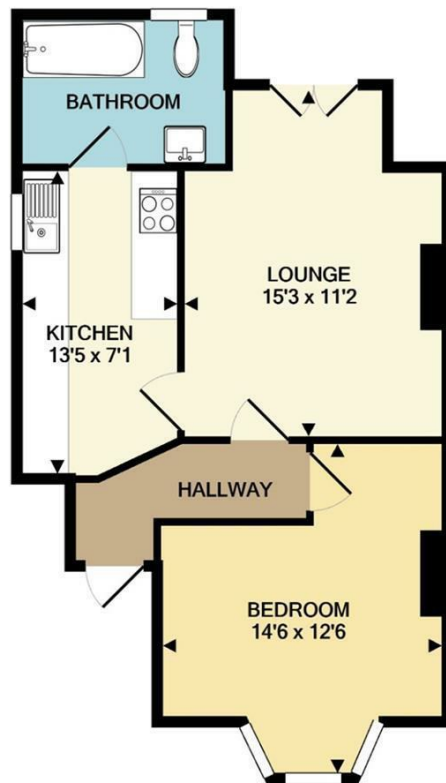
Viewings

Viewings by arrangement only. Call 01227 389 998 to make an appointment.

EPC Rating:

D

Energy Efficiency Rating		Current	Potential
Very energy efficient - lower running costs			
(92 plus) A			
(81-91) B			
(69-80) C			
(55-68) D		64	75
(39-54) E			
(21-38) F			
(1-20) G			
Not energy efficient - higher running costs			
England & Wales		EU Directive 2002/91/EC	



TOTAL APPROX. FLOOR AREA 479 SQ.FT. (44.5 SQ.M.)
 Measurements are approximate. Not to scale. Illustrative purposes only
 Made with Metropix ©2021