



Price
£315,000

Freehold

4x  1x  3x 

**St. Peter's Grove,
Southsea, Hampshire,
PO5**

OVER 60?

Secure this property
for up to **59% less!**

cubitt & west
Helping you move forwards



Main features

- Chain free
- Ideal family home
- Ready for a buyer to put their own stamp on
- Central Southsea location
- Previously used as a HMO

Accommodation

GROUND FLOOR

- Entrance Hallway
- Lounge: 12'10 x 10'11 (3.91m x 3.33m)
- Dining Room: 12'11 x 10'0 (3.94m x 3.05m)
- Cloakroom
- Breakfast Room: 11'11 x 10'8 (3.63m x 3.25m)
- Kitchen: 11'1 x 10'0 (3.38m x 3.05m)
- Separate Toilet

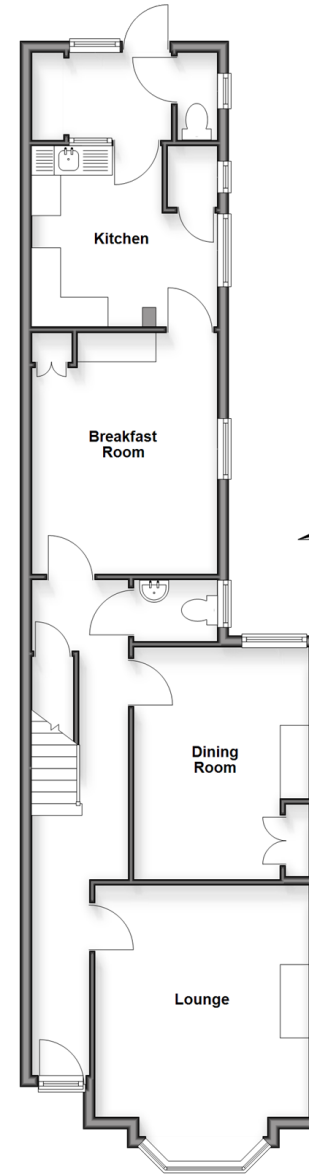
FIRST FLOOR

- Landing
- Bedroom 1: 14'11 x 12'11 (4.55m x 3.94m)
- Bedroom 2: 12'10 x 8'9 (3.91m x 2.67m)
- Bedroom 3: 10'8 x 9'5 (3.25m x 2.87m)
- Bedroom 4: 10'8 x 8'10 (3.25m x 2.69m)
- Bathroom

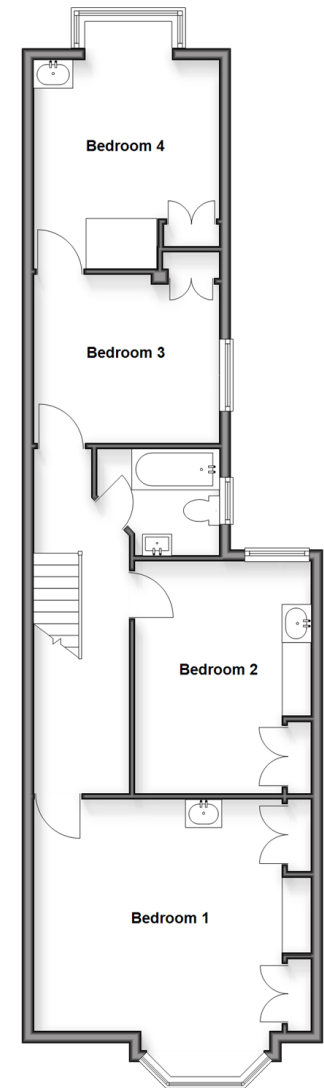
OUTSIDE

- Rear Garden
- Front Forecourt

Ground Floor
Approx. 70.8 sq. metres (762.2 sq. feet)



First Floor
Approx. 67.5 sq. metres (726.8 sq. feet)



Call Southsea - 023 9229 6396 ■ cubittandwest.co.uk

- Legal advice should be taken to verify fixtures/fittings, planning, alterations and/or lease details
- Appliances & services are untested, dimensions are approximate and floor plans are not to scale
- Through a Homewise Home For Life Plan people aged 60+ can secure this property for up to 50% less, by purchasing a Lifetime Lease.



42227500/20251114/JT/YH