



Russell Road, CR4

£500,000

* Share Of The Freehold * A large duplex three bedroom maisonette with two bathrooms, a separate W.C, as well two balconies and an allocated parking space. There is a high specification throughout, including an attention to energy efficiency including underfloor heating and modern boiler. A further benefit of this development is a low service charge, as well as share of the freehold for all residents.

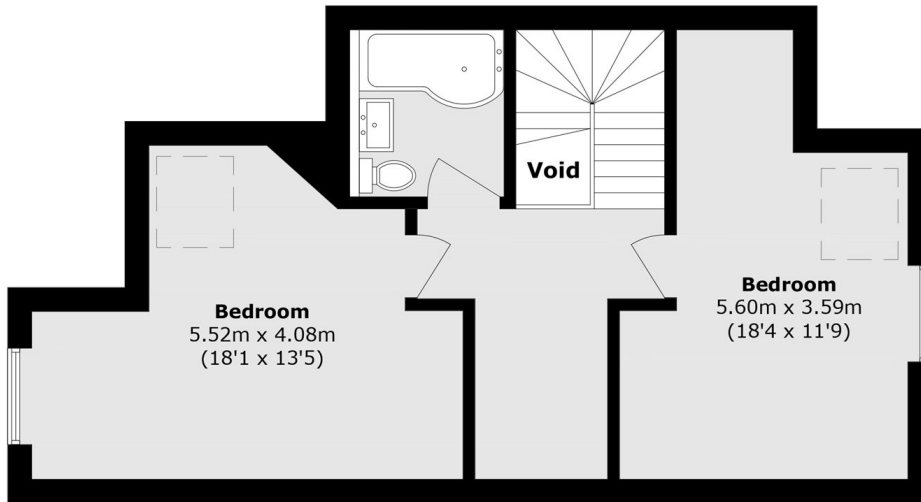
*Images may be of another flat within the same development for representative purposes *

Century House is a small boutique development of just nine apartments, all with a share of the freehold. Tucked away on Russell Road, with Wimbledon and Tooting nearby by car. The wide green open spaces of Mitcham Common is also just a short walk away with it's open grassy space, wooded areas and ponds, plus various trails for walking and running.

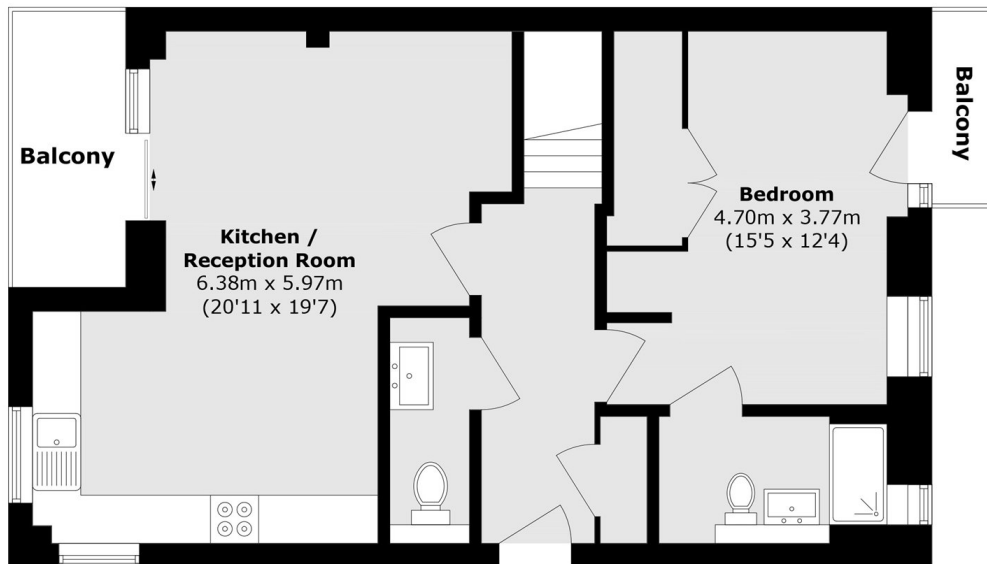
Features

- Three Bedrooms
- Two Bathrooms
- First & Second Floor Duplex
- Own Front Door
- Private Balcony
- Communal Garden
- Share Of The Freehold
- Underfloor Heating
- Energy Efficient Boiler
- Allocated Parking Space

Russell Road, Mitcham, CR4



Second Floor



First Floor

Total area (approx.): 116.7 sq. m (1256.1 sq. ft)
Balcony area (approx.): 6.3 sq. m (67.8 sq. ft)
(Excluding Void)