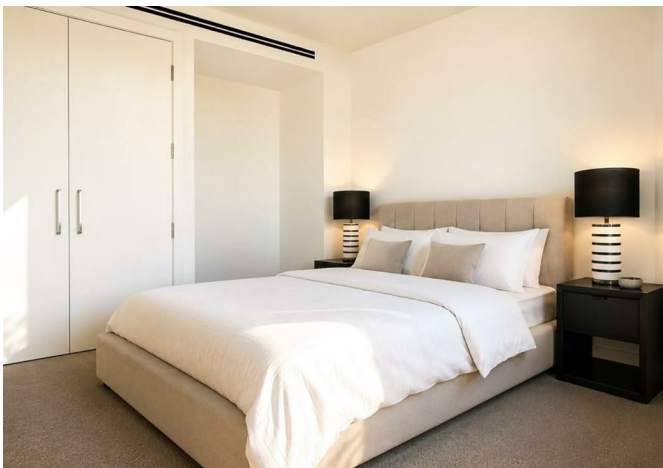




Marsh Wall, London, E14 9ZN  
**£4,116 Per month**



## Marsh Wall, London, E14 9ZN

£4,116 Per month

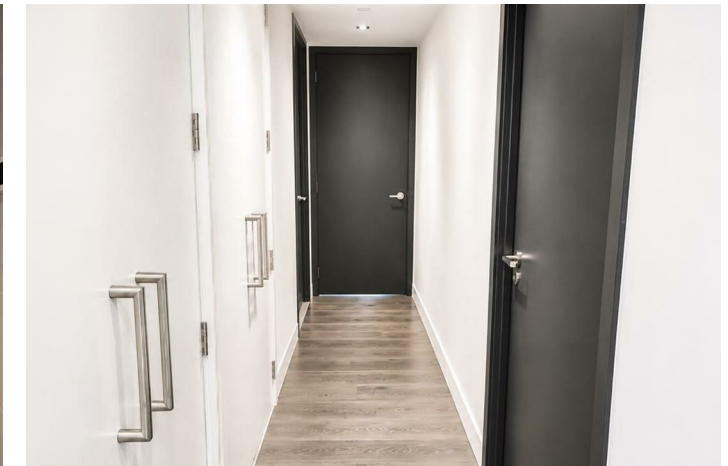
Nestled in the vibrant area of Marsh Wall, London, this contemporary house offers a perfect blend of modern living and convenience. Spanning an impressive 807 square feet, the property boasts a well-designed layout that includes one spacious reception room, ideal for both relaxation and entertaining guests.

The house features two comfortable bedrooms, providing ample space for a small family or professionals seeking a home office. With two bathrooms, morning routines will be a breeze, ensuring privacy and comfort for all occupants.

This house is not just a place to live; it is a lifestyle choice, offering modern comforts in a thriving community. Whether you are looking to buy or rent, this property presents an excellent opportunity for those seeking a stylish and practical home in one of London's most sought-after areas.

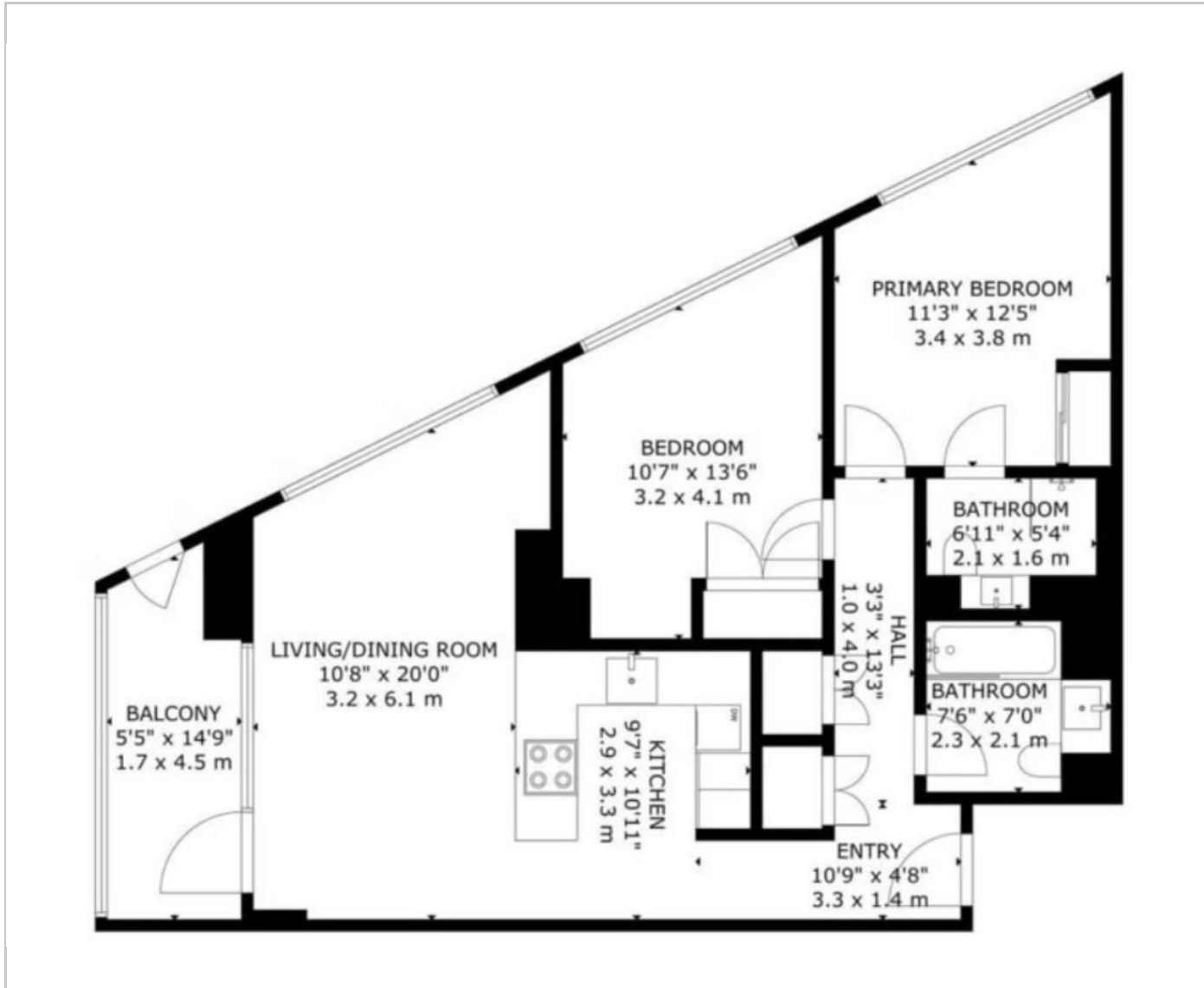
## Key Features

- Stunning two bedrooms, two bathrooms
- Amazing Views
- Concierge
- Gym
- Spa
- Residents Bar
- Walking Distance to Canary Wharf Underground ands ELizabeth Line Stations
- Moments away from South Quay DLR Station
- Close to Local Amenities and Shops

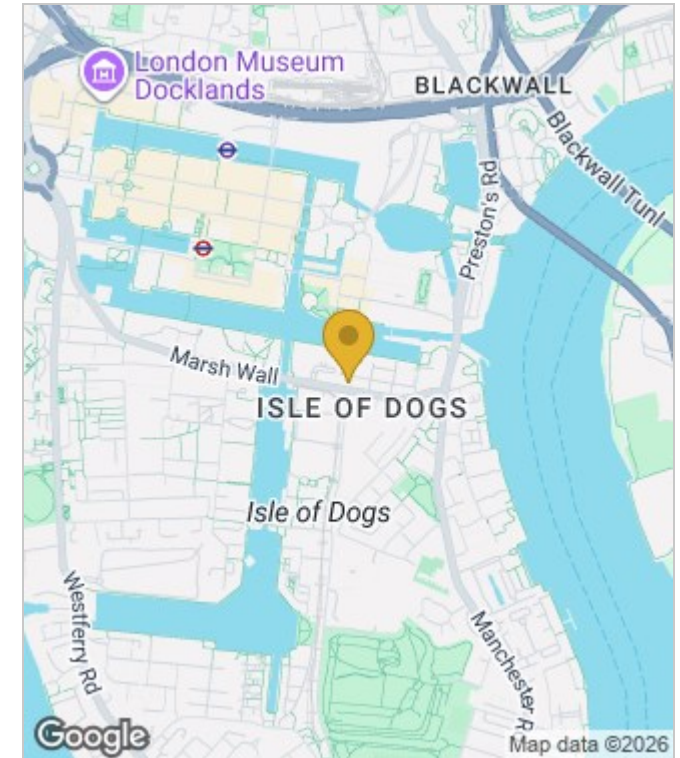


Council Tax Band: F

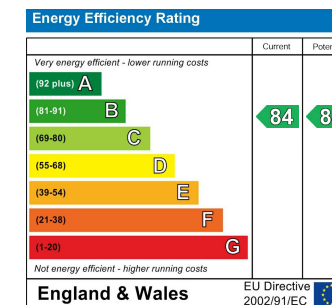
## Floor Plans



## Area Map



## Energy Performance Graph



These particulars, whilst believed to be accurate are set out as a general outline only for guidance and do not constitute any part of an offer or contract. Intending purchasers should not rely on them as statements of representation of fact, but must satisfy themselves by inspection or otherwise as to their accuracy. No person in this firm's employment has the authority to make or give any representation or warranty in respect of the property.