

## 2 Perth Grove, Offers Over £625,000

4 3 3



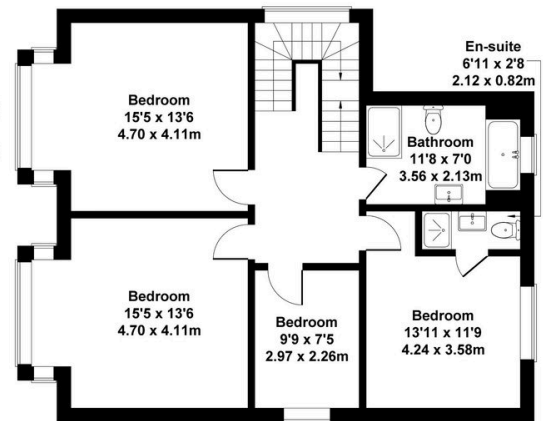
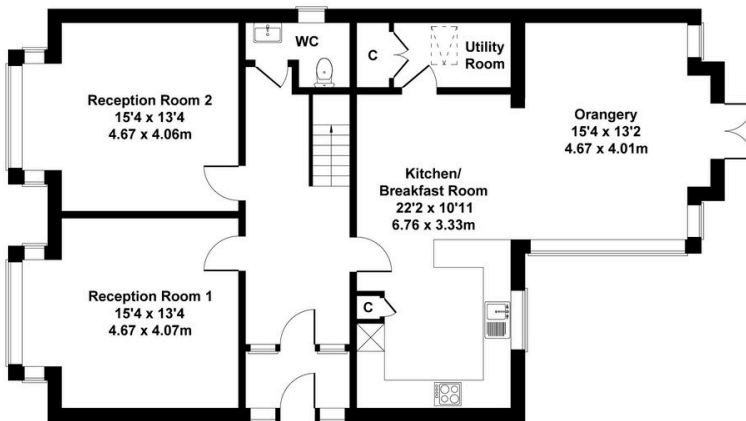
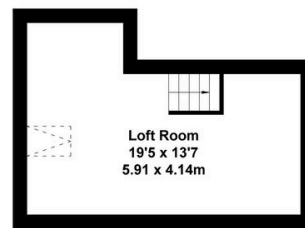
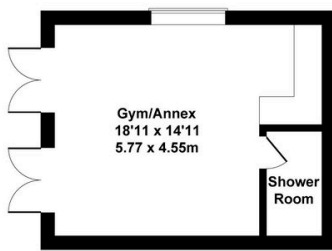
**The Yorkshire Property Agency** is delighted to introduce this fabulous four-bedroom family home located in the popular Stockton village of Hartburn. Boasting a stylish high-spec finish and a substantial corner plot, early viewings are advised.

## Key Features

- Stunning period family home
- Three reception-rooms
- Off-street parking
- incredible period features throughout
- Great location for local amenities
- Four-bedrooms
- Substantial wrap-around plot
- Annexe with kitchen and bathroom facilities
- Car storage
- Council tax band C

### 2 Perth Grove, Stockton-On-Tees

Approximate Gross Internal Area  
2454 sq ft - 228 sq m



Not to Scale. Produced by The Plan Portal 2026  
For Illustrative Purposes Only.