



Berkeley Crescent, EN4

£775,000

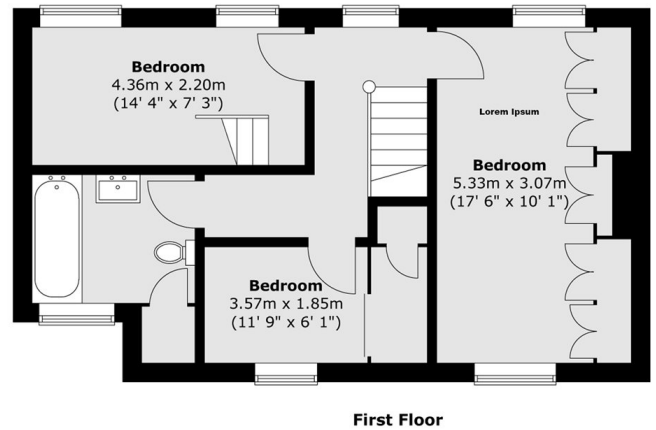
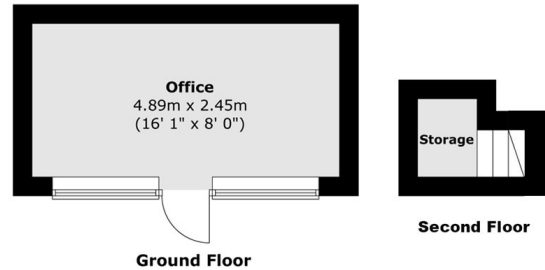
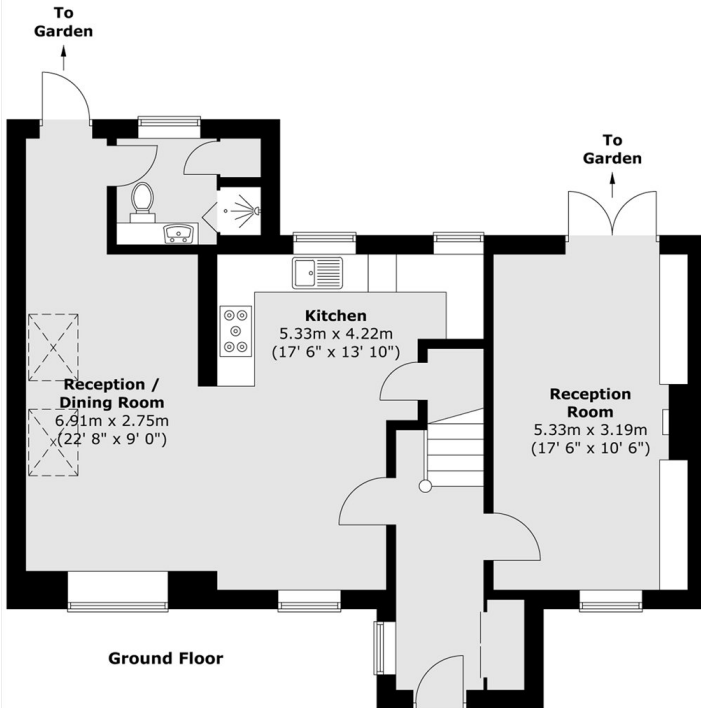
Available for an open day on 23rd May, this spacious end-of-terrace, three bedroom family home has been completely renovated by its current owners to a high standard throughout. Benefitting from a generously sized driveway, the additional installation of an office pod in the South-West facing garden provides an excellent bonus for its next owner.

Located by the entrance of a quiet cul-de-sac, the house is conveniently 0.2 miles from East Barnet Village, where you can find a wide selection of local shops and amenities. You will also find great access into the City (Moorgate), which is accessed by either New Barnet (0.5 miles) or Oakleigh Park (0.6 miles).

Features

Open Day 23rd May
South-West Facing Garden
Three Bedrooms
Two Bathrooms
Driveway Parking
Office Pod

Berkeley Crescent, Barnet, EN4



Total area (approx.) : 117.5 sq. m (1265 sq. ft)
Total office area (approx.) : 12.2 sq. m (132 sq. ft)