



32 Lower Pastures

Corby, NN18 8JJ



Simpson West

Enjoying an attractive position within the much sought after Great Oakley, is this rarely available detached residence which is being offered for sale with NO CHAIN. The property provides accommodation to include a reception hall, cloakroom/WC, living room, conservatory, and a fitted kitchen/breakfast room. The first floor provides THREE BEDROOMS and a refitted shower room. Outside, an easy maintenance block paved frontage provides OFF ROAD PARKING for THREE VEHICLES and there is also a GARAGE with an electric roller door. The rear garden is of excellent size, predominately laid to lawn and is highly established, in our opinion this lovely garden is a particular feature of the property due to its well maintained borders and privacy. Also including a private sheltered pergola area and a home office/hobbies room is set to the rear boundary. An early visit is highly advised. Energy Rating C. Council Tax Band C.

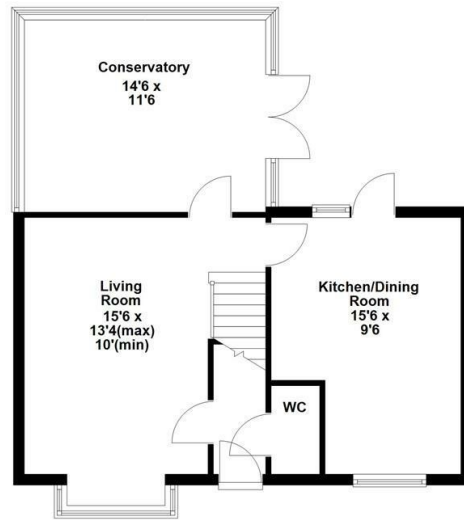
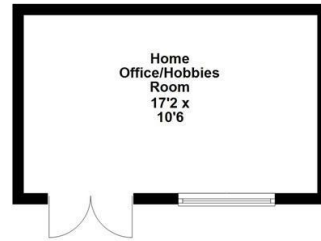


£299,950

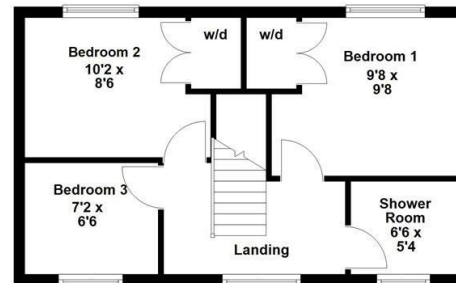
3 1 1



Ground Floor



First Floor



Energy Efficiency Rating

	Current	Potential
<i>Very energy efficient - lower running costs</i>		
(92 plus) A		
(81-91) B		
(69-80) C		
(55-68) D		
(39-54) E		
(21-38) F		
(1-20) G		
<i>Not energy efficient - higher running costs</i>		
England & Wales	71	77
	EU Directive 2002/91/EC	



When you buy with Simpson West, you know **you'll be in safe hands**. From the moment you walk through our doors, we'll make you **feel truly welcome**. Our sales consultants and financial advisors will take you through **every step of the process**, offering **free expert advice** along the way, from help choosing the right mortgage and insurance through to finding your conveyancer. And if you need help selling your home too, **with over 20 years of local experience, you can trust us to get you moving**.



**Simpson
West**

Making Every
Journey Personal



01536 202007

info@simpsonwest.co.uk

<https://www.simpsonwest.co.uk/>

64 Corporation Street, Corby, Northants, NN17 1NH