



92 Brunswick Road, Ipswich

Offers Over **£250,000**

**Woodcock
& Son**



92 Brunswick Road

Ipswich, Ipswich

Three-bedroom semi-detached home on Brunswick Road offering excellent potential to modernise. Features include two reception rooms, dining room, kitchen, utility room, garage, off-road parking and a good-sized garden backing onto playing fields.

Situated on Brunswick Road, Ipswich, this three-bedroom semi-detached home offers an excellent opportunity for buyers looking to modernise and personalise a property to their own taste.

The accommodation is well proportioned throughout and currently comprises an entrance hall, front lounge measuring approximately 11'6 x 11'7 with bay window, separate sitting room measuring 10'10 x 13'0, dining room measuring 11'7 x 7'6, fitted kitchen extending to over 16ft in length, utility room/lean-to, and an integral garage measuring 18'4 in depth

92 Brunswick Road

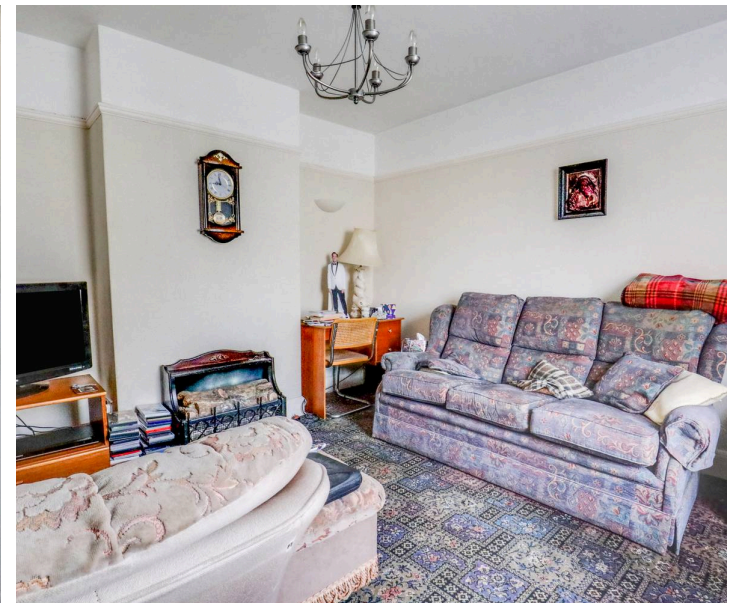
Ipswich, Ipswich

The first floor offers a particularly generous principal bedroom measuring 15'2 x 9'2, alongside a second double bedroom measuring 11'1 x 13'0, a single bedroom, family bathroom, and separate WC.

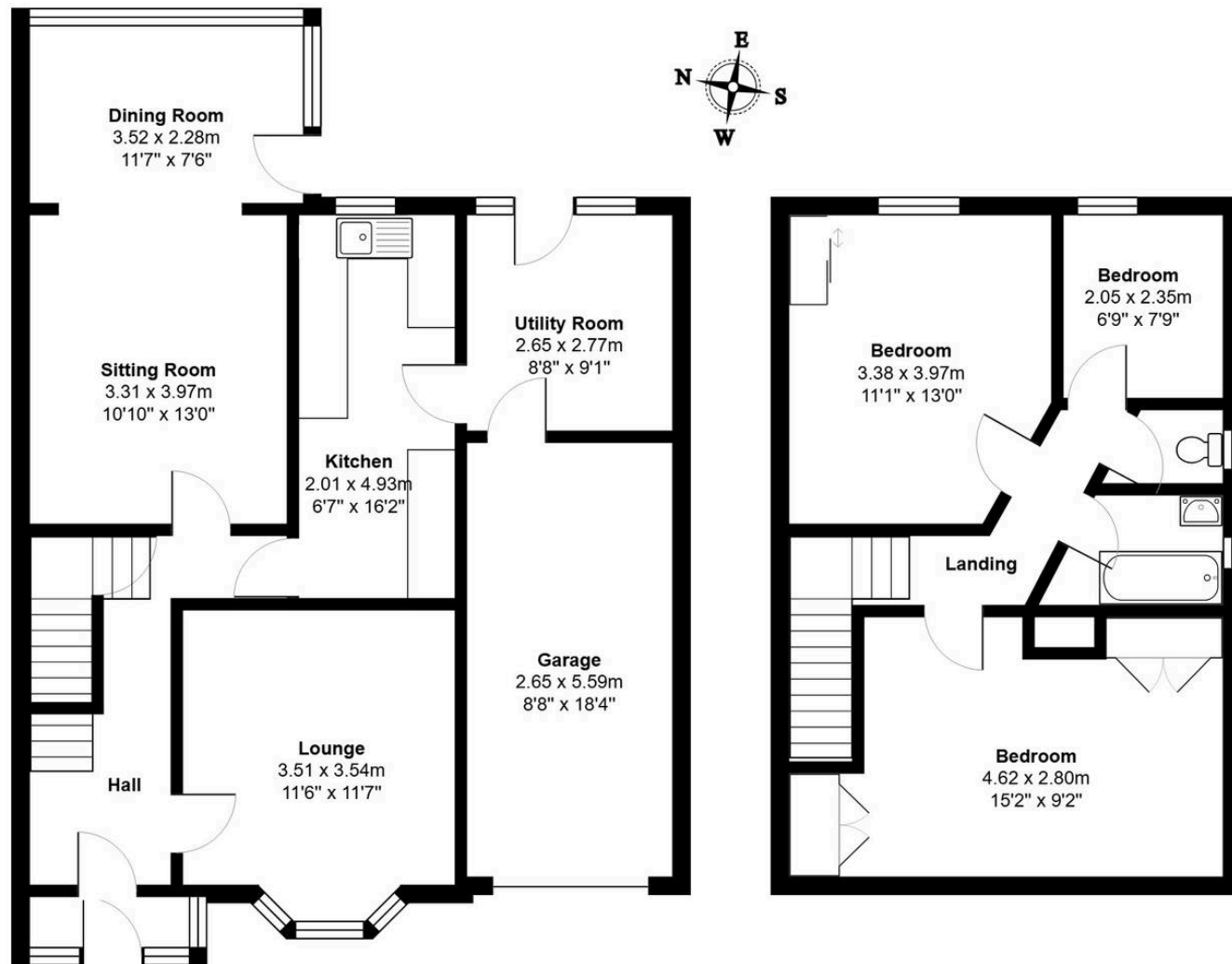
Externally, the property benefits from a good-sized rear garden backing onto the playing fields, incorporating a pond and useful external storage areas, together with off-road parking to the front.

Tenure - Freehold

EPC Rating - D







Total Area: 129.7 m² ... 1397 ft²



Woodcock & Son

Woodcock & Son, 16 Arcade Street - IPI 1EP

01473233355

enquiries@woodcockandson.co.uk

www.woodcockandson.uk

Woodcock
& Son