



Charleville Court
Charleville Road West
£2,150 Per Month



1



1



1



Charleville Court Charleville Road West

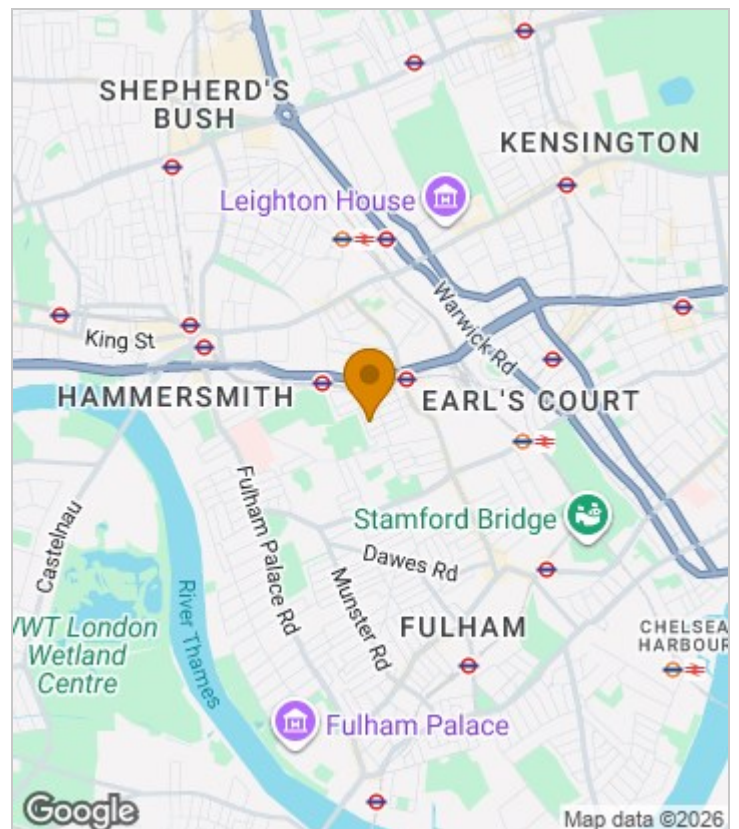
£2,150 Per Month



Summary Description

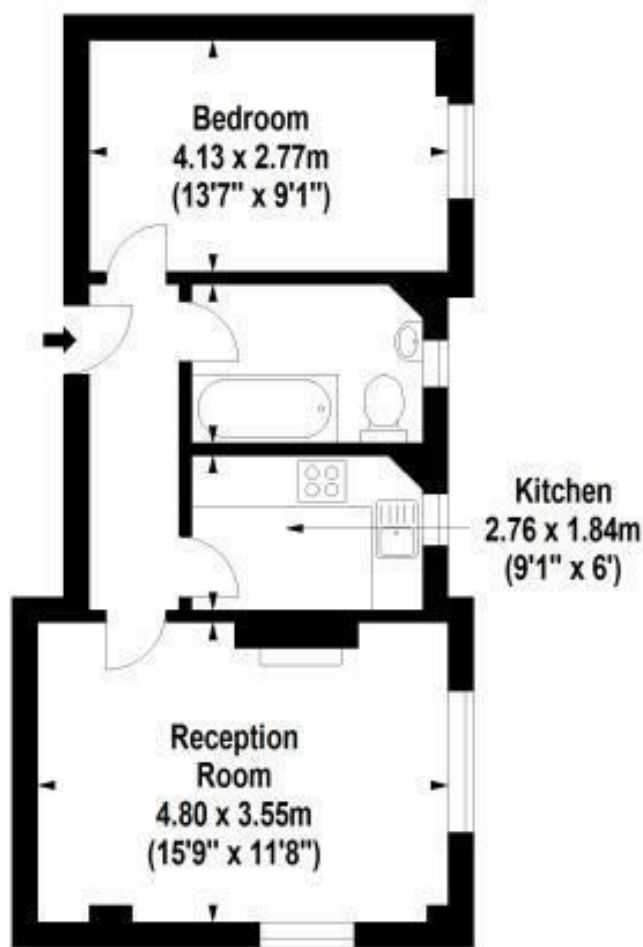
*** NEW TO THE MARKET *** Jorgensen Turner Estate Agents are proud to present this well-maintained and spacious one-bedroom flat, set within an attractive Art Deco building. The property features a separate modern kitchen, a clean white-suite bathroom, a generously sized double bedroom, and a bright living room. Ideally located just a short walk from both Barons Court and West Kensington tube stations, as well as local amenities. Offered part-furnished. Further benefits include double-glazed windows and wooden flooring throughout. Early viewings are highly recommended.

Area Map





Floor Plan



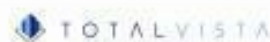
Ground Floor



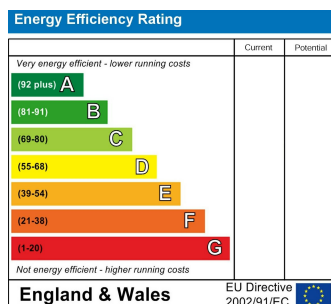
For Identification Purposes Only. Not To Scale. © www.totalvista.uk 2021

Charleville Court,
Charleville Road, W14

Approx. Gross Internal Area
44.03 Sq M - 474 Sq Ft



Energy Efficiency Graph



Viewing

Please contact our Lettings SB Office on 0208 740 8740 if you wish to arrange a viewing appointment for this property or require further information.

- X2 SHARERS CONSIDERED
- BRIGHT BEDROOM
- CLOSE TO TUBE STATIONS
- FUNCTIONAL KITCHEN
- ABUNDANT NATURAL LIGHT
- GOOD LOCATION
- OFFERED PART FURNISHED
- AVAILABLE END OF FEBRUARY

For further information contact:

Lettings SB, 234 Uxbridge Road, Shepherd's Bush, London, W12 7JD

Tel: 0208 740 8740 Email: enquiries@jorgensenturner.com

<https://www.jorgensenturner.com/>

Disclaimer

These particulars, whilst believed to be accurate are set out as a general outline only for guidance and do not constitute any part of an offer or contract. Intending purchasers should not rely on them as statements of representation of fact, but must satisfy themselves by inspection or otherwise as to their accuracy. No person in this firm's employment has the authority to make or give any representation or warranty in respect of the property.