



41 Produce Exchange Building

Victoria Street | Liverpool | L2 6QJ

Asking Price £77,900

The
GOOD
ESTATE
AGENCY

41 Produce

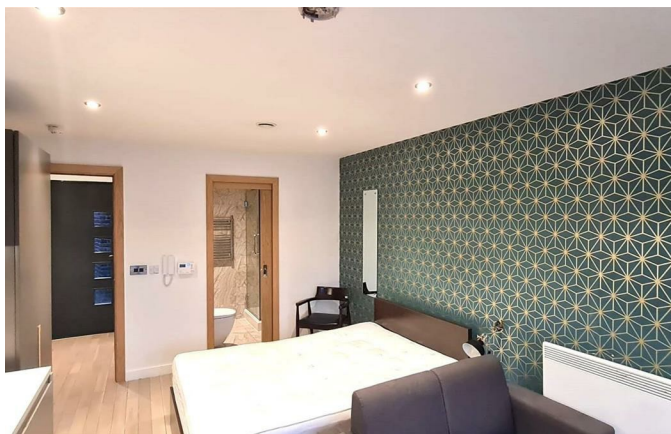
Victoria Street |

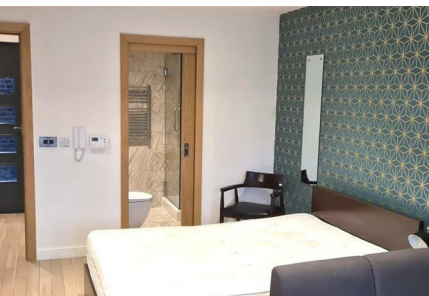
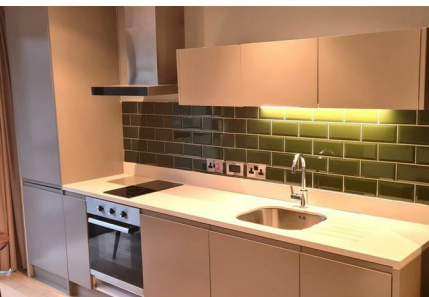
Liverpool | L2 6QJ

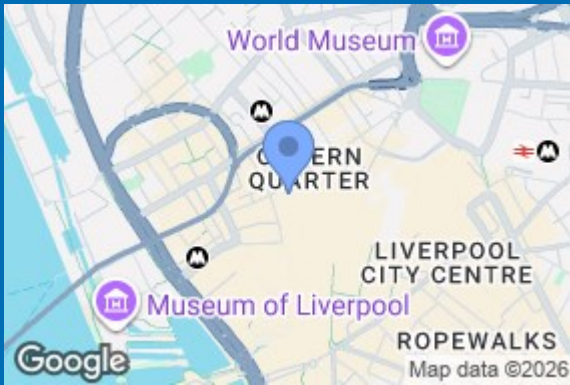
Asking Price £77,900

STUDIO APARTMENT. An excellent, modern studio apartment in a stunning period development, Produce Exchange Building. The 4th floor property, totalling 269 sq ft, comprises: entrance, open plan living and bedroom with fitted kitchen and house shower room. Built in 1902, The Produce Exchange is one of Liverpool's great commercial buildings, steeped in history and adorned with sumptuous architectural detail. Located in the heart of Liverpool city centre and a UNESCO World Heritage site, close to all the city's major attractions and amenities. Currently marketed for £695pcm, providing an excellent rental yield of 10.7%. Not suitable for wheelchair users.

- OPEN PLAN LIVING & BEDROOM
- FITTED KITCHEN
- 269 SQ FT
- ONE OF LIVERPOOL'S GREAT COMMERCIAL BUILDINGS
- CURRENTLY MARKETING FOR RENT AT £695PCM, EQUIVALENT TO AN EXCELLENT 10.7% RENTAL YIELD
- HOUSE SHOWER ROOM
- 4TH FLOOR
- STUNNING PERIOD DEVELOPMENT
- LOCATED IN THE HEART OF LIVERPOOL CITY CENTRE







Energy Efficiency Rating		
	Current	Potential
Very energy efficient - lower running costs		
(12 plus) A		
(81-91) B		
(69-80) C		
(55-68) D		
(39-54) E		
(21-38) F		
(1-20) G		
Not energy efficient - higher running costs		
England & Wales		
EU Directive 2002/91/EC		

68 Quay Street
Manchester
M3 3EJ
0161 513 2034
hello@thegea.co.uk
www.thegea.co.uk