

# Colin Dean Residential

in partnership with Dexters



## Sudbury Hill, HA1

£1,250 pcm

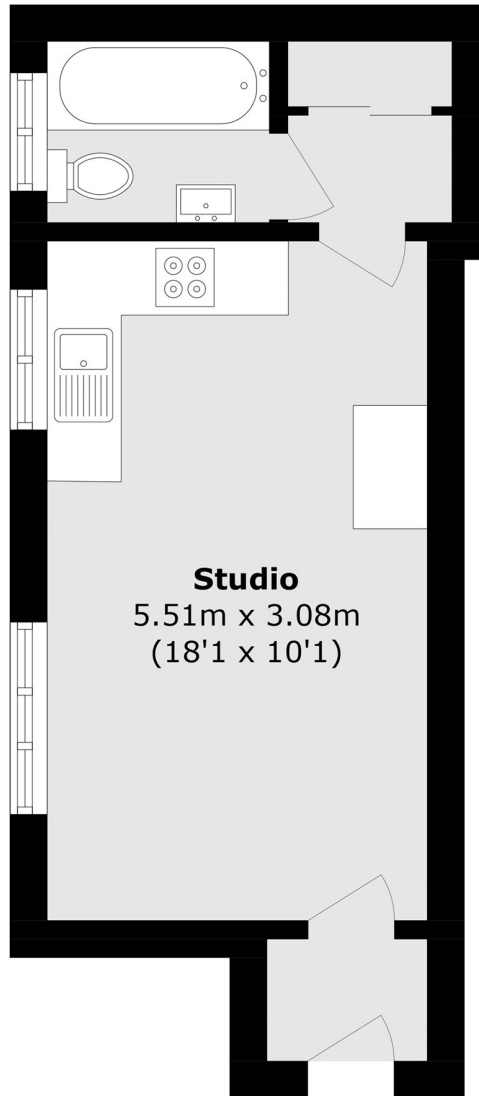
Bright and well-presented studio apartment, ideally located in a peaceful yet well-connected setting. The property features a spacious open-plan living area, a contemporary kitchen with integrated appliances and a sleek modern bathroom. Large windows allow plenty of natural light to flow throughout, creating a bright and inviting living space. Energy Rating: D.

Harrow on the Hill offers easy access to outstanding-rated schools and two popular shopping centres, St Anne's and St George's. Sudbury Hill Tube station (Piccadilly line) is just 0.7 miles away, providing convenient links into Central London.

- Studio Apartment • Open-plan • Modern Kitchen •
- Residents Parking • Central Location • Communal Grounds Including Tennis Courts •

# Colin Dean Residential

in partnership with Dexters



Total area (approx.): 23.7 sq. m (255.1 sq. ft)

Colin Dean Residential  
350 Pinner Road,  
Harrow, HA1 4LB  
020 8515 7929  
daniel.murray@colindean.com

Energy Rating: D We aim to make our particulars both accurate and reliable. However they are not guaranteed; nor do they form part of an offer or contract. If you require clarification on any points then please contact us, especially if you're travelling some distance to view. Please note that appliances and heating systems have not been tested and therefore no warranties can be given as to their good working order.