



**DM&Co.**  
— SALES & LETTINGS —

## **3 Dunham Croft Solihull, B93 8RZ**

Situated in a quiet cul-de-sac, this substantial detached family home offers an impressive living accommodation, perfect for modern family life. With no upward chain, this property is ready for you to move in and make it your own. This exceptional home combines comfort, style and practicality, making it an ideal choice for families seeking a peaceful yet convenient location.



## DETAILS

Your Text Here



## OUTSIDE

Your Text Here



## GENERAL INFORMATION

### Planning Permission & Building Regulations:

It is the responsibility of Purchasers to verify if any planning permission and building regulations were obtained and adhered to for any works carried out to the property.

**Tenure:** Freehold.

**Services:** All mains services are connected to the property. However, it is advised that you confirm this at point of offer.

**Local Authority:** Solihull Metropolitan Borough Council.

**Council Tax Band:** G.



## OTHER SERVICES

DM & Co. Homes are pleased to offer the following services:-

**Residential Lettings:** If you are considering letting your property, please contact the office on 0121 775 0101, Option 2.

**Mortgage Services:** If you would like advice on the best mortgages available, please contact us on 0121 775 0101.



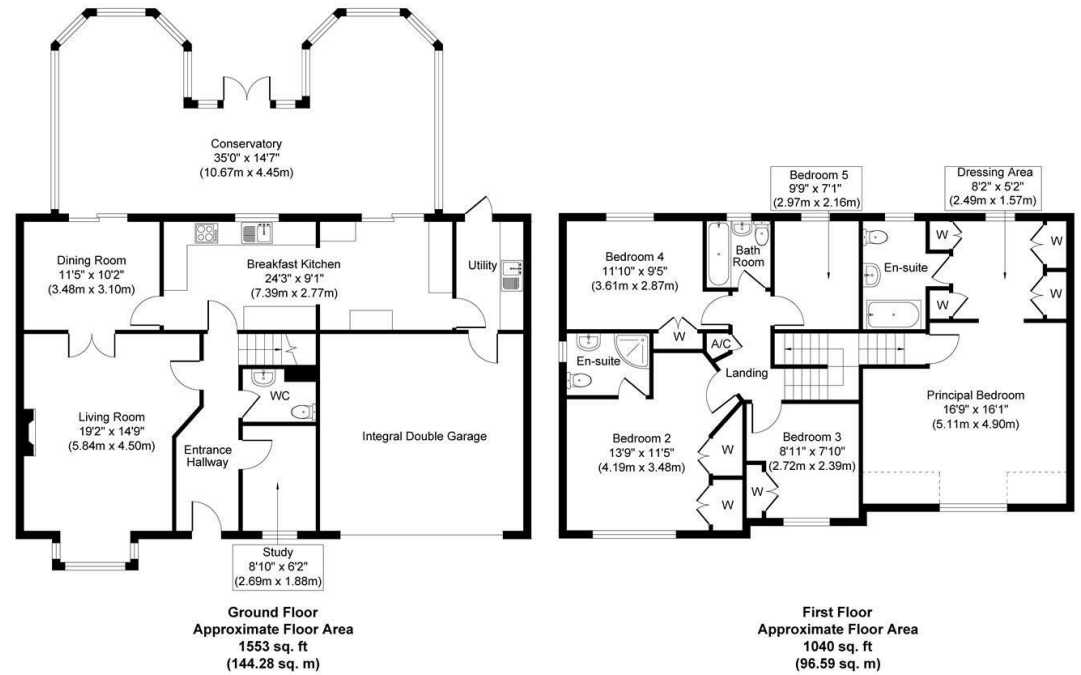
**Agents Note:** Whilst every care has been taken to prepare these sales particulars, they are for guidance purposes only. All measurements are approximate and are for general guidance purposes only and whilst every care has been taken to ensure their accuracy, they should not be relied upon and potential buyers are advised to recheck the measurements.

## FEATURES

- Five Bedroom Detached House
- Two Reception Rooms
- Fitted Breakfast Kitchen
- Large Conservatory with Underfloor Heating
- Two En-Suites and Family Bathroom
- Double Garage & Ample Parking
- Private South Facing Low Maintenance Rear Garden
- Walking Distance to Dorrige Village & Station
- Quiet Cul-de-Sac Location
- Arden Academy Catchment

## SIZE

Total - 2593.00 sq ft



Whilst every attempt has been made to ensure the accuracy of the floor plan contained here, measurements of doors, windows, rooms and any other items are approximate and no responsibility is taken for any error, omission, or mis-statement. The measurements should not be relied upon for valuation, transaction and/or funding purposes. This plan is for illustrative purposes only and should be used as such by any prospective purchaser or tenant. The services, systems and appliances shown have not been tested and no guarantee as to their operability or efficiency can be given.

Copyright V360 Ltd 2026 | www.houseviz.com

## VIEWING

Book a viewing with Sole Agents DM & Co. Homes by phone or email:

📞 01564 777 314

@ dorrige@dmandcohomes.co.uk

Agents Note: Whilst every care has been taken to prepare these sales particulars, they are for guidance purposes only. All measurements are approximate are for general guidance purposes only and whilst every care has been taken to ensure their accuracy, they should not be relied upon and potential buyers are advised to recheck the measurements.

