



Shaftesbury Avenue, W1D

£925,000

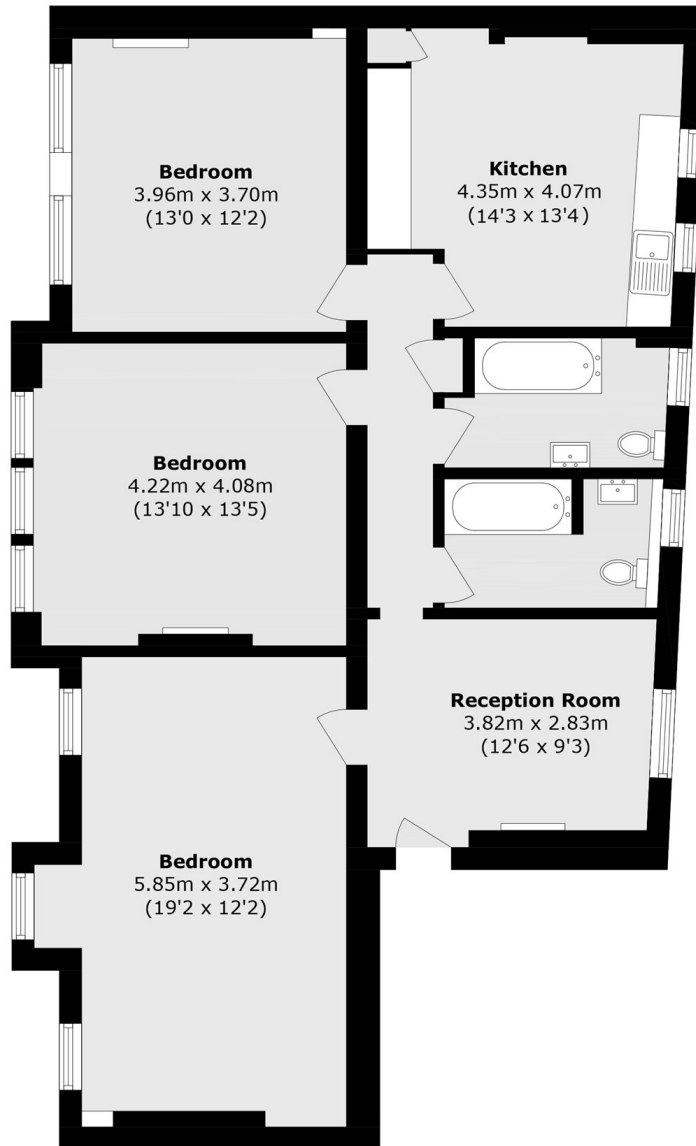
A three bedroom apartment on the top floor (with lift) of a red brick period building. Benefits a long lease, period features and a bright dual aspect with views of the central London skyline.

Located in London's Theatreland so walkable to amenities of the West End and Covent Garden. Local stations are Leicester Square & Piccadilly Circus.

Features

- Three Bedrooms
- Top Floor With Lift
- Reception
- Kitchen - Breakfast
- Two Bathrooms
- Lease To 2200

Shaftesbury Avenue, LONDON, W1D



Total area (approx.): 106.5 sq. m (1146.3 sq. ft)